

Over Subdivision Proposals

Planning Board Having Troubles With Commission

The Belleville Planning Board's recently completed 18-page land subdivision ordinance has run into some complications within the town political machinery. To the best of anyone's knowledge, no one even knows if the detailed law will be introduced by the board of commissioners.

The Belleville Times has learned, however, that if the 18-page law is brought before the commissioners, the ordinance will receive the minimum three votes needed to place the proposed law on the books.

Commissioner Robert Gruhin, in whose jurisdiction falls the building department which would be directly concerned with subdivisions, has met with the planning board on the ordinance.

Gruhin has expressed his belief that certain parts of the subdivision ordinance are inapplicable. He notes that Belleville is a developed town and maintains that the proposed ordinance would be more appropriate to a municipality still under development.

Although William Cullen, secretary of the planning board, told this newspaper that "we're not sure now" whether the ordinance should be introduced, it has been reliably said the planners are hopeful the subdivision law would be introduced within the next three or four weeks.

No commissioner is expected to comment on the subdivision ordinance at the town meeting next Tuesday night.

Both the commissioners and the planning board are waiting for the outcome of a December 1 meeting between the planners

(Continued on Page 6)

Chamber Elects Jackson Prexy For 1961 Term

Arthur Jackson has been elected president of the Belleville Chamber of Commerce for the 1961 year.

Others elected are Albin H. Ober, C. Robert Horsfield, William J. Orchard and Clayton Shepherd, vice-presidents; Frank Orechio, board chairman; Robert Williams, secretary; Michael Parisi, treasurer, and Harry T. French, executive director.

All terms are for the 1961 year. The elections were held during a luncheon meeting Monday at the Clara Maass Memorial Hospital.

Mr. Horsfield was chairman of the nominating committee. Jackson, who owns and manages Jolly Cleaners in Belleville, said he accepts the presidency "with a deep sense of gratitude and responsibility."

He noted that "the chamber now numbers among its ranks the giants of Belleville industrial, service, finance and business-retailing institutions."

The business affiliations of the officers are as follows: Mr. Ober, director of the Clara Maass Memorial Hospital; Mr. Horsfield, manager of the Belleville office of the New Jersey Bell Telephone Company; Mr. Orchard, consultant to Walter Kiddie Company; Mr. Shepherd, manager of the Royal Shop - Rite Market; Mr. Orechio, publisher of The Belleville Times - News; Mr. Williams, DeWitt Savings and Loan; Mr. Parisi, Parisi Furniture, and Mr. French, Owens and Company.

The chamber is now preparing its first "Bulletin" which will be distributed to members in the next few days.



Roger Joseph Plosa of Belleville, a student at Rollins College, Winter Park, Fla., has pledged the Sigma Nu social fraternity. He is the son of Mr. and Mrs. George Plosa of 18 Hornblower Avenue.

Lynn Carol Schneider of Belleville has been elected treasurer of the freshman class at Fairleigh Dickinson University's Rutherford campus.

Ralph Lehn, 58, and his daughter, Linda 17, of 93 Rossmore Place suffered multiple cuts and bruises last week when they were struck by an automobile which collided with another car in East Orange. They were treated and discharged by the East Orange General Hospital.

Lou Trabucco, Jerry Trabucco and Harry Lennon, all cousins, have ventured into the service

(Continued on Page 6)

Valley Group To Hear Talk For Manager

The council-manager type of municipal government will be debated at next Monday's monthly meeting of the Belleville Valley Association. The session will hear Salvatore R. Calabro starting at 7:30 p.m. in the Second Baptist Church, 108 Stephens Street.

Calabro is president of the Belleville Citizens' Tax Council, a group which has been advocating a change from the commission to the council-manager type of government in town.

His appearance is part of the valley association's program to study and present aspects of the different government types being advanced for Belleville.

A question and answer period will be provided.

About Missing Manual

Special Committee Meets On Purchasing Ordinance

Town Attorney Thomas D. Avella is still reviewing the 1954 ordinance creating the Belleville purchasing agent's office for non-conformities which would nullify the six-year-old law as has been charged by Commissioner George Kiernan.

Kiernan said last week that his Parks and Public Property Department will by-pass the town purchasing agent's office by making its own department purchases and contracts. He bases his charge on the fact that the 1954 ordinance calls for a "manual" of operations; such a manual is non-existent.

'Diabetes Week' Opens Detection Centers in Area

Belleville's executive health officer is urging all adult residents to participate in the Diabetes Detection Drive which is underway in Essex County.

Edward G. Burdzy told The Belleville Times that "we have many persons right here in Belleville who have diabetes and don't know it."

He explained that estimates are that one out of every 100 persons is suffering from undetected diabetes. Burdzy reported that testing equipment will be located in the East Orange office of a savings and loan association, 606 Central Avenue is open today between 10 a.m. and 3 p.m. and again tonight from 6 to 8 o'clock. Tomorrow the center will be open between 6 and 8 p.m.

The co-sponsors of the testing program, the Essex County Medical Society, the N. J. Diabetes Association, the State Department of Health, and the State Department of Social Services.

(Continued on Page 6)

Lions Club Minstrel This Saturday Night

The Belleville Lions Club is all set for its minstrel and variety show set for Saturday night in the high school auditorium. Harry Ziegler, ticket chairman, says that the club hopes to fill the auditorium to capacity for the performance.

He noted that the Lions is the world's largest service organization and that Saturday's program will provide funds to benefit many Belleville projects.

(Continued on Page 6)

United Fund's Residential Drive Extended Additional Three Weeks

Beatniks Bark of Belleville Victory



Beatniks marched around the Kearny High School field during the half-time ceremonies at Saturday's football meeting. Belleville was the

victor. The crazy costumes were donned by the Belleville twirlers who show the Times photographer just what it takes to be real cool. Left to right

these femmes are Jane Wittek, Judy Tremel, Elaine Lanfrank, Nancy Steffensen, Dolores Ruglio and Arleen Mohler. The twirlers are working

on "Around the World" program for the Thanksgiving game at Orange. Details of the football game appear on page seven.

Past Week's Results Have Been Better

Extension of the United Fund house-to-house campaign for an additional three weeks and to run to December 5 was announced today by John W. Noonan, United Fund president.

The decision to extend the residential campaign was made by the board of trustees of the United Fund at its last meeting when Dominic Lally, chairman of the house-to-house contribution drive, made an intermediate report.

"From Mr. Lally's report it became quite evident that the house-to-house campaign has gained a new impetus during the past ten days or two weeks," Noonan stated.

"It is too early to predict whether the house-to-house canvas in behalf of the 12 indigenous social and medical welfare agencies affiliated with the United Fund of Belleville will meet its goal in full. But the renewed interest of householders and property owners in the worthy causes of the United Fund justifies the expectations of the trustees that an extension of the campaign is highly desirable."

Noonan quoted the residential campaign chairman Lally as telling the trustees, "the preoccupation of a great number of our citizens with the vital issues of the presidential election campaign was undoubtedly one of the main reasons for the slow-down that was experienced in the residential campaign. However, with the elections now out of the way, the Thanksgiving season is almost upon us, — a season in which traditionally we not only give thanks for our own blessings, but in which we also remember the plights and needs of those less fortunate than ourselves. There is every reason to expect that the house-to-house campaign will realize at least a major portion of the goal set for it."

Lally continued the summing up: "The increase in the number and amounts of contributions received by our house-to-house volunteer workers during the past two weeks is a clear indication that the citizens of our town are beginning to realize to an ever fuller extent how necessary the support of the United Fund of Belleville and its affiliated agencies is for each and every one of us."

"If any of these 12 agencies were forced to cease operating because of lack of funds, its function in caring for the aged, sick and needy simply would have to be assumed either by the State or the municipality. That means that the cost of such functions would have to be raised in taxes instead of voluntary contributions, as is now the case."

"I am confident that despite the slow beginning of our house-to-house campaign, the United Fund will eventually be able to meet the budgetary commitments of the 12 participating agencies."

Rutan Group Is Still Conducting 'Bridge' Survey

The Rutan Estates Homeowners' Association has made little progress, if any, in its survey to determine neighborhood opinion regarding a bridge across the Third River at Carolyn Road. John Bass, president of the association, promised the commissioners nearly a month ago that his group would make a survey to "find out whether a traffic or a pedestrian bridge" is most desired by residents of the Carolyn Road area.

The bridge has been a favorite debating topic in recent weeks of the Rutan group whose most frequent spokesmen are Bass and attorney Nicholas Brescia.

The Rutan Association wants Commissioner Robert Gruhin to demand the developers of the housing project to erect the bridge.

Gruhin told this newspaper Tuesday morning that he has been looking into contracts and records "and so far I haven't

(Continued on Page 6)

At Cost of \$2,400 Town Sends 18 Delegates To Atlantic City Convention

If the Belleville Town Hall appears somewhat deserted this week, it's because 18 administrators including the five commissioners are attending the annual convention of the New Jersey League of Municipalities in Atlantic City.

Formal activity got underway in the convention city yesterday after registration Tuesday afternoon. Vouchers totaling \$2,450 to finance the delegates' attendance at the gathering have already been approved.

Attending are Mayor Isadore

Padula, Commissioners George Kiernan, Robert Gruhin, Nuncio Pico and Harry Sullivan.

Also William J. Frieo, tax collector; Emanuel DeNoia, tax assessor; Eugene G. Barnett, town clerk; Francis H. McCoy, town treasurer; Thomas J. McLaughlin, purchasing agent; Ralph Rioli, secretary to the public affairs director; Salvatore Sprella, coordinator; Edward Burdzy, sanitarian; Thomas D. D'Avella, town attorney; Hugh Welsh, administrative clerk; Raymond Daly, engineer; S. John Coronato, zoning board chairman, and Edward Lister, recreation coordinator.

Many of the Belleville representatives will act in official capacities at the convention. Padula with Newark Mayor Leo Carlin will represent Essex County on the convention's legislative committee.

CD Units Active For Town Parade

Units of the civil defense auxiliary police and radio CD communications groups were activated during the Veteran's Day parade Friday evening. Auxiliary police turned out in force under the supervision of Capt. Walter Weiss and Deputy Chief Norbert Bertl; they were stationed along the line of march from Greylock Parkway and Washington Avenue to the Town Hall.

The radio group went into action from CD headquarters and maintained constant communication with mobile units in the parade and at the reviewing stand. Norman Thompson, W2JYW, assisted by junior operator Keith, were in the van of the parade and relayed messages from the marshalling area to CD headquarters and to the reviewing stand where another mobile operated by Charles Mantone, WA-2DCZ, and Jerry Stauhs relayed information as to the progress of the parade.

(Continued on Page 6)

Deadlines Friday For Next Issue

Due to the Thanksgiving holiday next week, The Belleville Times will print its next edition early.

Deadlines for the holiday issue are as follows: Classified advertising, 10 a.m. Friday. All other items, 12 noon Friday.

The holiday issue will be in the mails and on the newsstands next Tuesday morning.

Harvest Festival Ready For This Saturday

"Harvest Festival and Smorgasbord" is set for this Saturday afternoon and evening at the Masonic Temple, 126 Joramemon Street.

Sponsored by Arem Chapter, Order of Eastern Star, the supper will be served between 5 and 7 p.m.

Booths offering "eye-catching and taste-tempting" articles will be featured.

DECEMBER DEADLINE

December 1 is the date the yearly subscription price of The Belleville Times goes up—from \$2.00 to \$3.00. Save money by renewing your subscription — or starting a new subscription, before December 1.

Arlene Rossi, Joe Cernero Are Contest Winners

The popular map page contest in The Belleville Times this week has two winners, both are Belleville High students, both are members of the senior class and both are "going steady" — and with each other.

Joe Cernero of 94 Emmet Street, who lists among its activities the post of co-captain of the BHS football team, was the first person to correctly identify Arlene Rossi as the circled personality in last week's map page picture.

Arlene is the daughter of Mr. and Mrs. John Rossi of 15 Perry Street. Joe was correct in naming the Belleville Municipal Stadium as the place the photograph was snapped.

Joe had a couple of advantages which account for his winning the \$10 award. First of all he knew Arlene Rossi quite well; they have been going steady for about two years. Second, he knows the Belleville Municipal Stadium very well; he seems to find his way on the playing field anyway, even when conditions appear congested.

Finally, Joe had the advantage of an early copy of The Belleville Times, which one of his teammates picked up on a newsstand in the morning and

(Continued on Page 6)

Will Investigate Town

New Health Study Group Starts Probe Last Night

The newly organized citizen's health committee met last night with state health officials in Belleville Town Hall as the group's first step in surveying the health needs of the municipality.

Dr. Melvin Freundlich of 1 Louise Court, chairman of the committee, and Nicholas Brescia, secretary, report that the group should complete its work by January 9.

Last night Arthur W. Price, principal district sanitarian, and Mrs. Bertell Wright, state district community consultant, met with the Belleville Citizens Health Committee.

Price told The Belleville Times that the state health office will cooperate with the town committee "but we're not going to tell them what to do; we are here only for information and guidance."

Basically, the Belleville com-

mittee's purpose is of a fact-finding nature. The committee is to complete a 25-page form which will be forwarded to state officials in connection with new minimum state health standards which will be enforced starting next April 1.

Mr. Price said that once the committee has completed the forms and reports, any areas where Belleville falls short of the new state standards will become evident.

Commissioner Nuncio Pico, director of the public affairs department, said he will discuss Belleville's health problems with other directors and state officials at this week's Atlantic City convention of the New Jersey League of Municipalities.

Mr. Price noted that "it's expected all communities will comply with the new standards by April 1."

'Holiday Fair' Friday and Saturday



"Holiday Fair" opens tomorrow and continues through Saturday at the Montgomery Presbyterian Church, 638 Mill Street. The five ladies shown here are readying the many items which will be placed on sale, articles such as home and

Christmas decorations, dolls, stuffed toys, plants, baked goods, jellies, handkerchiefs, surprise packages and more. The fair will be held in the church's educational building on both days from 10 a.m. to 9 p.m. Left to right above are

Mrs. Donald Bowden, co-chairman; Mrs. Daisy Chown; Mrs. Paul Lewis, president; Mrs. James DeJonge, chairman, and Mrs. Clayton Dahlin.

(Kondreck Photo)

Rec. Bulletin Board

THURSDAY
9:15 a.m. — Preschool Play Program—Recreation House.
1:00 p.m.—Housewives Bowling League—Olympic Lanes.
3:30 p.m. — Junior Barbell Club—Stadium.
7:00 p.m.—Senior Barbell Club—Stadium.

FRIDAY
9:15 a.m.—Preschool Play Program—Recreation House.
3:30 p.m.—Junior Barbell Club—Stadium.
7:00 p.m.—Senior Barbell Club—Stadium.

SATURDAY
9:00 a.m.—Recreation — Kiwanis Jr. Bowling Clinic—Branch Brook Lanes.
9:00 a.m.—Recreation — Kiwanis Jr. Bowling Clinic—Olympic Bowl.
12:00 noon — Recreation — Kiwanis Jr. Bowling Leagues —Branch Brook Lanes.
12:00 noon — Recreation — Kiwanis Jr. Bowling Leagues —Olympic Bowl.
3:00 p.m. — Recreation Kiwanis Jr. Bowling League—Branch Brook Lanes.

MONDAY
9:15 a.m.—Preschool Play Program—Recreation House.
1:00 p.m. — Sewing Group—Recreation House.
3:30 p.m.—Junior Barbell Club—Stadium.
7:00 p.m.—Senior Barbell Club—Stadium.
8:00 p.m. — Chess Club—Recreation House.

TUESDAY
9:15 a.m.—Preschool Play Program—Recreation House.
3:30 p.m.—Junior Barbell Club—Stadium.
7:00 p.m.—Senior Barbell Club—Stadium.
8:00 p.m. — Draggin Dragons —Recreation House.

WEDNESDAY
9:15 a.m.—Preschool Play Program—Recreation House.
3:30 p.m.—Junior Barbell Club—Stadium.
7:00 p.m.—Senior Barbell Club—Stadium.
9:00 p.m. — Woman's Bowling League — Branch Brook Lanes.

VACATIONS IN SOUTH

Among the guests who arrived in Pinehurst, N. C., "Golftown, USA," last week was Walter Adams, of 34 Rossmore Place. Mr. Adams is a guest at The Carolina and will remain in Pinehurst for a ten-day stay.

Complete Heating Systems For All Your Heating Needs Call

PLYMOUTH 9-1907
46 Eugene Pl. Belleville

OUR FUEL OIL MAKES WARM FRIENDS

Now new low cost installation prices.
Low cost service contract including parts coverage
Convenient monthly budget plan.
24 hour emergency service.

HILLTOP RIVIERA OIL CO., INC.

Lumber

FREE DELIVERY
Open Saturday to 5 P.M.

BELLEVILLE Building Materials Corp.

Easy To Reach and Park

LUMBER

• ROCKLATH • PLYWOOD
• SHEET ROCK • CEILING
• TILE • KNOTTY PINE
• MASONITE • SHELVING
• SHINGLES
• FLOORING • CEDAR
• LINING • MOLDING • INSULATION • DOORS

Sand Cement

PLYmouth 9-5818

325 Jorammon St. Belleville
Open 2-4 Mon. thru Sat.

Belleville Travel Service, Airline In Holiday Offer

For the Christmas season Air France and The Belleville Travel Service, 246 Washington Avenue, offer a 17-day excursion vacation of the Holy Land for \$996, including transportation, hotels, sightseeing and evening entertainment. Vacationers will travel to Cairo, Beirut, Damascus, Jerusalem, Tel Aviv and Paris, as well as several holy cities near these main points. Reservations and information may be obtained either in person or by calling the Belleville office at PLYmouth 1-2727.

The trip starts with boarding an Air France Boeing 707 Jet in New York for a six hours and 45 minutes trip to Paris followed by a connection to Cairo arriving on the second day. In the Egyptian capital will be sightseeing of the Citadel, mosques and bazaars. Another tour includes the Pyramids and the Sphinx. A nighttime cruise on the Nile around the city will be followed by the departure from Egypt to Beirut on the fifth day.

The fifth through the seventh days will include sightseeing around Beirut and a full day tour of Baalbek and Damascus. On the eighth day you move to Old Jerusalem and a visit to the Christian shrines. Other visits include the Temple Area, the Mount of Olives, Bethlehem, Jericho and the Dead Sea. New Jerusalem sightseeing includes Mount Zion and David's Tomb. The 13th day will be a full day drive into lower Galilee visiting Tiberias, Capernaum, the Sea of Galilee. The return will be made via Nazareth and the night spent in Haifa.

The 14th day will start with sightseeing in Haifa including Mount Carmel. The tour continues to Tel Aviv for sightseeing in modern Tel Aviv and the streets of ancient Haifa. The 16th day will be spent in Paris with evening entertainment and refreshments at "La Nouvelle Eve." On the 17th day the traveler boards an Air France Jet for the return to New York arriving at Idlewild Airport the same day.

Shop Rite Chain Opens Two New Stores in N.J.

Irving Sedwin, general manager of Shop-Rite Super Markets of New Jersey, New York and Delaware, today announced that the Shop-Rite chain opened another market in Cranford, yesterday.

The new unit, composed of 7,000 square feet of selling space, is owned and operated by Lou Cooperstein. The unit offers a completely modern atmosphere along with many service departments including fish, bakery, deli and both service and self-service meats.

West End Rutherford Shop-Rite, located at 310-314 Union Avenue in Rutherford, also officially re-opens this week, tomorrow. The unit has been completely remodeled and is greatly expanded in size to meet the increasing demand for wider selections and speedier check-out service. It is owned and operated by Thomas, Charles and Paul Clare.

Shop-Rite Super Markets is the only independently owned chain in New Jersey with food stores in three states, and is the largest of its kind in this state. Grand opening ceremonies for both units will continue four weeks.

Harry Carlsson Ends Training

Marine Pvt. Harry E. Carlsson, Jr. son of Mr. and Mrs. Beno Seidler of 47 Center Street, completed recruit training September 22 at the Marine Corps Recruit Depot, Parris Island, S. C.

Relatives and friends of many of the new Marines were on hand to witness the graduation ceremonies.

The 12-week training schedule included drill, bayonet training, physical conditioning, parades and ceremonies, and other military subjects.

Three weeks were spent on the rifle range where the recruits fired the M-1 rifle and received instruction in basic Marine infantry weapons.

This recruit training prepares young Leathernecks for further specialized infantry training at Camp Lejeune, N. C.

DETROIT



3 min station rate from Newark after 6 PM. 10% tax not included.

The Stork Club

Frederick H. Smith, Jr.

A second child, a son, Frederick H., Jr., was born September 13 at St. Vincent's Hospital, Montclair, to Mr. and Mrs. Frederick Smith, of 685 Passaic Avenue. The seven pound, 11 ounce lad has a sister, Cynthia, two and a half. Mrs. Smith was formerly Miss Marjory Davis, daughter of Mr. and Mrs. Edward T. Davis, of 38 Washington Avenue. Mr. Smith is an electrical engineer with Federal Telephone and Radio Corp., Nutley.

James Werdann

A fourth child, a son, James, weighing eight pounds, one ounce, was born to Mr. and Mrs. John Werdann, of 145 Garden Avenue, September 30 in Clara Maass Memorial Hospital. He has two sisters, Sheri, four, and Kathy, three, and a one-year-old brother, John. Mrs. Werdann was Miss Barbara Mildon, daughter of Mr. and Mrs. A. H. Mildon of Bloomfield. Mr. Werdann is a wire weaver with Eastwood-Nealley Company.

John Keith Tiene

Mr. and Mrs. Guy Tiene, of 34 Sycamore Drive, announce the birth of their fifth child, a son, John Keith. The six pound, three ounce youngster arrived at St. Mary's Hospital, Passaic, October 1. He joins a sister, Margaret, nine, and three brothers, Michael, eight; Francis, seven, and David, five. Mrs. Tiene is the former Miss Mary Sheldon, daughter of Mrs. M. P. Sheldon, of Gloucester, England. Mr. Tiene is with the Nutley Board of Education.

Joseph Charles Sinnott

Congratulations are being sent to Mr. and Mrs. Joseph Sinnott, of 46 Jorammon Street, on the birth of their third child, a son, Joseph Charles, October 3 at Clara Maass Memorial Hospital. His sisters are Laura Ann, four, and Mary Louise, one and half. Mrs. Sinnott was formerly Miss Mary Jacobus, daughter of Mrs. Charles Jacobus of Newark. The proud father is with Potomac Chevrolet Company, Newark.

Richard Thomas Hangge

Mr. and Mrs. Richard T. Hangge, of 201 Linden Avenue, are receiving congratulations on the birth of their first child, a son, Richard Thomas, October 4 at United Hospitals of Newark. Mrs. Hangge was Miss Maureen Sayre, daughter of Mr. and Mrs. Theodore Hoffman, of 30 Linden Avenue. The paternal grandparents are Mr. and Mrs. Thomas R. Hangge, of 156 Nolton Street. The younger Mr. Hangge is with Thirst-Aid Company, Montclair.

John Anthony Erickson

Mr. and Mrs. Harold J. Erickson, of 18 Bellevue Avenue, announce the birth of their second son, John Anthony, October 6 in Beth Israel Hospital, Newark. He weighed in at eight pounds, 14 ounces and joins a brother, Thomas Joseph, 16 months. Mrs. Erickson is the former Miss Marilyn Dopart, daughter of Mrs. Helen Dopart, of the Bellevue Avenue address, and the late Mr. Dopart. Mrs. Dorothy Erickson of Clifton and Harold Erickson of Bloomfield are the paternal grandparents. Mr. Erickson is presently serving in the U. S. Navy aboard the U.S.S. Joseph P. Kennedy, Jr.

Valerie Jane Forte

A second child, a daughter, Valerie Jane, arrived October 6 in St. Michael's Hospital, Newark, to Mr. and Mrs. Frank M. Forte, of 22 Petry Drive, East Hanover. Her brother, Frank, is two. Mrs. Forte was formerly Miss Judith Sposato, daughter of Mr. and Mrs. Salvatore Sposato of Nutley. Mr. and Mrs. Frank P. Forte of Nutley, formerly of Belleville, are the paternal grandparents. The new dad is a mechanical engineer at Picatinny Arsenal, Dover.

Wayne Louis Wittman

Mr. and Mrs. Louis Wittman, of 32 Elena Place, announce the birth of their third child, a son, Wayne Louis, October 8 at Clara Maass Memorial Hospital. The eight pound, nine ounce baby joins a brother, Kenneth, 16, and a sister, Barbara, 13. Mrs. Wittman is the former Miss Arlene Lothes, daughter of Mr. and Mrs. Alfred Lothes, of 29 Perry Street. Mr. Wittman is with Sheridan-Ford, Kearny.

Gary Jerome Sorrentino

A first baby, a son, Gary Jerome, was born to Mr. and Mrs. Jerome Sorrentino, of 254 Jorammon Street, October 11 at Clara Maass Memorial Hospital. He weighed six pounds, two ounces at birth. Mrs. Sorrentino was Miss Gilda Grillo, daughter of Mrs. Elizabeth Grillo of Long Branch. The new dad is with Erie Cloak Company, Passaic.

Three Join RCA's 25-Year-Club in Town

Three Belleville residents employed by the RCA Electron tube plants in Harrison have been inducted into the firm's 25-year-club.

They are Michael J. Hegarty of 47 Rossmore Place, Adolph F. Lechleiter of 71 May Street and Joseph Smith of 32 DeWitt Avenue.

The trio joined the club November 9 as honored guests at a dinner in the Hotel Essex House. Currently the group has a membership of 580 including 483 active employees and 97 who are retired.

Louis Crudele Now at Fort Dix

Louis Edward Crudele, Jr., 20, has arrived at Fort Dix and has been assigned to company E of the Second Training Regiment of the U. S. Army Training Center, Infantry for eight weeks of basic training.

His parents, Mr. and Mrs. Louis Crudele live at 239 Roseville Avenue, Newark. Prior to entering the Army, Private Crudele graduated Belleville High School.

He was formerly employed by Prudential Insurance Co., Washington Street, Newark.

During his training he will receive instruction in general military subjects, as well as character guidance programs under the post chaplain.

After the initial eight weeks, Pvt. Crudele will be given a two-week leave and receive eight more weeks of Advanced individual training; he enrolled in one of the specialist schools here, or be transferred to another Army post for training in one of the Army's technical schools.

Ronald Bertino With SAC Unit

Airman Ronald Bertino, son of Mr. and Mrs. Casper Bertino of 56 Forest Street, Belleville, has been assigned to a unit of the Strategic Air Command.

Airman Bertino has reported to a operational unit at Schilling AFB, Kansas for further training as a supply specialist. He recently completed the first phase of his basic training at Lakeland AFB, Texas.

Airman Bertino attended Belleville High School where he received a sound education which enabled him to qualify for On-The-Job Training as a Supply specialist.

He was selected for this type training on the basis of his interests, aptitude and the needs of the U. S. Aerospace Force.

A wife is a leash on life.
—The Chicago Tribune.

J. Edgar Hoover, F.B.I. Director:

"Crime has been rising four times as fast as population."

CAPITOL CAB CO.

19 Davidson St.
Belleville

PL 9-3900

6 A.M. to 12 P.M.

CLOSE OUTS - 1960 PATTERNS
5,000 ROLLS
WALLPAPER
49c Per Roll

Belleville Paint & Wallpaper Co.

100 Washington Ave. PL 9-2802 Belleville, N. J.

Remember The Name

Belleville - Nutley
Tuberculosis Association

your CHRISTMAS seal
purchases PAID for

2985



FREE PATCH TESTS
For School Children
Of Our Two Towns

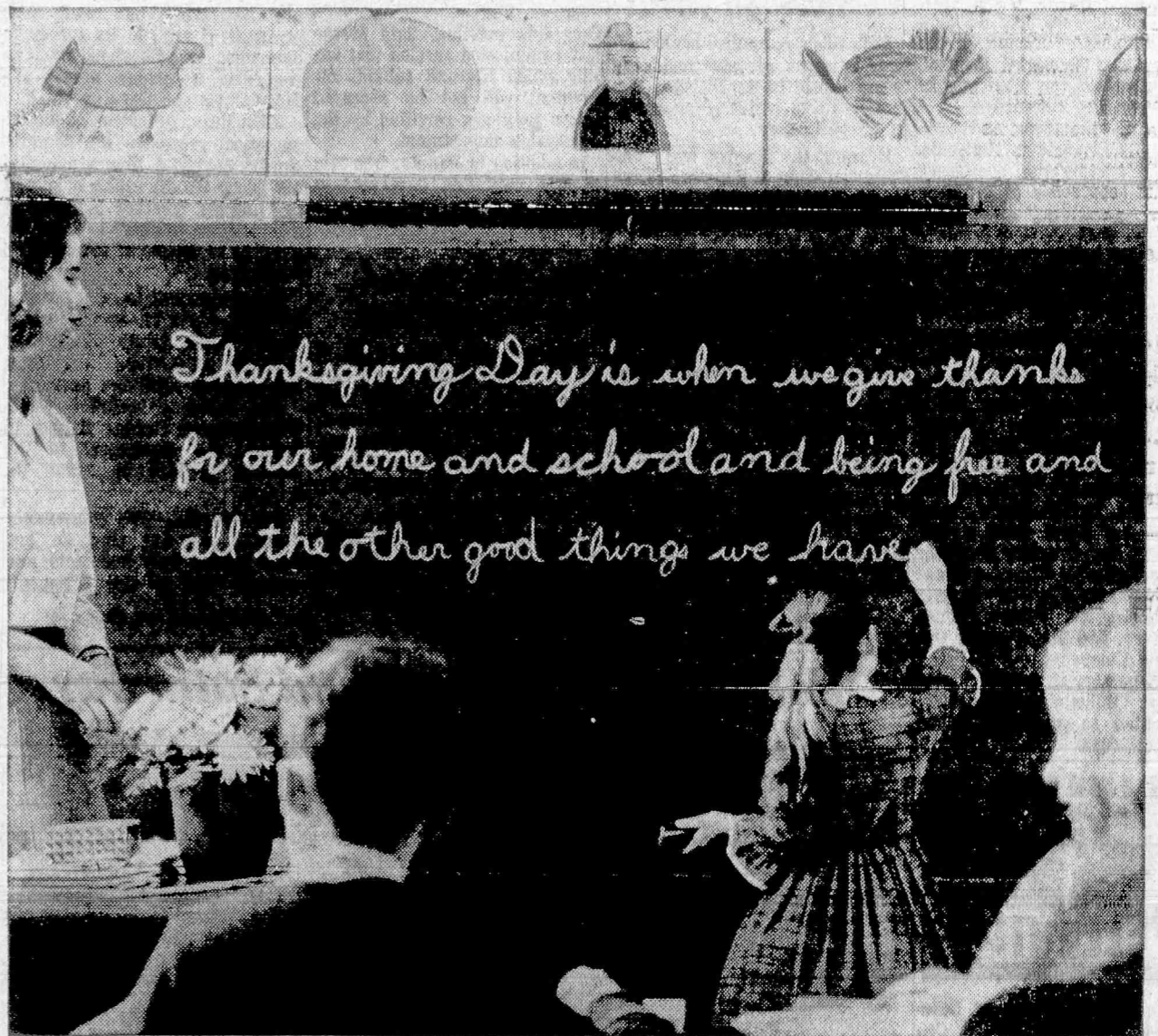


Rick Ridgers . . . Yes, of course
I remember you! You're a
Princeton man, own an Austin-
Healy and wear clothes . . .

A & D CLEANERS

(opp. Royal Shop Rite)

172 WASHINGTON AVE., BELLEVILLE
ALTERATIONS & REPAIRS



... and let us also give thanks for the preservation of the peace ... for the prosperity of our great nation ... and for the challenge of the unlimited opportunities which lie ahead.

DeWitt Savings & Loan Association

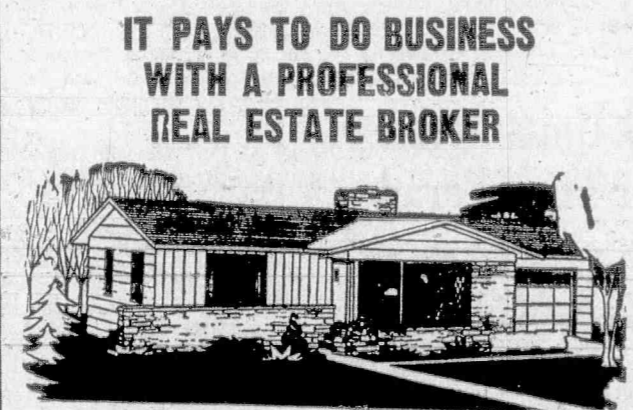
463 WASHINGTON AVE.

BELLEVILLE, N. J.

Daily 9 to 4. Also Monday Evenings 6:30 to 8:00

PLYmouth 9-5261

MEMBER OF THE SAVINGS AND LOAN FOUNDATION, INC. SPONSOR OF THIS ADVERTISEMENT IN LOOK AND SATURDAY EVENING POST



IT PAYS TO DO BUSINESS
WITH A PROFESSIONAL
REAL ESTATE BROKER

Consult A Realtor to Buy Or Sell

Over 200 Photo Multiple Listed Homes —

William Abramson
500 Washington Ave.
PL 9-0500

Harland D. Box
618 Washington Ave.
PL 9-2133

George B. Pifer
398 Washington Ave.
PL 9-0300

James J. Tully
383 Washington Ave.
PL 9-1155

N. H. Thompson, M.A.I.
302 Washington Ave.
PL 9-2712

Jacobs Realty Co., Inc.
184 Washington Ave.
PL 9-3050 — PL 9-4800

GO

THE
FASTEST
WAY TO

THE CENTER OF N.Y.
DIRECT — NO CHANGES

De CAMP BUS
LINES

For Timetable Information . . . Gregory 1-2300 . . . Clifton, N.J.

Does Charity Start At Home?

Last week we reported in the editorial columns of this newspaper the status of Belleville's United Fund collections in relationship to its goal and compared these statistics with similar statistics of 15 other United Fund drives being held simultaneously with ours.

At that time Belleville stood at the bottom of the list in terms of its United Fund collections. At this writing, we are in a photo-finish for a tie in 15th place. While the change is ever so slight, we are happy to report the improvement. This change in itself will not insure the collection of funds necessary for the 12 participating organizations in Belleville's United Fund to accommodate the needs and requirements of less fortunate local citizens.

In a few days we shall be celebrating Thanksgiving. In the spirit of this holiday, perhaps we may want to remember, more generously, those in need. This is the time to give thanks to God because we do not require the aid and assistance of the 12 organizations participating in the United Fund.

Those among us who are helped by the United Fund's participating agencies need our help. Our contributions to the United Fund will give them reason to be thankful this Thanksgiving Day. We urge all to give till it helps. By giving to our United Fund, you may be helping a neighbor.

A Peerless Leader

Last week's election results here should convince every Belleville Democrat that Ralph Vara, local Democrat County Committee leader, is without a peer in this area.

That the Democratic ticket scored an unprecedented victory locally was primarily due to the presence of Senator John Fitzgerald Kennedy's name at the head of the ticket, no one doubts. But, significantly, while U. S. Senator Clifford P. Case, Republican candidate for re-election, was sweeping practically every suburb in Essex, the local organization, under the direction of Ralph Vara, was able to turn back Case's re-election bid in Belleville.

There are Democrats in our community who will conveniently find a number of reasons to justify the party's local victory, without giving due credit to the vigorous efforts of the local Democrat County Committee members working under the direction of its chairman, Ralph Vara.

Any leader worthy of the title has his detractors. Mr. Vara is no exception to the rule. However, we still believe a majority of Democrats in Belleville will want to remember last week's election results when next year's Primary Election is upon us.

G.O.P. — Where To Now?

Republicans in Essex County looking for a scapegoat as the result of Senator John Fitzgerald Kennedy's overwhelming win in Essex County, will look scornfully in the direction of Robert W. Kean, Essex G.O.P. Chairman, and wonder why this distinguished public servant doesn't resign from leadership of the Republican Party in Essex.

It is our judgment that Bob Kean did the very best he could — the very best he knew how — under most difficult circumstances, after having inherited a decrepit organization that was on its last legs.

The defeat of the entire Republican ticket in Essex County, with the sole exception of Representative George Wallhauser, candidate for re-election in the 12th Congressional District, should give the G.O.P. cause for concern.

That it is time for a revitalization of the party from stem to stern, there is no doubt. If the Republican Party is to survive as an important force in future Essex County elections, it must reorganize — and quickly.

The Republican Party has been burdened for many years with leaders whose prime interest was to remain on the public payroll. In order to perpetuate themselves in office they adopted a policy of exclusion. We have seen times when Republican leaders deliberately made it difficult for Republicans to remain Republicans.

This policy might have been all right in the days when the Essex County Republican machine was able to muster a 50,000-vote majority at the drop of a hat. As modern-day Republicans well know, the days of automatic Republican majorities in Essex County have long since passed into history.

Recent records clearly indicate that Essex is becoming a "swing" county. The Essex electorate is becoming more discerning. The voters no longer will be satisfied with the stereotype pitches of days long since gone. Republicans in Essex County can no longer live on their past reputation. In the dynamic sixties they must move forward with new faces and new programs.

Next year's election will be a crucial one. The entire Assembly delegation is to be elected, as well as a new Governor to replace two-term Governor Robert B. Meyner. The Republicans can win next year but they must present a slate of brand-new candidates, rather than nominate "shop-worn" defeated candidates of the past.

A peculiarity of the Republican Party in this area is the ever-present effort of defeated G.O.P. candidates to seek re-nomination by the ruling party clique. Of late this strategy has not succeeded.

Republicans interested in the welfare of their party should take a more active interest in the selection of precinct workers who will dedicate themselves to a much-needed revitalization of the party at the local level. And the oldtimers, who have served the party so well for so many years, should be among the first to welcome new workers to the party.

Women To Hear Funny Lecture



KENNETH HAYNES

Kenneth Haynes, lecturer, playwright and general manager for the Eagle-Courier newspapers, will be the speaker at the annual men's night of the Women's Club Monday at 8:15 p.m. in the clubhouse, 51 Rossmore Place. Haynes will offer his "Comic Interlude," a humorous lecture set against a background of timely information.

Preceding the entertainment, a buffet supper will be served at 6 p.m. Chairman for the supper is the club's second vice president, Mrs. Gerard Ferrara.

Theresa Glennon, 73

Miss Theresa G. Glennon of Newark died November 6 in her home of a lengthy illness. She was 73.

Born in Belleville, Miss Glennon lived most of her life in Newark. Her home was at 184 Broadway.

Miss Glennon was employed 41 years by the New Jersey Bell Telephone Company and retired in 1946. She was a member of the local chapter of the Telephone Pioneers of America.

Surviving is a brother, Christopher, of Belleville.



Fri. Thru Tues., Nov. 22nd
Bing Crosby Tuesday
Fabian Weld

"HIGHTIME"
— ALSO —
The Sensational 665-Day Pursuit of the Killer-ship Atlantis!
Van Heflin Charles Laughton
'UNDER TEN FLAGS'

FREE! 12 TURKEYS-12
Awarded Tues. Eve, Nov. 22nd at 8:40 P.M.

Sat. Mat. Kiddie Show
"The Pagans"
"Under Sea Girl"
Plus
Color Cartoons

Local Women Attend Women's League Conclave

Mrs. George Sosin and Mrs. Henry Denner have just returned from the Concord Hotel, Kiamisha Lake, N. Y., where they represented the Sisterhood of Congregation Ahavath Achim, of Belleville at the biennial convention of the National Women's League of the United Synagogue of America.

Mrs. Sosin is the immediate past president of the local Sisterhood and at present is chairman of the Sisterhood board, and a member of the Congregation board of trustees. Mrs. Denner is a Sisterhood board trustee and the Women's League social action chairman.

TAKE THE FAMILY OUT FOR

Thanksgiving Dinner



We Are Featuring

A Special, Complete Dinner
Thanksgiving Day

With A Choice
Of Six Entrees

3.75

Children's Portion - Choice of 6 Entrees — 2.00

Please Make Your Reservations Early
Call North 7-8338 - North 7-7908 or North 7-9770

The New
NUTLEY MANOR
Restaurant and Cocktail Lounge

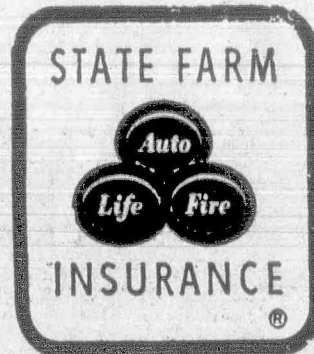
116 HARRISON ST.

NUTLEY, N. J.

SAVE \$100
\$200
\$300

on car financing and insurance with

Have you seen this billboard?
It's a reminder of the State Farm Bank Plan that saves you time and money on your purchase of a car.
Here's how: your neighborhood State Farm agent arranges financing for the car at low bank rates. You avoid hidden costs and high interest rates of many financing "package deals."
You buy your car with a check received through your agent. The car is yours! Then, he provides you with State Farm auto insurance at low rates—made possible by our aim to insure careful drivers only. If you qualify, you may save up to \$300 on your next car with low-cost Bank Plan financing and insurance—through State Farm.
Ask today how much you can save.



William L. Perrelli
406 Franklin Ave.
Belleville

• telephone
PL. 9-9292

STATE FARM MUTUAL AUTOMOBILE INSURANCE COMPANY • HOME OFFICE: BLOOMINGTON, ILLINOIS

The Belleville Times

ADVERTISING, NEWS AND BUSINESS
OFFICE

246 WASHINGTON AVENUE
BELLEVILLE, NEW JERSEY

Published by the Belleville News Corp.

Frank A. Orechio, Publisher

Carmen A. Orechio Associate Publisher

Some Workers Not Receiving Security Benefits

Some household workers are not receiving social security credit for their earnings, according to Joseph F. J. Mayer, District Director of Internal Revenue, and William J. Wilkie, District Manager of the Social Security Administration, both of Newark.

The law makes employers responsible for reporting for social security purposes the case wages they pay to workers in their household, said Mr. Wilkie. Household workers who receive \$50 or more in cash wages during a calendar quarter have earned social security credits for that period. This might be as little work as \$4 per week. These workers should make sure that their employers report their wages because social security credits are based on these reports.

The law requires the employer to report the case wages paid to household workers to the Dis-

trict Director of Internal Revenue, together with the social security tax due on these wages. The report must show the name, social security account number of the worker and the amount of the wages paid.

The next quarterly report is due by July 31.

Mr. Wilkie emphasized that all household workers should keep a record of their cash wages. At least once every three years, they should check their social security records to make sure that all cash wages have been correctly reported. They can do this by calling or visiting the local social security office.

MONTREAL



3 min station rate from Newark after 6 PM. 10% tax not included.

Some people are like blotters. They soak everything in, but get it all backward.
—The Chicago Daily Tribune.

Gossip—The art of saying nothing in a way that leaves practically nothing unsaid.
—The Seagull, U. S. Naval Depot, Clearfield, Ogden, Utah.

AUTO GLASS
INSTALLED

INSURED PICK-UP
AND DELIVERY
SERVICE

YUDIN'S

114 Washington Ave.
PL 9-2020

PEOPLES NATIONAL BANK
AND
TRUST COMPANY

237 WASHINGTON AVENUE

BELLEVILLE, NEW JERSEY



Parking for Customers
Adjoins the Bank Building

Member Federal Deposit Insurance Corporation

BE YOUR OWN SANTA CLAUS NEXT YEAR



... by joining the new Christmas Club. Be generous to yourself. Make it larger.

... by putting a part of your Christmas Club check into a savings account. A savings account can provide for everything.

... by opening a checking account, if you do not have one, to pay your bills easily, economically and efficiently.

... by buying locally. Support local merchants for they help with local taxes, local enterprises.

Our Classified Ads Bring Quick Results

SOCIAL AND CLUB NEWS OF COMMUNITY INTEREST

St. Mary's Theatre Guild
Readies Play Competition

St. Mary's gymnasium-auditorium is a beehive of activity each Wednesday evening as workshops in various phases of theatre guild activities are in session for members of St. Mary's Theatre Guild.

The ambitious program got underway in September when workshops were formed under the leadership of Mrs. Albert L. Gaydos, president, in choreography, stage craft and makeup, singing, set design, costumes, set construction and lighting.

Three one-act plays will be presented in competition Wednesday evening, November 30 at 8 o'clock, the winning production to be presented at the Christmas social of St. Mary's Rosary Society on December 8.

"Write Me a Love Scene" will be presented under the direction of Charles Byrne with the following cast, Playwright, Thomas Noone; Wife, Nancy Clark; Young Man, Walter Zilahy, and Maid, Peggy Frey.

Rose Quinn will direct "Scenario By Julian" to be given by Alice Burke as Isabel; Doris Reeves, Fanny; Phil Beischer, Julian; Kathy Fitzgerald, Myra; Mrs. Quinn, Mrs. Harker, and Frank Iberer, John.

The third play, "Lemon Pie for Andy," directed by George MacMunn, will have as its cast, Mr. Barton, Edward Burke; Mrs. Barton, Gertrude Frey; Bud, Kevin Fitzgerald; Lizzie, Ellen Kerns; Bets, Claire Christell, and

Tops In Talent In Holy Family C.Y.O.



Top winners in the recent Holy Family CYO talent contest are pictured with their trophies. Left to right are Edward Kalooky, Ralph Colombino, Richard Burnley, Ted Montegna and John Rotondelli, members of a rock 'n' roll group known as "Johnny Dee and the Sounds," first-place winners in the instrumental category; the Rev. Salvatore Malanga, spiritual advisor; Miss Patty Madeo, Mrs. Nicholas Maurillo, Adult Advisory Board cultural chairlady, and Miss Patty Borino. Miss Madeo and Miss Borino tied for first place among vocalists.

Holy Family CYO conducted a talent contest for teenagers November 7 at Holy Family auditorium, with over 300 teenagers present. The winners received trophies and will represent Holy Family in the Essex County CYO eliminations tonight, Thursday.

Sixteen entries, including vocal and instrumental performers,

MOY BING
CHINESE-AMERICAN
Restaurant

LUNCH
&
DINNER

Food put up
to take out

520
Orange St.
cor. Myrtle
Newark
HU 2-1705

GREENWOOD'S
NOW OPEN
NEW BAKERY DEPT.

Bread - Rolls - Cakes - Pastries

Open 9 A.M. - 10 P.M. Daily
Sun. 7:30 A.M. - 9 P.M.

528 Union Ave.

PL 1-2150



sought the Holy Family trophy. They were judged according to selection, talent, and presentation, the judges being Rev. Matthew Pesaniello of the Archdiocese of Newark Special Education Department, Mrs. Charles Reopell of Nutley High School Music Department, and Charles Nunzio, world famous musical instructor.

First place honors in the vocal category resulted in a tie between Miss Patty Madeo who sang, "I Can't Say No," and Miss Patty Borino, "Teach Me Tonight." The winner in the instrumental category was a rock 'n' roll group known as "Johnny Dee and the Sounds," who did "Duano." Members of the quartet are Johnny Rotondelli, Ralph Colombino, Rich Burnley, Eddie Kalooky, and Ted Mantegna.

Runners-up who will represent Holy Family in the Essex County competition are The Destinies, male vocal quintet; JoAnn and Helene Massa, vocal duet; and the Vy - Counts, instrumental group including Jerry Naso, Fred Utrachi, Ronny Davis, Joe Pic-



MRS. PETER A. ROSAMILIA
Former Barbara Manfredi

Miss Barbara C. Manfredi
Bride of Peter Rosamilia

Miss Barbara Carole Manfredi, daughter of Mr. and Mrs. George Manfredi, of 243 Little Street, and Peter A. Rosamilia, Jr., of North 11th Street, Newark

son of the late Dr. and Mrs. P. A. Rosamilia, were united in marriage Saturday afternoon, November 5, at 4:30 o'clock in St. Mary's Church, Nutley.

The Rev. John M. Golding performed the ceremony, which was followed by a reception at Royal Hawaiian Palms, Lyndhurst.

Mr. Manfredi gave his daughter in marriage. She was gown in white peau de soie, fashioned with a fitted bodice having Alencon lace applique, Sabrina neckline and long sleeves. The bouffant skirt flowed into a chapel train.

An inverted crown of nylon held her fingertip veil of French illusion, and she carried a bouquet of white stephanotis, pom-poms and white orchids.

Miss Frances Ceresia of Belleville was maid of honor, and bridesmaids included Miss Theresa Serra of Ozone Park, L. I., cousin of the bride, Miss Diane Marchese of Newark and Mrs. John Pereles of Nutley.

The attendants wore street length dresses of hot pink velvet with satin inserts, scoop necklines and short sleeves. They had velvet hats to match and carried bouquets of white mums and pink pom-poms.

Felix Martino of Newark was best man, and ushers included William Zuzzio and George Martino of Newark, and Robert Manfredi, the bride's brother.

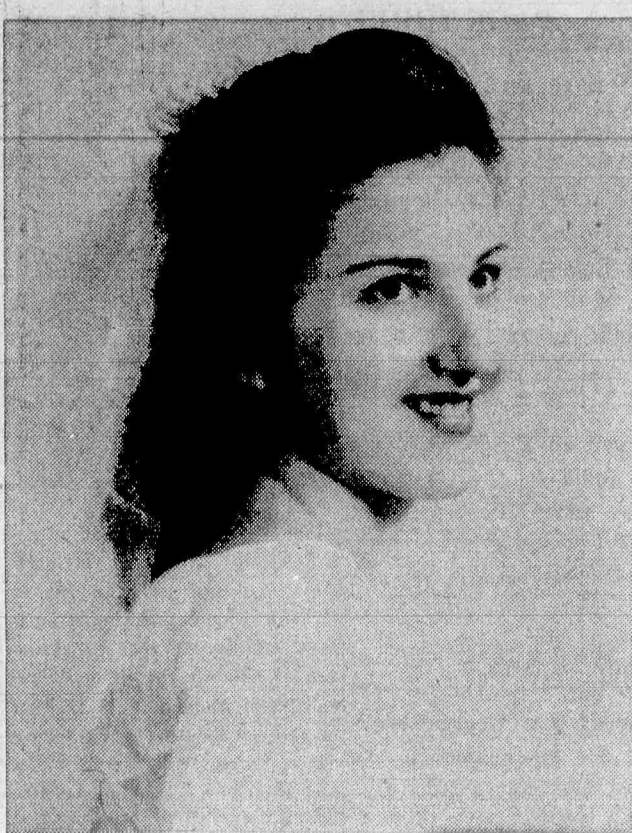
The mother of the bride was gown in blue nylon lame with accessories to match and a corsage of white orchids.

The bride was graduated from Belleville High School and her husband from Barringer High School, Newark. He served in the U. S. Navy Medical Corps during the Korean campaign. Both are employed by Blue Shield, Newark.

The couple will reside in Belleville after a three-week wedding trip to Lake Placid and Canada.

carelli, and Leni Sciacca. Arrangements were under the direction of Mrs. Nicholas Maurillo, cultural chairlady of Holy Family CYO Adult Advisory Board. Miss Anne Stellatella was in charge of rehearsals and accompanied at the piano.

EXTENSION
Extensions are useful. But here's one that's valuable. December 1 extension. What if I sit all about? Read today's Times carefully.



MRS. JOSEPH F. MEGLIO
Former Carmela Cerreto

Carmela Felice Cerreto
Wedded At Nuptial Mass

In a ceremony preceding a High Nuptial Mass, Miss Carmela Felice Cerreto and Joseph Frank Meglio were united in marriage Saturday afternoon, November 12 at 11 o'clock in St. Anthony's Church. The bride is the daughter of Mr. and Mrs. Dominic Cerreto, of 84 Harrison Street; her husband's parents are Mr. and Mrs. Joseph Meglio, of 25 South Pine Lane, Newark.

The ceremony, which was performed by the Rev. Edward Scandone, was followed by a reception at Parrillo's, Belleville.

Escorted by her father, the bride wore a gown of delustered satin featuring a fitted bodice with applied Alencon lace, scoop scalloped neckline and long sleeves. A lace panel cascaded down the front and inserted of lace down the back of the full skirt which terminated in a chapel train.

A double tiered crystal crown held her two tiered silk veil, and she carried white orchids on a prayer book.

Mrs. Joseph Conte of Bloomfield was matron of honor, and bridesmaids included Miss An-

nette Di Silvestro of Belleville and Mrs. Alex Hall of Nutley. They wore peacock blue silk organza gowns with lace bodices, cap sleeves and full, street length skirts topped with cummerbunds.

The had organza bow headpieces with veils to match, and the honor attendant carried white mums with Autumn leaves, and the bridesmaids, yellow mums.

The bride's cousin, Linda Botone of Newark was flower girl. She wore a yellow street length dress and carried white mums.

William Mulhearn of Newark served as Mr. Meglio's best man and ushers were Joseph Cerreto of Belleville, brother of the bride, and Paul Minetti of Irvington. Rocco Antonelli, Jr., of Orange, was ringbearer.

The bride is a graduate of James G. Shawger School and Belleville High School. She is a secretary with Federal Industries. A graduate of St. Francis Xavier School and Essex County Vocational and Technical High School, Mr. Meglio is a tool and die apprentice with Western Electric Company, Kearny.

Games And Awards Feature
PTA Annual Square Dance

The Parent Teacher-Association of School No. 7 will hold the second annual square dance Saturday evening, Nov. 19, at 8 p.m. in the school auditorium. Music will be furnished by Al Brender, and there will be prizes and games.

Eighth grade students will be in charge of decorations and checkroom and Mrs. Marie Livingston, hospitality chairman, heads the refreshment committee.

The association will hold its regular monthly meeting Monday evening, November 21. School visitation will be held from 7:30 until 8 p.m.

Catholic Daughters Send
Two Belleville Women
To Washington Shrine

Two Belleville women attended the dedication ceremonies of the five altars of the Immaculate Conception Shrine in Washington, D.C., last week. The Shrine is the largest church in the world.

Attending were Mrs. George J. Urchol, district deputy of the Catholic Daughters of America, and Mrs. Vincent W. Naylor of Court Santa Maria. They reside at 81 Hornblower Avenue.

The five altars were donated by the Catholic Daughters of America. Nearly 3,000 members of the organization representing every state comprised the largest delegation at the ceremonies.

Climaxing the program in Washington was a Pontifical Mass celebrated by the Most Rev. Bishop Vincent W. Waters, national chaplain of the Catholic Daughters of America.

The program for the evening will be a skit put on by parents entitled "America is Great." Sidney Fau, program chairman, wrote the skit which is based on the Bill of Rights.

Refreshments will be served under the supervision of Mrs. Livingston, hospitality chairman. The Second Grade mothers will be hostesses.

Beverly Gail Kyle

A third child, a five pound, 14 ounce daughter, Beverly Gail, arrived at Clara Maass Hospital October 11 to Mr. and Mrs. Jay F. Kyle, of 2B Bellevue Court, formerly of Washington, D. C. She joins a sister, Christine, four, and a brother, Steven, six. Mrs. Kyle was Miss Patricia Jarrett, daughter of Lieut. Col. D. L. Jarrett and Mrs. Jarrett of Washington. Mrs. Florence Kyle, also of Washington, is the paternal grandmother.

Heidi Jean Postlewait

A seven pound, 11 ounce daughter, Heidi Jean, was born to Mr. and Mrs. Calvin Postlewait, of 413 Cortlandt Street, October 13 at Clara Maass Memorial Hospital. Mrs. Postlewait is the former Miss Linda Ibbott, daughter of Mr. and Mrs. William Ibbott of the Cortlandt Street address. The Rev. and Mrs. W. A. Postlewait of Oregon are the paternal grandparents. The proud dad is employed at Federal Industries, Belleville.



Fall Fashions

CUSTOM MADE HATS TO ORDER
OTHERS \$1.98 up

Betty Claire Shop

BELLEVILLE'S ONLY EXCLUSIVE MILLINER

109 WASHINGTON AVE.

PL. 9-5726

Lady Fair

Lingerie - - - Corsetry

447 Franklin Ave., Nutley, N. J. Cor. Vreeland

ONE OF THE NICEST
SURPRISES IN YOUR LIFE



Surprise bra

A really different longline strapless
for average to full figures

Nylon lace bra . . . the most dependable, most comfortable strapless in your life. Light, flat underwire and pliable plastic ribbon in the cups control and contour the bosom - gives you a beautiful young uplift. Low front plunge, low elastic back. 2 inch elastic band curves over waist for that nipped-in look you love.

(Fiber content: Rigid sections-100% nylon exclusive of decoration. Elastic-acetate, rubber, polyester.)

Style 261-Black and White, B, C cups \$7.95.

Expert Fitting - Free Alterations

Authorized Camp Dealer

FOR HER CHRISTMAS

Cultured pearls in 14 Kt. gold
Florentine finish setting

Pendant \$14.50 Earrings \$24.50 pair

HARTOEGEN SINCE 1867

604 Central Ave., East Orange
(Formerly located in Newark)

Salute
to the
Housewife
WEEK

We gladly join with all other professional laundries in paying tribute to the most versatile, dedicated career woman in the world - you, the housewife. You do a big job every day . . . and you do it remarkably well.

We are grateful for the privilege of providing services that help you care for your family's clothing and home furnishing fabrics. And remember, we are always happy to assist you.

JOLLY

DRIVE IN
DRY CLEANERS
& LAUNDERERS

300 Washington Ave.
Belleville, N. J.

Attend Regularly The Services Of The Church Or Temple Of Your Faith



A car-pool for work?
Why not one for church?
Invite your neighbor to join
you at church this week.



CHURCH LISTINGS

Temple B'nai Israel

192 Centre Street,
Nutley
Rabbi Hyman Danzig
Friday — 8:30 p.m. Evening
service.
Saturday — 9 a.m. Sabbath
morning service. Midnight
prayer service.

Temple Menorah

936 Broad Street,
Bloomfield
Rabbi Alan Mayor Sokobin
Friday — 8:30 p.m. Services
with sermon.
Saturday—11 a.m. Junior con-
gregation under the direction of
Rabbi Sokobin.

Silver Lake Baptist Church

166 Franklin Street,
Belleville
The Rev. B. Pascale, Pastor

Sunday—10 a.m. Bible school
for all ages, 11 a.m. Morning
Worship Service, 4:30 p.m. Youth
Fellowship, 6:30 p.m., Preaching
Service.
Wednesday—7 p.m. High School
Choir rehearsal.
Friday—3:30 p.m. Junior Choir
rehearsal, 8 p.m. Senior Choir
rehearsal.

Wesley Methodist Church

Washington Ave. at Academy St.
Belleville 9, N. J.

Friday — 8 p.m. New Building
Committee meeting; sub-
committees will report.
Saturday — (evening) MYF
hayride, Livingston.

Sunday — 9:30 a.m. Sunday
school classes for all ages; 11
a.m. Thanksgiving service with
music and sermon; 3 p.m. MYF
Sub-District Rally at Calvary
Methodist Church, East Orange,
followed by MYF meeting in
Wesley Church to pack Thank-
sgiving baskets; 7 p.m. JIF meet-
ing.

Monday — 8 p.m. Belleville
Council of Churches meeting at
Fewsith Presbyterian Church.
Tuesday — 8:15 p.m. United
Thanksgiving Service in Temple
Abavath Achim. The Temple
Congregation and the congrega-
tion of Wesley Methodist Church
will follow the custom of recent
years and meet together for the
service. The service will be fol-
lowed by a social hour in the
Wesley Church dining room.

Christian Apostolic Church

77 Wallace Street,
Belleville
The Rev. Joseph Grianneli,
Pastor

Sunday — 9:45 a.m. Worship
service in both English and Ital-
ian, and Sunday School.
Tuesday—7:30 p.m. Service in
English.

Bethany Church

(Evangelical Lutheran)
Joramelon and New Streets
The Rev. Robert Siegel, Pastor.
Sunday — 9:30 a.m. Sunday
School; 9:45 and 11 a.m. Wor-
ship Service; 7:30 p.m. Luther
League.

St. Peter's Church

159 William Street,
Belleville
Rev. Msgr. J. M. Kelly

Thursday — 6:30, 7:30 and 8
a.m. Mass. 7 p.m. High School
Religion and CYO.

Friday—Masses at 6:30, 7:30
and 8 a.m.

Saturday—Masses at 6:30, 7
and 8 a.m.

Sunday—6, 7, 8, 9 (children),
10, 11 a.m. and 12 noon Masses
in the church and 9:05 and 10:05
a.m. in the new auditorium. Ben-
ediction of Most Blessed Sacra-
ment follows 11 o'clock Mass.
CYO Communion meeting
follows 8 o'clock Mass.
Sunday School follows 9 o'clock
Children's Mass. 2 p.m. Sacra-
ment of Baptism.

Monday—6:30, 7:30 and 8 a.m.
Masses.

Tuesday—6:30, 7:30 and 8:30
a.m. Mass.

Wednesday—6:30, 7:30 and 8
a.m. Mass.

Little Zion, U.A.M.E.

154 Stephen Street
Rev. Mary A. Farrar, pastor

Saturday — 12 noon on—Tur-
key Dinner with the Trustee Aux-
iliary in charge.

Sunday — (Quarterly Meeting
Sunday) — 11 a.m. The Rev. C.
L. Harris will speak; 4 p.m.,
The Rev. W. A. Harewood with
choir and congregation of St.
Mark's Methodist Church, Mont-
clair.

Montgomery Presby.

638 Mill Street,
Belleville

Sunday — 9:30 and 11 a.m.
Morning Worship Service.

Christian & Missionary Alliance

Union and Hancock Aves., Nutley
Rev. Anthony Guenther, Pastor.

Sunday—9:45 a.m. Family Sun-
day School hour with classes
from Nursery to Adult Bible
Group 11 a.m. Worship Hour
with Rev. Guenther, 6:30 p.m.
Junior and Senior Alliance Youth
Fellowship meetings, 7:30 p.m.
Son and Praise Service with Rev.

St. Anthony R. C.

58 Franklin Street
Rev. Titian Menegus

Thursday—7, 7:30 and 8 a.m.
Mass; 7:30 p.m. Devotions: Per-
petual Novena and Devotions to
Our Lady of the Miraculous Med-
al and to St. Anthony. Benedic-
tion.

Friday—Masses at 7, 7:30 and
8 a.m.

Saturday—7, 7:30 and 8 a.m.
Mass; 4-5:30 p.m. Confession.
7:30-9 p.m. Confession.

Sunday—Masses in church at
6:30, 9, 10 and 11 a.m. and 12
noon. Masses in chapel at 5
11:05 a.m. and 12 noon. Nine
o'clock Mass in church is for
children. 2 p.m. Sacrament of
Baptism.

Monday—7, 7:30 and 8 a.m.
Mass.

Tuesday—7, 7:30 and 8 a.m.
Mass.

Wednesday—7, 7:30 and 8 a.m.
Mass.

Belleville Assembly Of God

174-178 Holmes Street
Rev. Anthony DiQuattro, pastor

Sunday — 9:45 a.m. Sunday
School; 10:45 a.m. Morning Wor-
ship.

OBITUARIES



Rest Eternal Grant Unto Them, Oh Lord,
and Let Light Perpetual Shine Upon Them.

Henry Kershaw, Inventor, Dies

Henry Kershaw of 16 Leslie
Terrace, Belleville, an inventor
who held 150 patents, died Nov-
ember 6 of a heart attack in
his home. He was 78.

Services were conducted
November 10 at 2 o'clock in the af-
ternoon in the Wadsworth Funer-
al Home, 524 Union Avenue,
Belleville. Interment was in the
Glendale Cemetery, Bloomfield.

Born in England, Mr. Kershaw
came to the United States as a
young man and resided in Irvin-
gton before coming to Belle-
ville about 35 years ago. He owned
the former Kershaw Engi-
neering Company here until his
retirement from business about
13 years ago.

In addition to being an inven-
tor, Mr. Kershaw was an engi-
neer.

He held patents for inventions
in several fields; his inventions
included such things as a catho-
de tube machine to an electric
pumping device for gasoline and
a diamond cutting machine.

Surviving are his wife, Mrs.
Edith Colman Kershaw; a daugh-
ter, Mrs. Audrey Gates of San
Luis Obispo, Calif.; three grand-
children and a great-granddaugh-
ter.

James J. Carney, 50

James J. Carney of Newark
died November 10 in his home
of a long illness. He was 50.
He was the father of Mrs. Anne
Crotty of Belleville.

Mr. Carney, was born in
Kingston, Pa., and moved to
Newark 11 years ago. He was a
freight conductor for the Penn-
sylvania Railroad. He resided at
90 Eighteenth Avenue.

In addition to his daughter, he
leaves his wife, Mrs. Marie Ri-
mehimer Carney; two sons
James J. Jr., and Michael, both
of Newark; his father, Michael
F. Carney of Kingston; a brother,
Joseph of Kingston; a sister,
Mrs. Mary Kremsner of Living-
ston, and two grandchildren.

Samuel G. Maffei, 50; Public Service Worker

Funeral services for Samuel G.
Maffei, 50, of 65 Moore Place,
Belleville, were held Saturday in
a Solemn High Mass of Requiem

in Holy Family Church, Nutley.
Interment was in the Immacu-
late Conception Cemetery, Mont-
clair.

Mr. Maffei died suddenly Nov-
ember 9 in Saint Michael's Hospi-
tal, Newark. The funeral di-
rector was Samuel W. Brown,
Centre Street, Nutley.

Born in Orange, Mr. Maffei
had lived in Bloomfield before
coming to Belleville 12 years ago.
He was employed by Public Ser-
vice, Newark.

Surviving are his wife, Mrs.
Elizabeth Stewart Maffei; two
daughters, Mrs. Donald (Irene)
Murray of Belleville and Mrs.
Neal (Gail) Henning of Bloom-
field; his parents, Mr. and Mrs.
Carman Maffei of Bloomfield;
five sisters, Mrs. Guy (Joseph-
ine) Rainone, Mrs. James (Anne)
Trisuzzi, Mrs. Thomas (Nancy)
ence Johnson and Miss Carmel-
Abendschoen, Mrs. William (Flo-
rence) Johnson and Miss Carmel-
la Maffei, all of Bloomfield;
three brothers, Eugene of Bloom-
field, James of Montclair and
Anthony of Caldwell, and three
grandchildren.

D. DeLuca, 64; Ran Lunch Room In Franklin St.

Domenick DeLuca of 90 Frank-
lin Street, Belleville, proprietor
of Faye's Luncheonette at the
same address, died November 8
of a heart attack in his home.
He was 64.

A High Mass of Requiem was
offered Saturday morning in St.
Antrony's Church, Belleville. In-
terment was in Immaculate Con-
ception Cemetery, Montclair.

The funeral arrangements
were directed by the Zarro Fun-
eral Home in Bloomfield.

Born in Newark, Mr. De Luca
moved to Belleville and opened
the luncheonette five years ago.
He formerly was a foreman with
Bloomfield-Chevrolet division of
General Motors. He served in the
Army in World War I.

He leaves his wife, Mrs. Filo-
mena Miele De Luca; two brothers,
Peter of Newark and Vincent
of Cedar Grove, and five sisters,
Mrs. Jeanette Giuliano of New-
ark, Mrs. Lena Vespoli of Or-
ange, Mrs. Mathilda Guarino of
Belmar and Mrs. Alveda Laudadio
and Mrs. Jewel Ferranti,
both of Hollywood, Fla.

The Rev. Alan O'Bryan Will Address Breakfast



The Rev. Alan O'Bryan, MSSST

The Rev. Alan O'Bryan,
MSSST, of St. Joseph's Shrine,
Stirling will be the guest speak-
er at this Sunday's annual Com-
munion Breakfast of Court San-
cta Maria, Catholic Daughters of
America.

The breakfast will be in the
Knights of Columbus Hall, Bridge

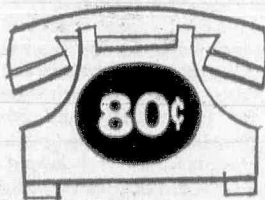
This Weeks Thought

BY HARRY H. DOUMA

Of all the powers that are pre-
sent in the world today—there
is only one Great Power that can
take a man in sin, for give him
and set him on a completely new
road in life. This is the power
of the blood of Jesus Christ. For
this week's thought let us read
this poem:

"I walked through the woodland
meadows,
Where sweet the thrushes sing;
And I found on a bed of mosses
A bird with a broken wing.
I healed it's wound, and each
morning
It sang its old sweet strain
But the bird with the broken
pinion
Never soared as high again.
I found a man's life broken
By sin's seductive art;
And, touched with a Christ-like
pity,
I took him to my heart.
He rose with a noble purpose,
Gave heaven his hand and brain;
Cannot the man God is lifting
Soar fully as high again.
The bird with the broken pinion
Kept another from the snare;
And the life that sin had stricken
Raised another from despair.
Each scar has its compensation,
God's healing is not in vain;
And the man with the mended
spirit
God CAN lift as high again!
Taken from a book published
by The Bowery Mission, N. Y.

ERIE, PA.



3 min station veto from Newark after
6 P.M. 10% tax not included.

KIERNAN

Dignified
Funeral Service

AVAILABLE TO ALL
REGARDLESS OF FINANCIAL
CIRCUMSTANCES

NON-SECTARIAN

KIERNAN FUNERAL HOME

GEORGE F. KIERNAN

101 UNION AVE. BELLEVILLE, N.J.

PLYMOUTH 9-3503

Mrs. Pierina Vaccari

Mrs. Pierina Masiero Vaccari
of 21 Garden Avenue, Belleville,
widow of Anthony Vaccari, died
November 6 in Columbus Hospi-
tal, Newark. She was 77.

A High Requiem Mass was of-
fered November 9 in Saint Pet-
er's Church, Belleville.

Mrs. Vaccari was born in Italy
and emigrated to Newark in 1910.
She lived here until four years
ago when she moved to Belle-
ville.

Mrs. Vaccari leaves two sons,
John of Wayne and Angelo of
Belleville, and two grandchil-
dren.

WILLIAM V. IRVINE & SON

MEMORIAL HOME

For more than fifty years it has been our privilege
to render personal service and offer friendly
counsel to bereaved families. Our service is per-
formed with reverence and dignity and is always
within the means of all.

276 Washington Ave.

Belleville, N.J.

PLYMOUTH 9-1114

William V. Irvine Jr., Director

FLOOR COVERINGS

• PRICE • QUALITY • WORKMANSHIP

MEADS-MILLER

NOW!

Congoleum - Nairn
SHOW CASE
VINYL
FLOOR COVERING

Also

Armstrong
TESSERA
CORLON
The New Look in
Vinyl

Call Anytime
NO. 7-4305
For Free Estimates



QUALITY
RUG
CLEANING

143 Franklin Avenue, Nutley

Showroom Hours: Daily - 12:30 to 5 P.M.—Sat. 8:30
A.M. to 4:30 P.M.—Mon. & Thurs.
Evenings 7 to 9

LUMBER and BUILDING SUPPLIES

Storm Sash Screens Hardware Insulation

Kitchen Cabinets
Made To Order



Unpainted
Furniture

RIDGE LUMBER CO.

Everything for Building

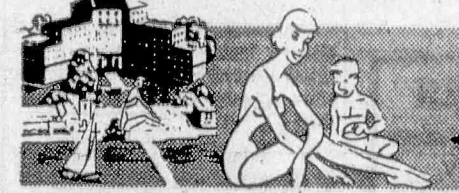
241 RIDGE ROAD - N. BELLINGTON - N.J. 8-7000

Fun for everyone

AIR-CONDITIONED
at the New General

Oglethorpe

HOTEL GOLF CLUB • COTTAGES



One of the world's finest resorts offers every facility and
activity—swimming, tennis, boating and salt water fishing
... 18-hole championship golf course at door ... dancing
nightly in the beautiful Riverside Room ... social director
—organized activities and entertainment.
Choice of American or European Plan.

COMPLETE FACILITIES FOR GROUPS AND CONVENTIONS

On Wilmington
Island near
historic

SAVANNAH, GEORGIA

Write today for FREE Illustrated Brochure or see your Travel Agent

Remember The Name

Belleville - Nutley

Tuberculosis Association

your CHRISTMAS seal
purchases PAID for

2724



FREE X-RAYS For The
People Of Our
Two Towns



314 Washington Ave., BELLEVILLE
Open Evenings & Sundays, PL 9-4200

WHEN
DEATH
OCCURS
CALL

F. Douglas
Wadsworth

WADSWORTH FUNERAL
HOME

524 Union Avenue
PLYMOUTH 9-2879



Newark Museum's New Observatory Is Opened

The official completion and opening of the Newark Museum's latest science installation, a new observatory, took place Sunday. Situated on the roof of the main museum building, the observatory is complete with a revolving dome and six-inch catadioptric telescope, capable of detailed lunar and planetary observation.

The new installation will be used as an instruction aid and to provide practical observation experience for the many astronomy groups the museum encourages. It will not be open to the visiting public.

The observatory structure consists of a circular concrete room, seven foot tall, topped by an eight-foot revolving steel turret. Centered in this room at the top of a cinder-block upright, is the main instrument. It is protected from the weather by two bi-parting steel doors, which can be rolled back to give a two-foot wide opening to the skies. The entire dome rotates on a wheel-and-track system and can be moved by hand.

The main instrument in the Newark Museum's new installation is a six-inch catadioptric telescope, which incorporates both a lens and mirror system, resulting in a relatively compact package with a focal length of 90 inches. This is large enough to satisfy the demands of the museum; although the midtown location is not ideal.

This One Sees Around Corners, 250 Feet Away

A new photo electric beam burglar-intruder device has been introduced by Kilde Ultrasonic & Detection Alarms Division, Walter Kilde & Company, Inc. Called Lyne-O-Larm, it comprises a projector and a receiver.

The projector transmits an invisible infra red beam to the receiver which can be located up to 250' away. Transmission may be either a straight line or, with mirrors, around corners. Any object passing through the beam causes an alarm to sound at any desired location(s).

Lyne-O-Larm units are easy to align, have sealed beam projector lamp, are fully transistorized and employ printed circuits. They operate on a low voltage power supply (110 AC and transformer) and have a standby battery power supply which takes over if normal power fails for up to four hours.

Lyne-O-Larm units measure only 4 1/2" deep by 5 1/2" wide and 11 1/2" high. They are approved by Underwriters' Laboratories.

One From Nutley, 12 Belleville In CYO Contest

Twelve Belleville youngsters and one Nutley contestant are entered in the annual Essex County CYO March of Talent Contest. The contest will open with preliminary eliminations at Mount Carmel Church, Montclair, this evening, Thursday, at 7:30.

The finals will be held the following night at Blessed Sacrament Church, East Orange. A plaque will be awarded to the winners in two age divisions: under 26 and under 18. Second and third place winners will receive certificates.

The winners of the several county tournaments will be eligible to compete for a special Archdiocesan plaque.

Belleville entries from St. Anthony's Church include: Terri Scutti (soliloquy), Cheryl Zecca (vocal), an instrumental group composed of Anthony Ferrara, Joseph Senatore, John Miller, Joseph Risoli and Louis Capozzi; instrumental pianist Vito Ferrara, Peter Spasato and Arthur Scobbo (vocal and instrumental) and vocal duet JoAnn Rosamilia and Bernadette Rossi.

John G. Budenas of St. Mary's, Nutley, will offer an instrumental number.

C. F. Sebek Leaves Western Electric

Charles F. Sebek, of 15 The Enclosure, retired from Western Electric Company early this month after a service record of more than 44 years.

Mr. Sebek was a section chief in the equipment engineering organization when he left.

He is a member of Stanley S. Holmes Chapter of the Telephone Pioneers of America, an organization composed of long service telephone employees. He finds pleasure in writing and receiving voluminous mail from Pioneer life members and now has become a life member himself.

cation of the museum will present some difficulties in long-range observation, the ready accessibility of the observatory and plans for extensive planetary viewing more than off-sets such problems.

At present the museum has three school-age groups and one adult astronomy group who will benefit directly from the use of the new installation. Museum astronomy facilities are also used with the in-service courses given for Newark teachers and for special training, such as the astronomical courses for gifted students, given this summer in cooperation with the American Astronomical Society. Local colleges are also expected to use the observatory.

In addition to the observatory's obvious educational value, it is also expected to be used for extensive astro-photography studies. The first full scale photo record was attempted at the observatory November 7 during a transit of Mercury, which passed between the Earth and the Sun. Detailed photo-observations will also be made of nearby planets.

Tips Given On Christmas Mail

Faced with the possibility that the 1960 Christmas season will set an all-time holiday mailing record, Postmaster L. A. Reilly has announced that he's starting his annual "Mail Early for Christmas" campaign immediately.

The Postmaster offers these helpful mailing tips to insure delivery of your Christmas cards and gifts on time:

First, check your Christmas card list very carefully—make sure each address is complete with full name, street and number, city, zone and state. Second, for your Christmas gift packages, stock up now on heavy wrapping paper, sturdy corrugated cartons, strong cord, and paper adhesive tape.

Third, remember that you can include your Christmas card or letter inside your gift package by adding the appropriate first class postage to the package itself. Fourth, buy your postage stamps now. Don't wait until the last minute, when long lines form at the stamp windows.

The Post Office will help you plan your Christmas mailings. Get a copy of Pamphlet No. 2, which gives full information about proper packaging and wrapping of parcels. The Post Office will also supply free labels which read, "ALL FOR LOCAL DELIVERY" and "ALL FOR OUT OF TOWN DELIVERY" so that you can sort your Christmas cards into two groups, with addresses all facing one way, thus insuring fast delivery.

Use only first class postage on your Christmas cards. Cards sent by first class four cent, or seven cent air mail, may include personal handwritten messages. First class mail also receives full forwarding and return service. Don't fail to put your return address on every Christmas card envelope. Not only is this socially correct, but it also helps tremendously to keep the mailing lists of both you and your friends up-to-date.

Postmaster Reilly says that with your help he'll get the Christmas mails through on time. He is making many advance preparations to handle the 1960 Christmas mail rush by putting on extra mail clerks and carriers, and by arranging for expanded facilities all around.

The Postmaster requests that you make it a point to mail your Christmas cards and gifts for the most distant points well before Dec. 10. Those for nearby destinations should be mailed by Dec. 15, or at least a week before Christmas.

CD Units

(Continued From Page 1)

The control center at CD Headquarters was manned by William Fisher, W2CCK; Jimmy Condon, WA2IFY and Richard McKinley, WA2EDM.

Ed Johnson, K2ORI acted as relay between all stations when direct communication was difficult due to outside interference. William G. Hunt, K2UCY, was in over-all charge from the control center at headquarters which was open to the general public until the ceremonies were over at 9:30 p.m.

Free messages to men and women in service overseas were offered via radio transmission duplicating a feature which was introduced on Veteran's Day, 1959.

The free Radiogram service will again be offered at CD headquarters from now on throughout the Christmas and holiday season and this service is available to anywhere in the world where the addressee has an APO number, and to any civilian, friend or relative in the United States, Hawaii or Alaska. For full information, call PLYmouth 9-5100.

Map Page Winner

(Continued From Page 1)

brought it to the football locker room at the high school. There Joe spotted Arlene's picture and it was only a matter of minutes before he appeared at The Times office with the first correct entry.

Arlene, who is 17 years old, has been active in Belleville High School affairs. She is presently the senior class representative on the Senate and has served two years on the Student Council. She has an older brother, John 19, who is studying in Rutherford at Fairleigh Dickinson University. Arlene hopes to study elementary education at Newark State College.

Meanwhile Joe has his eyes on Old Queens in New Brunswick. He would like to study liberal arts at Rutgers. The son of Mr. and Mrs. John Cernero, he has served two years on the high school student council and another year on the senate.

NEW CONTEST

A new contest starts today on the map page. Participating sponsor of this week's contest is W. T. Hart Jewelers, 392 Washington Avenue.

The rules for this week's contest follow:

Turn to the double-spread map page and you will see a picture of a group of people snapped somewhere in Belleville.

One of the persons in the photo is singled out with a circle.

Readers are invited to identify this person and the spot where the picture was taken. The first one to do so—by mail or in person at the office of The Times—will receive an award of \$5. Please note: Identification of the person and place must be made by coming to the office of The Times, 246 Washington Avenue, or by mail. Phone calls will not be accepted.

The person who is circled is requested to call at our office in person and receive a \$5 check drawn to the order of one of the cooperating merchants listed on the map page.

It is important in playing this fascinating game of identification to note these simple rules: 1) the winner must tell us who the person is whose photo is circled and where picture was taken; 2) entries in the contest must be made in person or by mail—not by phone; 3) the prize will be awarded to the one who submits the first correct identification; 4) all decisions by The Times are final.

LAZY?

Be lazy. Don't walk to the store to buy your weekly copy of The Belleville Times. Be smart and save money over the newsstand price by being a subscriber to The Times. Call PLYmouth 9-3200 now!

PL 9-1497 EYES EXAMINED

Dr. M. Roachvarg

OPTOMETRIST

BY APPOINTMENT 132 Washington Avenue
Belleville

BELLEVILLE AUTOMOTIVE SUPPLY CO.
33 WASHINGTON AVE.
AUTOMOTIVE MACHINE SHOP
— DUPONT PAINT —

A.P. Mufflers & Pipes Delco Remy Ignition
Borg Warner Clutches New & Rebuilt Fuel Pumps
Rebuilt Clutches Carburetor Kits
Thermoid FHP Belts EIS Brake Parts
PL. 9-0400

Times are final; 5) there is a playground because "I wasn't notified before hand about either of the bills."

The purchasing agent explained that present policy demands that all purchases, save emergencies, must be negotiated through his office. When explaining the dilemma of the missing manual, McLaughlin said that no other town in New Jersey has such a manual. Padula said that he was always under the impression that "the rules and regulations and the manual were the same thing."

Each week The Times staff photographer will take a similar picture somewhere in Belleville. Each week the picture will appear on the map page and test your ingenuity—and your power of observation. It can be lots of fun. Get started now. Work fast. Be the first to come to our office with the right answers! Remember, being first means being the winner.

Bridge Survey

(Continued From Page 1)

come up with any commitment." He added, "You can't run a town on verbal promises."

SECOND SIDE

In addition to determining who, if anyone at all, is to build the bridge, the problem has a second side: what kind of a bridge is to be constructed? Some say a footbridge. Others take the public safety view and maintain that it ought to be a traffic bridge which could be used during emergencies by fire and police apparatus.

Gruhin, who is frequently the victim of verbal attacks from Bass, told the Rutan group at the October 25 meeting that "I will be very interested in knowing the outcome of your survey."

Bass kept sidetracking from the survey issue when contacted this week by The Times. At one time he said the survey was unsuccessful and was stopped. Later he said that the survey would be continued.

"We were coming up with other things . . . certain things which I'm not at liberty to tell you now," Bass said.

Reasons for an incomplete survey given by Bass ranged from "interference by another fellow taking a survey" to "we were busy working for the United Fund campaign."

NOT UP TO TOWN

Gruhin noted that whatever the outcome of the controversy is, "it's not up to Belleville to build bridges." He noted that Essex County is directly responsible for all bridges and that the New Jersey Department of Economic Development and Conservation has control of spans over rivers.

Bass ended his comments with this newspaper by saying that "perhaps I'll have something to add later in the week." He did not elaborate.

Diabetes Week

(Continued From Page 1)

ment of Health and the East Orange Department of Health, joined in issuing the following instructions to those wishing to be tested for diabetes:

"Those tested should appear about two hours after eating a hearty meal, rich in sugar and sweets for best testing results. The test will be made from a finger-blood specimen. This test is not painful and takes only a few seconds."

BELLEVILLE TEST

The Belleville executive health officer also notes a detection device which "can be used in the privacy of one's own home" can be obtained now at the Belleville Health Department.

After a specimen has been taken, a special "Dreypack" is mailed back to the health office.

Diabetes is found so infrequently among children that their participation is not recommended although it is not prohibited.

IN NEWARK

Another detection center will be located in the lobby of the new Blue Cross-Blue Shield building at 500 Broad Street, Newark, at the corner of Bridge Street. Belleville residents can reach this location by taking Public Service Bus No. 13. The Newark testing station will be open today and tomorrow from 10 a.m. to 3 p.m.

Purchasing Agent

(Continued From Page 1)

Thursday's meeting, those attending were Francis McCoy, treasurer, representing the revenue and finance department; Edward G. Burdzy, sanitarian, public affairs department; James C. Soldo, principal clerk, public works department; Charles Tedesco, administrative clerk, public safety department; Edward J. Lister, parks and public property, and Thomas J. McLaughlin, purchasing agent and his assistant, Edward Hahn.

McLaughlin opened the meeting by explaining the events of past days. The current issue grew out of McLaughlin's refusal to pay two bills totaling \$1,300 for work on the Fairway Avenue

playground because "I wasn't notified before hand about either of the bills."

The purchasing agent explained that present policy demands that all purchases, save emergencies, must be negotiated through his office. When explaining the dilemma of the missing manual, McLaughlin said that no other town in New Jersey has such a manual. Padula said that he was always under the impression that "the rules and regulations and the manual were the same thing."

TECHNICAL SERVICES

An entirely new aspect of the controversy was introduced Thursday when Burdzy asked for a definition of "technical services" as used in the 1954 ordinance.

The ordinance gives the commissioners permission to let contracts for "technical services" without going through the purchasing department. Attorney D'Avella will also present an opinion on this aspect of the ordinance next Wednesday.

It's believed that Burdzy's question was presented in the hope of providing a means of getting the commissioners' approval of vouchers from the shade tree commission for cutting trees during Hurricane Donna's aftermath.

Reports that trees were cut on private property are being investigated and until these reports are returned, the commissioners have withheld their approval of the tree-cutting bills.

Kiernan told The Belleville Times yesterday that if Padula asks for an amendment to the 1954 ordinance, "it would appear to be an admission that the purchasing department has been operating without any legal basis for the past six years and ten months."

Planning Board

(Continued From Page 1)

and Gruhin. Projecting ahead, this date is only a few days before the commissioners meet on December 6 when some action on the ordinance can be expected.

UNEXPECTED

The subdivision ordinance has caused more controversy than the planning board had anticipated or wants. Late last month, for example, planning board president Ralph Visco said that there was a possibility the ordinance would be considered at the commissioners' October 25 session.

Visco also announced that the proposed ordinance has received the approval of the Urban Planning Associates of New York which is preparing a master plan for Belleville.

PROMISES?

One report circulating around town hall is saying that Mayor Isadore Padula already has pro-

posed the planning board he would introduce the ordinance. However, Padula told The Times that such reports stemmed from a meeting "two or three months ago and there's no truth to it at all today."

Padula stated that the introduction of the ordinance is in Gruhin's hands. He refrained from offering any indication as to what he would do if Gruhin did not introduce the ordinance. "It's now entirely up to the planning board and Mr. Gruhin," Padula concluded.

PURPOSE

The introductory statements to the ordinance defines its purpose "to provide rules, regulations and standards to guide subdivisions and or aggregation in the Town of Belleville in order to promote the public health, safety, convenience and general welfare of the municipality. It shall be administered to insure the orderly growth and development, the conservation, protection and proper use of land and adequate provision for circulation, utilities and services."

for security buy a home THROUGH A REALTOR

A Realtor:

1. Is a member of your local real estate board and of the National Association of Real Estate Boards—he is not "just any real estate broker."
2. Is pledged to conduct his business in accord with a strict Code of Ethics.
3. Can give you the soundest guidance in all aspects of home purchase because of his background and access to the world's largest storehouse of real estate knowledge.
4. Can help arrange the most favorable home financing for you because of his knowledge of the current mortgage market and his contact with local lenders.



BOARD OF REALTORS

Bloomfield - Glen Ridge - Nutley - Belleville

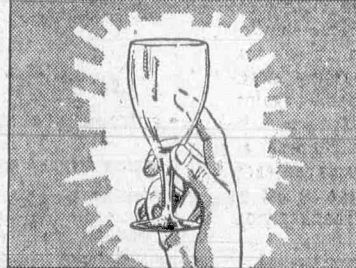
"It Costs No More"
To Buy or Sell Property
Thru a Member of the
Multiple Listing System

Belleville	Bloomfield
William Abramson	E. W. Ackerknecht
Harland D. Box	Joseph T. Baumgardner
Jacobs Realty Co.	John M. Betts
George B. Pifer	Hank Borowy Rlty. Co.
Rose M. Reilly	George Catino, Jr.
Norman H. Thompson	Geo. Christian Rlty. Co.
James J. Tully	Howell S. Cogan
	James A. Delisio
	Jeanne Elderkin
	Flora Realty Co.
	General Associates Inc.
	Arthur G. Hill
	Bernard Hillman
	Johnson Realty Co.
	Martens Agency
	Martin Realty Co.
	McCoy Inc.
	Pat Meoli (MidState Rlty.)
	Hugh F. Murphy Agency
	Peter J. Quinn
	George E. Reilly
	Rent-Sale (Max Swift)
	Albert M. Robinson
	Whitney H. Roddy Inc.
	Bernard Werbel
	Glen Ridge
	Nathan Russell Inc.
	Hilton C. Brewer Co.

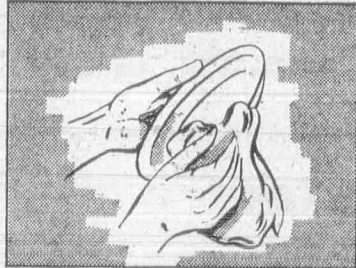
DON'T BE A DISHWASHER- Buy One!



Holds up to 12 place settings!



Dishes and glasses sparkle!

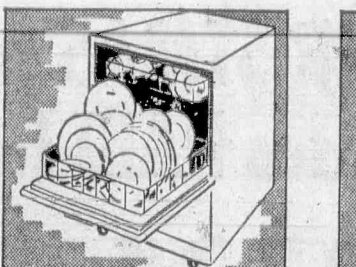


Eliminates drying!



Cuts kitchen clean-up time!

PORTABLE DISHWASHERS ARE EASY TO USE!



Easily rolls to any spot!



Simply attach hose to faucet!

BUY A DISHWASHER AT YOUR FAVORITE STORE



for **FENCES**
(or any home building supplies)

find out Fast in the
YELLOW PAGES

BY DOM GIOVACHINO

The Bellboy defensive line, led by Ralph Casale, Lou Pomponio, Fred Partus and Joe Cernero did a fine job in holding down the Kearny Cardinals until the final quarter when Tony LaStada threw two TD passes. These boys have been doing a consistently fine job, and showed as the Kearny ground attack was stymied in the first half.

Belleville proved again Saturday that they are a "first half club." All season this trait has been noted as the team seems to lose life in the second half. The Bellboys started out like a house afire scoring two touchdowns in the first nine minutes and another one before the half closed.

They were running and passing well, and the Kearny offense was completely ineffective against the Blue and Gold. However, in the second half, Kearny began to move while the Bellboys were slowing down. By the final period, the Cardinals had picked up enough momentum to give them a 13-6 edge over the second half.

Frank Annichiarico, still bothered by a weak ankle, got in a few plays Saturday. However, he still leads the team in total points scored with 30. Sal LoCoco picked up seven more to give him 26, while Luzzi's TD gives him 20. George Sheridan who played another fine game Saturday now has 18 points while Walt Smith's first touchdown Saturday gives him seven.

Belleville has no game now until Thanksgiving Day when they meet Orange High at Orange. Orange is now 7-1 while the Bellboys are 3-5. But the one game Orange lost was to East Orange by one point and Orange is still in the running for a sectional group four title along with Nutley and Montclair. Orange will be keyed up for this game and the Bellboys are going to have a rough time keeping up with them.

BY ROGER WARTELL

Last Sunday at the Newark Museum a demonstration was given on Olympic fencing. Given in connection with the exhibition Sports in Art, the demonstration is one of a series of sporting events scheduled for the winter months. Information on future exhibitions can be found out by calling the Museum. The demonstration was held at the Museum's court and started at 3 p.m. The admission was free.

All three of the weapons used in Olympic fencing were demonstrated as well as the electrical fencing equipment used in Rome. Among the fencers invited to take part in the program were students from Fairleigh Dickinson and former Olympic fencers from the New Jersey area. After making three wrong predictions in as many weeks we will not be surprised if Belleville upsets Orange on Thanksgiving just to spite us. Although Orange has a very strong team this year it is not as strong as some might suppose. It's lopsided victory over Nutley was not a true showing since the team was up for that game. Belleville's passing attack proved very formidable against Kearny last week. If it could be combined with the running attack the Bellboys displayed early in the season, Orange might be in for trouble this Thanksgiving.

The Belleville - Nutley Iron Dukes ended their first season in the Eastern Football League with a 0-0 tie with the Stratford Giants last Sunday. This tie brought their record to 6-3-1 and enabled them to take over third place.

The Dukes missed their chance of making it five wins in a row when Frank Barnes missed a 10-yard field goal in the final minutes of the game. Although their third place showing was not a bad one, we are sure that if they had not lost key players in the beginning of the season the Dukes would have easily taken second place. It must be remembered that the Belleville-Nutley squad was the only team to hold the undefeated Franklin Miners to three points.

Last Saturday was an odd one for high school football. Bloomfield led Nutley 7-6 at halftime. Although Nutley won, there were some schools which pulled unexpected upsets. Remember Garfield which played here not too long ago? Garfield edged out Paterson East Side Saturday, a team which had ranked third in the state, behind Nutley and Phillipsburg in that order.

With the season offering but the Thanksgiving game for Belleville fans, another East Side, this time from Newark, together with Montclair, Nutley and Orange are all in the running for the Group IV championship in Essex with 7-1 records.

We were so wrong in forecasting the outcome of the Kearny game that we're not so sure now that Orange will finish its slate with an 8-1 mark after all.



The Belleville Times

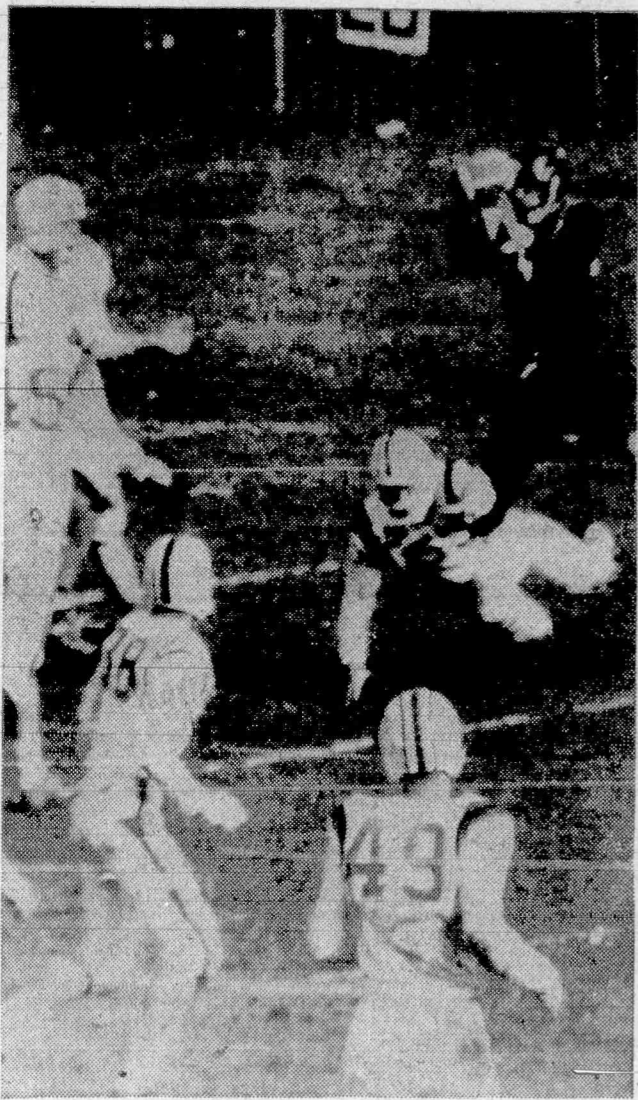
News



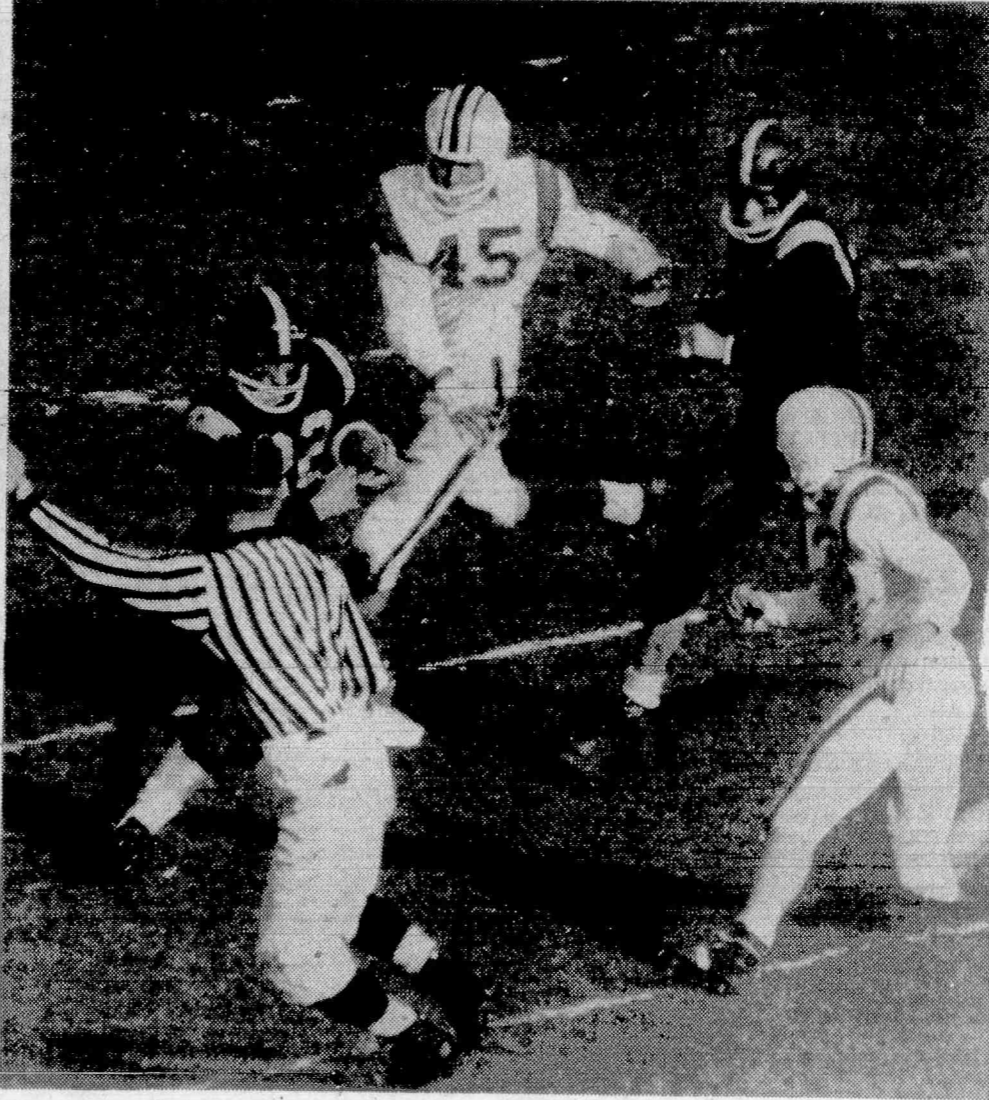
THURSDAY, NOVEMBER 17, 1960

PAGE SEVEN

Pass Interceptions, Keen Running Spark Victory



ANOTHER INTERCEPTION: This time it was lineman Lou Pomponio (upper right) who not only broke up a Kearny pass play, but intercepted the aerial on the Belleville 39 yard marker. Kearny's star Eugene McManus tossed the play away. Lou pulled down the ball here in the first period Saturday.



ONLY A SOPHOMORE: Richie Luzzi, Belleville's star halfback, not only pulled down a Kearny pass a second before this picture was taken, but here he is shown on his way to the goal 50 yards away! This is featured play Saturday resulted in the Bellboys' second touchdown. Kearny players in white, Vince Majkowski (45) and Allen DeMauro (right) were unable to stop Luzzi. Belleville's Carmen Mineo is the second BHS player shown above.



TOUCHDOWN CATCH: Belleville end Walt Smith (right) hugs ball in a solid catch from George Sheridan, 37-yards-away. This Sheridan-Smith combo gave Belleville its first score Saturday on the play pictured above. Kearny player (40) is George Halpin.

BHS Eleven Scores 25-13 Win Over Kards Saturday Final Game on Thanksgiving

BY DOM GIOVACHINO

Belleville High turned on the power early Saturday to pick up 19 points in the first half and open the door to its first victory in three weeks over Kearny High School, 25-13.

The Bellboys quickly scored on the sixth play of the game—when they returned the opening kickoff 73 yards and looked like a well-organized team.

The score came in a 27-yard pass from George Sheridan to end Walt Smith who took it on the 10 and carried it into the end zone. Sal LoCoco's kick was good for the conversion.

A short while later, Richie Luzzi intercepted Gene McManus' pass on the 50—the second of three Bellboy pass interceptions in the first quarter—and raced down the sideline for the score. This time LoCoco's kick missed its mark.

A bad Kardinal punt late in the second period, gave the Bellboys possession on the Kearny 24. On first down, quarterback Joe Latore missed his target on a pass attempt, but in the second play he found end Sal LoCoco in the clear and hit him in the end zone, making it 19-0. LoCoco's first kick split the uprights, but a penalty called against the Blue and Gold forced him to kick again, and this time it missed.

The half ended with Carmen Mineo scoring Belleville's fourth

H. S. Schedule

(Games at 2 p.m.) . . .
Sept. 24—East Orange (15) at Belleville (6).
Oct. 1—Belleville (0) at Bloomfield (20).
Oct. 8—Nutley (34) at Belleville (0).
Oct. 15—West Side (7) at Belleville (30).
Oct. 22—Belleville (27) at Irvington (7).
Oct. 29—Garfield (14) at Belleville (0).
Nov. 5—Southside (18) at Belleville (13).
Nov. 12—Belleville (25) at Kearny (13).
Nov. 24—Thanksgiving Game at 11 a.m.; Belleville at Orange.

pass interception of the half.

FAVORABLE FUMBLE

In the third period, everything was reversed as Kearny controlled play throughout. After taking the kickoff they marched from their own 30 to the Belleville 2 piking up four first downs along the way. However, a costly fumble ended their threat here and the Bellboys took over on their own 13.

On the next play George Sheridan, who had another fine day from both quarterback and halfback, thrilled the crowd with a dazzling run to the Kearny 40. However, in four downs Kearny held and took over.

Early in the final period, Kearny began to move again. They took a punt from Pat Moreno on their own 46 and in eight plays brought it to the Belleville 20. Then Tony La Stada passed to Vin Majkowski for their first score. The conversion attempt failed.

Three plays after Belleville took the kickoff from the Cardinals, George Sheridan climaxed a fine day for the Blue and Gold with some tricky broken field running, for their last tally. He broke off right tackle, then cut to the left, and outran the Kearny secondary picking up a final key block from Sal LoCoco. The kick was "no good."

But, as it looked to most, the game was not yet over, for just before the final gun, Bill Tilson took a pass from La Stada and raced into the end zone, the play covering 49 yards. La Stada then tossed to Majkowski for the PAT

making it 25-13.
Belleville 13 6 0 6 25
Kearny 0 0 0 13-13

Belleville—Smith 37 pass from Sheridan (LoCoco kick).
Belleville—Luzzi 50 intercepted pass (kick failed).
Belleville—LoCoco 22 pass from LaTore (kick failed).
Kearny—Majkowski 20 pass from La Stada (kick failed).
Belleville—Sheridan 65 run (kick failed).
Kearny—Majkowski 50 pass from La Stada (Tilson pass from La Stada).
Officials: Sandine, Comba, Zio-bra, Cuchinello.

Dukes' Schedule

Sept. 11. Franklin Miners (3) at Belleville (0).
Sept. 8/ Dukes (0) at Stamford, Connecticut, Golden Bears (3).
Sept. 25. Paterson Pioneers (0) at Belleville (20).
Oct. 1. Dukes (9) at Allentown, Pennsylvania, Copperheads (17).
Oct. 9. Philadelphia (6) at Belleville (32).
Oct. 16. Jersey Alvics (14) at Belleville (26).
Oct. 23. Mount Vernon Eagles (13) at Belleville (32).
Oct. 30. Dukes (9) at Swedesboro, (7) N. J., Red Devils.
Nov. 6 Union County All-Stars (6) at Belleville (16).
Nov. 13. Stratford, Conn., Giants (0) at Belleville (0).
Nov. 20. Dukes at Jersey Alvics, West New York, N. J.
xNight game.

Jayvee Schedule

Sept. 26—East Orange—Away.
Oct. 3—Bloomfield—Home.
Oct. 10—Nutley—Away.
Oct. 17—West Side—Away.
Oct. 24—Irvington—Home.
Oct. 31—Garfield—Away.
Nov. 7—South Side—Away.
Nov. 14—Kearny—Home.

Housewives Bowling

The Sparkplugs are holding on to their number one position in the Recreation - Olympic Housewives Bowling League with a record of 18 wins and six losses.

Second place Suburban Jets are breathing down their necks, however, with a record of 17 and 7. Marie Gorman of the Spark Plugs rolled high average of the League 141. Bertha Morrison of the Spectacular Three high game 186. Mary Ross of the Olympics high series 472, and Ann Somma of the Suburban Jets 3321. The league rolls every Thursday at 1 p.m. at Olympic Lanes.

STANDINGS	W	L
Sparkplugs	18	6
Suburban Jets	17	7
The Three Sports	15	9
Beatniks	15	9
Fire Bugs	15	9
The Three Belles	15	9
Chicks	14½	9½
The Three "A's"	14	10
The Three Queens	13	11
Olympics	13	11
The Three Jokers	13	11
Sparkettes	12	12
Mud Heads	12	12
Pioneers	12	12
Spectacular Three	11	13
Legion	11	13
Newsters	11	13
Sad Sacks	11	13
Beginners Luck	11	13
The Rockets	10	14
Hi-Los	10	14
Diavolos	9½	14½
Lucky "13"	9	15
Forget Me Knots	9	15
The Bells	9	15
The Three Aces	8	16
Gutter Balls	7	17
Beginners	5	19

Pin Pals Ahead

Wednesday was "Bumper Night" in the Recreation Woman's Bowling League at Branch Brook Lanes and the evening resulted in quite a few changes in the standing of the teams—the Pin Pals and the Spares are now tied for first place, both with a record of 14 wins and 10 losses, but the second place Raiders with a record of 13 wins and 11 losses are only one game behind.

The standings now are as follows:

TEAMS	W	L
Pin Pals	14	10
Spares	14	10
Raiders	13	11
Slick Chicks	12	12
Nutty Squirrels	11½	12½
Belles	11	13
Straight Pins	10½	13½
Sad Sacks	9	15
Dolores Yanicak of the Slick Chicks and Elaine Pandora of the Pin Pals are tied for high game slot, both rolled 196. Dolores rolled high average for the league 149 and Elaine rolled high three game series 527.		

Junior Varsity Smashes Kearny, 26-0, to Earn First Perfect Season in 20 Years

BY AL LEMBERGER

The Belleville High Junior Varsity, led by Coach Al Estey, did what no other Belleville Junior Varsity did in the past 20 odd years and went undefeated. The

Fewsmith Men's League

Again this week the top ten bowlers were well shuffled, when Paul Van Ness of the Busters pounded out a couple of good 200 games to jump from fifth to third place in the standings.

Some poor and some very good games also changed the team standings around a bit, the Spoilers taking over undisputed possession of first place by taking the two games from the Oldtimers, and second place being won by the Busters who took two from the Hilltoppers.

The Farmers began to come alive again, by taking three from the lowly Mufties.

TEAM STANDINGS	W	L
Spoilers	14	7
Busters	13½	7½
Oldtimers	13	8
Hilltoppers	13	8
Farmers	10	11
Aces	9	12
Cubs	7½	13½
Mufties	4	17
Avg. Hi Score		
Fabian	174	210
Buist	171	245
Van Ness	171	213
Farrar	169	255
Hundertpfund	167	211
Horman	166	222
Dahlquist	166	201
Kochler	160	192
Jackson	159	212
Goody	159	211

Intermediate Loop Set To Open on Wednesday; New Teams May Enter

Recreation Superintendent Robert E. Cook has announced a second meeting for managers of basketball teams interested in playing in the Recreation Intermediate Basketball League. This, the final meeting will be held Monday at 7 p.m. in the Recreation House. This year's turnout has been rather poor with only four teams registered. It is hoped that there will be eight teams or more in the

"wonderboys" finished the 1960 season 8-0, with a 26-0 victory over Kearny.

The Bellboy's first touchdown came three plays after Pat Valse recovered a fumble on the Kearny 49-yard line. Stan Tomaszewski went 49 yards around end for the six-pointer and then added the extra point with another end run.

After the Bellboy defense forced Kearny back 32 yards in three plays to their own one, Pat Moreno took the fourth down punt back to the Kearny 19. From there it only took two plays with quarterback Ken Zarro throwing to Moreno for the 13-0 score.

The next score came again after a Kearny fumble. The Bellboys moved the ball 69 yards in nine plays as a strong forward showed the way. The climax to this march came when Frank Zinna hit the center of the line for seven yards and the touchdown.

A pass from Zarro to Bob Byers was good for the extra point and made the score 20-0. This closed out the offensive scoring, as the Kearny defense tightened up. The defense did manage to add a touchdown with a spectacular punt returned by Bob Byers. Byers, sprung loose with a fine block by Bob Puccarelli, fought his way 57 yards into the end zone to make the final score 26-0.

This victory was an excellent

one to end the season with, because of the supreme team effort. The defense, which was great all season yielding less than one touchdown per game, played a fine game as they held Kearny scoreless and scored one touchdown themselves.

Drew Horvat, Mike Rega, Captain Pat Valse, Richie Black and "Red" Higgins are a few of the players who were outstanding all season on defense. The offense, which had been off and game as they rolled up three on all season, was on for this touchdowns.

The offensive line which showed the way to many of the scores this season was led by Joe Long, Bob McGeown, Joe D'Ambola and Vinnie Sorrentino.

ROLLER SKATING
THE NEW
BELLEVILLE RINK
Fun - Thrills & Games
For the Entire Family
"The Rink of Refinement"
Open Every Night
7:30 to 11 P.M.
Except Sunday
Special rates for party groups
Saturday - Sunday -
Holidays - 2 P.M.
701 Washington Ave.
Belleville
PL 9-4969

OLYMPIC BOWL

NOW OPEN
NEW MODERN
BILLIARD ROOM

OPEN BOWLING SCHEDULE

Monday All Day — Wednesday All Day

Thursday All Day — Friday Until 9 P.M.

WEEK END HANDICAP SWEEPS

MEN & WOMEN INVITED

\$330 GUARANTEED PRIZE FUND \$330

Fri. 12:00 A.M. TO 5:00 A.M.

Sat. 8:00 P.M. TO 3:00 A.M.

Sun. 9:30 P.M. TO 2:00 A.M.

679 Washington Ave., Belleville Phone PL. 1-2111

Belleville Rosery
302 Washington Ave.

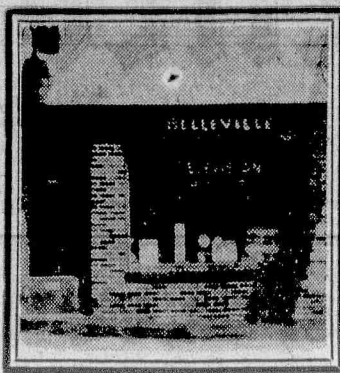
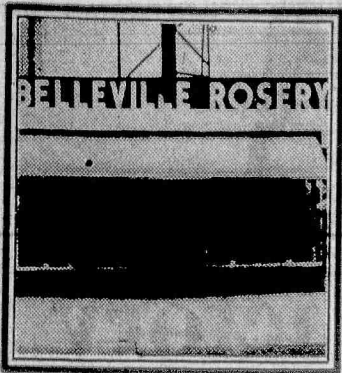
Tiber Hardware
125 Washington Ave.

Tom Antonelli Floor Covering
880 Franklin Ave., Newark

Belleville T. V. Service
28 Washington Ave.

Tannen's Shoe Shop
141 Washington Ave.

Harry's
879-83 Franklin Ave., Newark



11

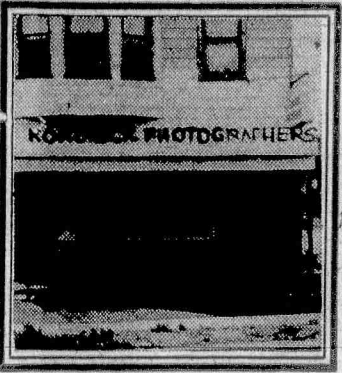
2

3

4

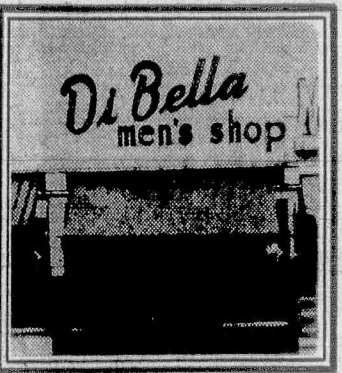
5

6



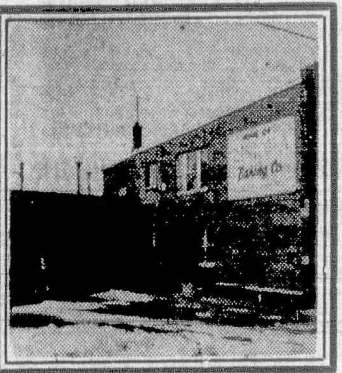
36

Kondreck Photographers
577 Washington Ave.



35

Di Bella Men's Shop
155 Washington Ave.



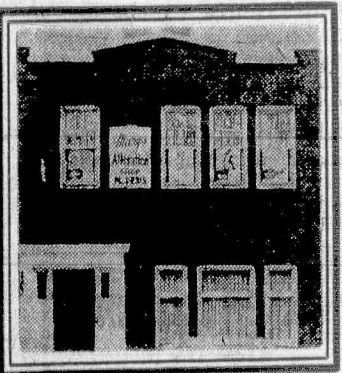
34

Zinicola's Bakery
King St. Near Union Ave., Nutley



33

Bigelow Motors
50-64 Washington Ave.



Mary's Alteration Shop
252 Washington Ave.

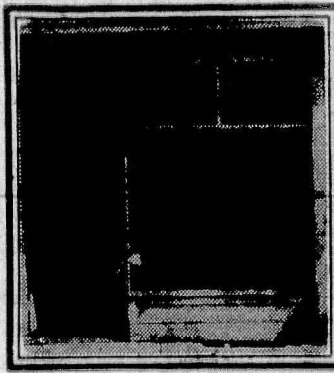


31

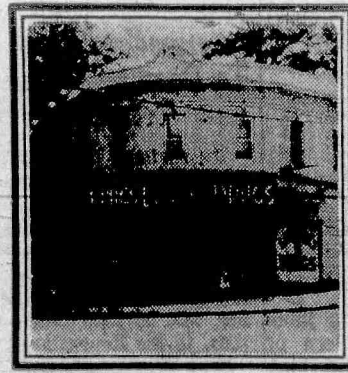
Cordasco Furniture Co.
80 Washington Ave.



The Glass Co.
585 Washington Ave.



Belleville Travel Service
246 Washington Ave.



Laterza's Drugs
313 Union Ave.



Muscara Music Co.
314 Washington Ave.



Rug Shop
137 Washington Ave.

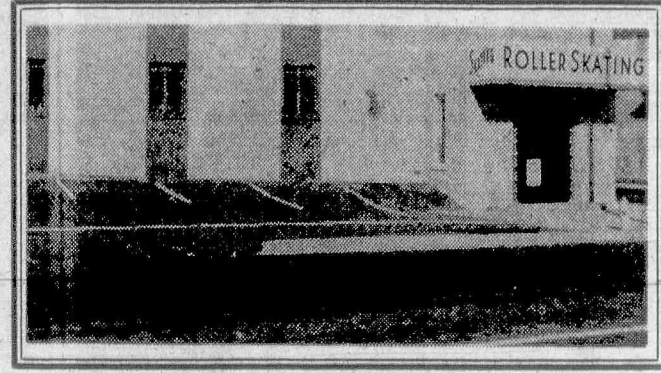


Logan Auto Radiator Co.
135 Main St.

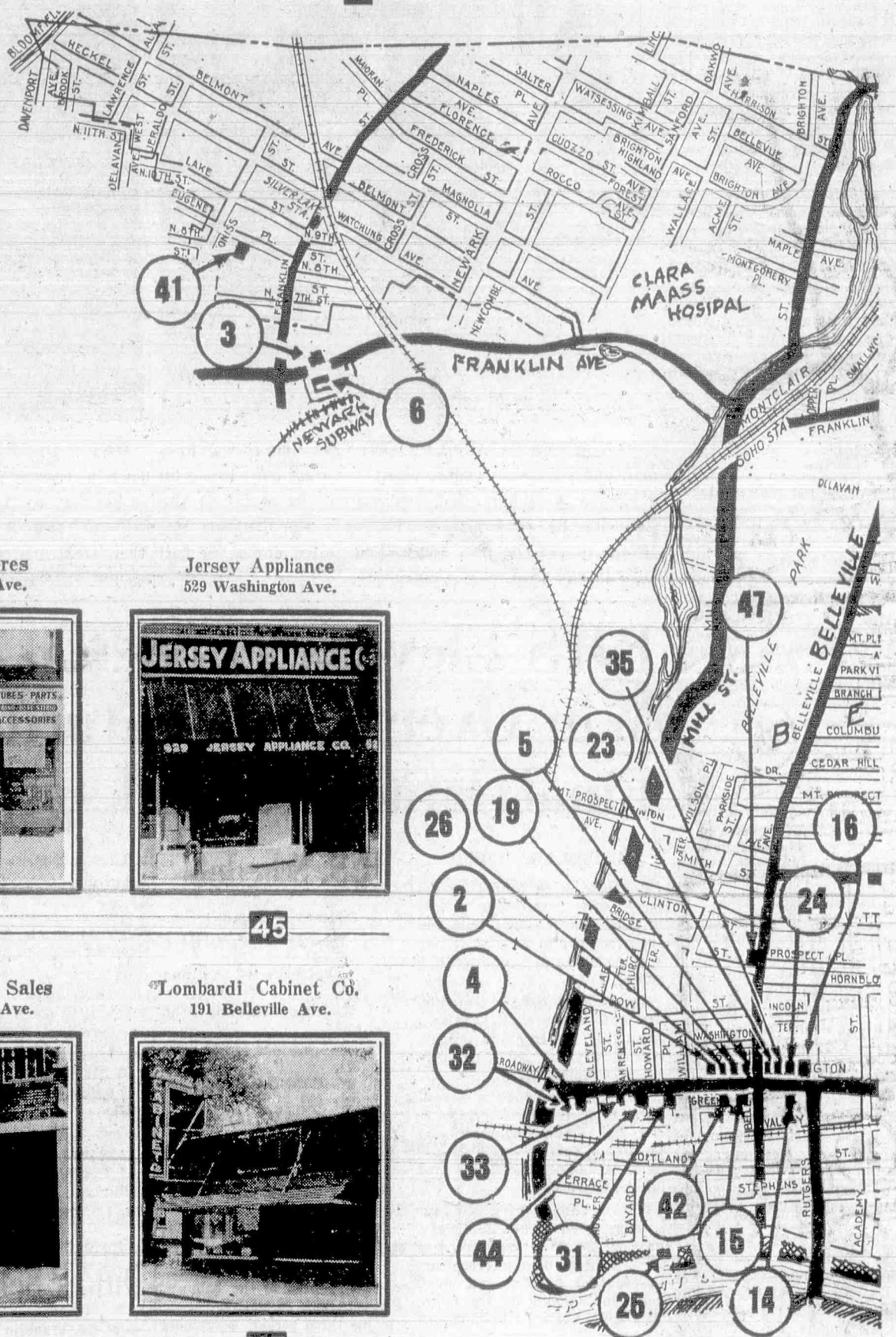
- Alterations**
MARY'S ALTERATION SHOP
- Automobiles**
46—Borgward — BLUE & WHITE SALES
18—Buick - Lark — BELLEVILLE-NUTLEY BUICK
33—Chrysler-Plymouth — BIGELOW MOTORS
- Auto Body and Fender Repairs**
38—NICOLETTE AUTO BODY WORKS
- Baked Goods**
7—GOECKLER'S QUALITY BAKERY
34—ZINICOLA'S BAKERS
- Cleaning-Pressing-Repairing**
12—JOLLY CLEANERS
- Department Stores**
40—THE BOSTON STORE
6—HARRY'S
- Donuts & Delicatessen**
9—BELLE MAID DONUT SHOP
- Drugs**
21—ABBOTT'S DRUG STORE
16—REED'S DRUGS
28—LATERZA'S DRUGS
- Electrical Appliances - TV**
45—JERSEY APPLIANCE
- Floor Covering**
3—THOMAS ANTONELLI FLOOR COVERING
- Florists**
1—BELLEVILLE ROSERY
- Foods**
24—ROYAL SHOP-RITE
- Footwear-Men's-Women's**
23—PAUL'S SHOE SHOPS
5—TANNEN'S SHOE SHOP
- Fuel Oil**
41—HILLTOP-RIVIERA OIL CO.
- Furniture**
31—CORDASCO FURNITURE CO.
32—PARISO BROS.
- Garden Center**
10—JO-LEE NURSERY & GARDEN CENTER
- Hardware**
2—TIBER HARDWARE
- Home Improvements - Alum. Siding**
14—KING OF BELLEVILLE
- Home Newspaper Delivery Service**
ED VAN DEMARK
- Jewelers**
22—W. T. HART
- Kitchen Cabinets**
47—LOMBARDI CABINET CO.
- Mattresses**
8—CUSTOM MATTRESS MAKERS
- Meats - Fruits - Vegetables**
43—GARDEN MEAT MARKET
- Men's Furnishings**
19—LOUAIRES MEN'S SHOP
35—DI BELLA MEN'S SHOP
- Music**
27—MUSCARA MUSIC CO.
- Optician**
15—WILLIAM C. SMITH
- Photographers**
36—KONDRECK PHOTOGRAPHERS
- Pizza - Free Delivery**
38—SENATORE'S PIZZERIA
- Radiator Repair**
25—LOGAN AUTO RADIATOR CO.
- Real Estate - Insurance**
20—C. A. ORECHIO & CO.
- Restaurant**
17—STEFANT'S DINER
- Roller Skating**
NEW BELLEVILLE RINK
- Rugs**
26—RUG SHOP
- Stationers**
42—THE CRESCENT PRESS
- Travel Service**
29—BELLEVILLE TRAVEL SERVICE
- TV Parts**
44—Televalue Stores (Siclori's)
- TV Repairs**
4—BELLEVILLE TV SERVICE
- U.S. Tires**
11—WALLACE TIRE & SERVICE
- Wallpaper - Paints - Glass**
30—THE GLASS CO.

If you can't find what you want in this directory, please turn to the classified pages.

The New Belleville Rink
701 Washington Ave.



13



Televalue Stores
74 Washington Ave.



44

Blue and White Sales
468 Washington Ave.



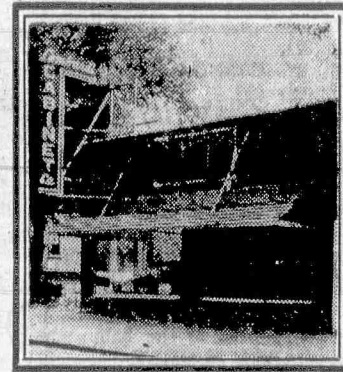
46

Jersey Appliance
529 Washington Ave.



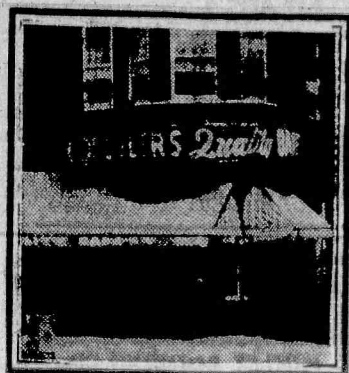
45

Lombardi Cabinet Co.
191 Belleville Ave.

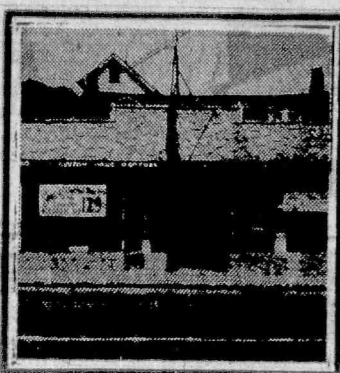


47

Goeckler's Quality Bakery
382 Washington Ave. cor. Joralemon



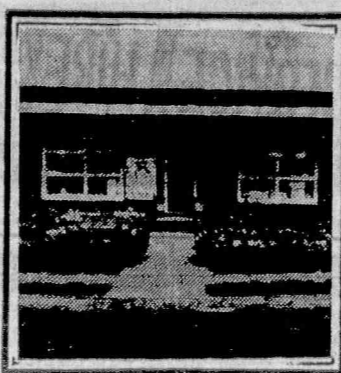
Custom Mattress Makers
85 Franklin Ave., Nutley



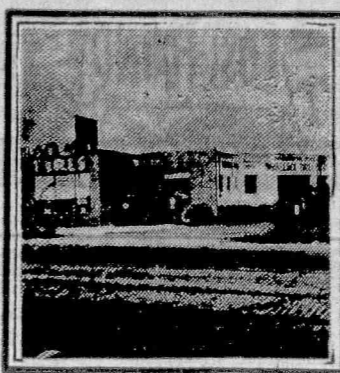
Belle Maid Donut Shop
460 Joralemon St.



Jo-Lee Nursery
183 Passaic Ave.



Wallace Tire & Service
709 Washington Ave.



Jolly Cleaners
300 Washington Ave.



Pariso Bros.
16 Washington Ave.



Who Is He? Where Is He?
Cooperating Merchant:
W. T. Hart



Ed Van Demark
162 Washington Ave.



King of Belleville
184 Washington Ave.



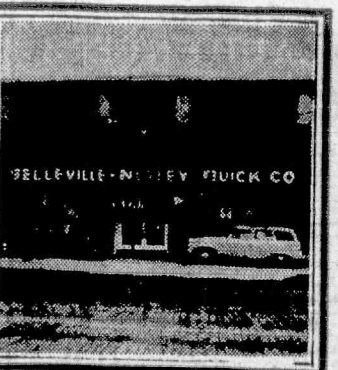
William C. Smith
140 Washington Ave.



Reed's Drugs
183 Washington Ave.



Stefano's Diner
Park Ave. and River Rd., Nutley

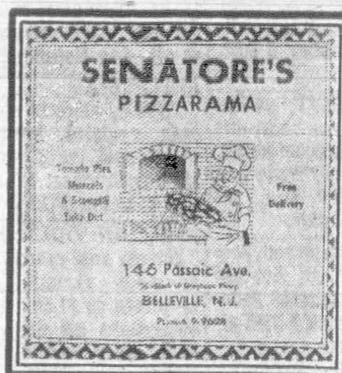


Belleville-Nutley Buick Co.
66 Washington Ave.



Louaires Men's Shop
187½ Washington Ave.

Senatore's Pizzeria
PL 9-9628



Nicolette Auto Body Works
177 Passaic Ave.



The Boston Store
538-540 Washington Ave.



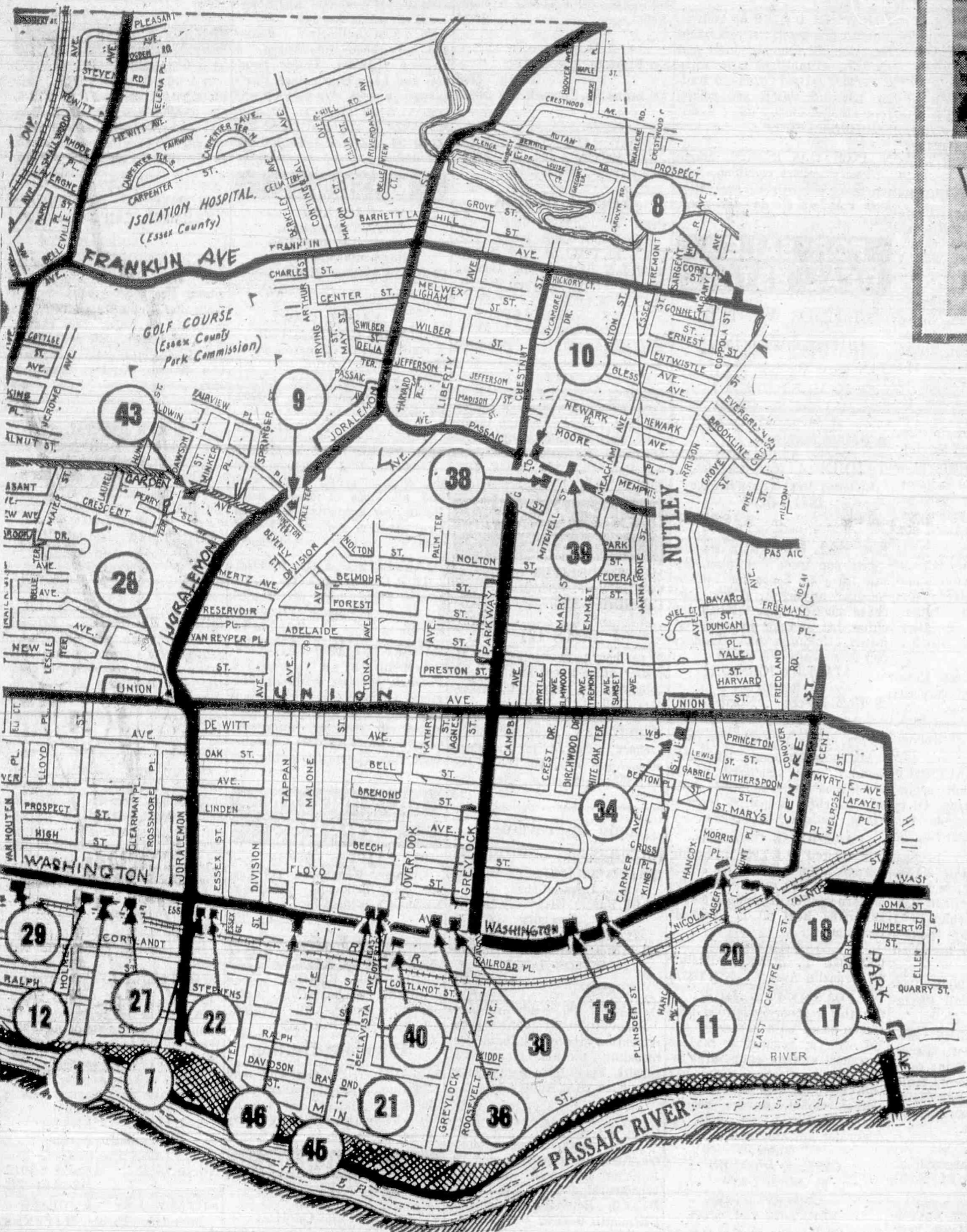
Hilltop-Riviera Oil Co., Inc.
46 Eugene Pl.



The Crescent Press
126 Washington Ave.



Garden Meat Market
166 Garden Ave.



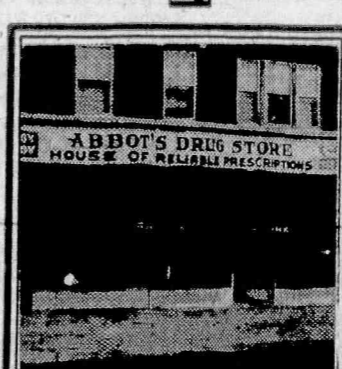
Royal Shop-Rite
169 Washington Ave



Paul's Shoe Shops
153 Washington Ave.



W. T. Hart
392 Washington Ave.



Abbott's Drug Store
531 Washington Ave.



Carl A. Orechio, Real Estate
43 Washington Ave.

WANT ADS
THE MARKET PLACE
OF MILLIONS

PL9-3200

TO RENT **LOST-FOUND** **for SERVICE** **TO HIRE** **BUY & SELL** **TO TRADE**

YOU'LL FIND IT IN THE WANT ADS!

WANT ADS
THE MARKET PLACE
OF MILLIONS

PL9-3200

CLASSIFIED ADVERTISING

Adv. will appear in The Nutley Sun and
Belleville Times-News

Over 56,000 Readers

25 WORDS OR LESS
Each Additional Word 8c

25 WORDS OR LESS THREE TIMES
Each Additional Word 16c

Annual Rate 1.25 Per Week

Ads Must Be In By 12 Noon Tuesday

Card of Thanks

I WISH TO THANK the Nutley Police Department and Ambulance Squad for their prompt and efficient aid. Also friends and neighbors for their kind expressions of sympathy at the death of my husband, GEORGE R. BUCHWALD. Thanks, too, to the American Cancer Society, F. A. MacKenzie Post No. 165 of Bayonne and the Nutley Visiting Nurse Association.

MRS. LOUISE M. BUCHWALD
(Wife)

AGRICULTURE

SCREENED TOP SOIL — FILL — Excavating, landscaping, sodding, land clearing. Let us solve your drainage problem. Trenching, bulldozing, and truck rentals. Armando Vocaturo - telephone PL9-6640.

3-6-58 TF

Announcement

PLAZA LAUNDROMAT — (Pick-up and Delivery Service). Same day service. North 7-2105. 238 Centre Street, Nutley. 10-13-60

ATTENTION! For that new look in clothes, call **PLAZA FRENCH CLEANERS**, 250 Centre Street, North 7-2105. Same Day Service. Free mothproofing. 4-23-59 TF

ANSWERING SERVICE

24 HOUR TELEPHONE ANSWERING SERVICE. Call for information for special services, including WAKE UP, VACATION and MAIL address. Weekly or monthly rates. PL 9-7500. 12-10-59 TF

AUTO SERVICE

COLLISION SPECIALISTS STRAIGHTENING, PAINTING, lacquer, enamel, lucite, electric welding, chassis work, fibre glass work. **AL'S RIVERSIDE BODY & FENDER WORKS**, 221 Valley Street, Belleville. PL 9-1162.

12-17-59 TF

SPECIALISTS: IGNITION, MOTOR TUNE-UP, Carburetion. VerStan, 197 Franklin Avenue (near Center) — Distributors for **LECTRA Fuel Igniters**. Open weekdays till 7 P.M., Saturday 6 P.M. Telephone North 7-0286.

3-26-59 TF

SPECIALIZING IN AUTOMATIC transmissions. General auto repairs. Jim Paiva's Auto Service. Corner Streets & Terry St., Belleville. PL9-0017.

3-31-60TF

CARPENTERS AND BUILDERS

A. PHILIP Carpenter — Builder Alterations North 7-3351
373 Bloomfield Ave. Nutley 2-26 TF

A. COLLINS — Carpenters and Builders. Kitchen, Attic, Basement remodeling. Roofing and Siding. Also Aluminum combination storm doors and windows. All work covered by insurance. Established 1939. North 7-0730.

1-21-60TF

LINDSTROM BROTHERS, shop, 311 Broad Street, Bloomfield. Roofing, overhead doors, breezeways, porches, screens, general home maintenance, kitchen cabinets, alterations, additions. Free estimates. Telephone NO 7-8299 or NO 7-7243.

4-21-55 TF

ALTERATIONS AND REPAIRS, remodeling, roofing, siding, dormers, porches, finished recreation basements. Free estimates. Call Peter Di Petta, NO 7-2751.

7-17-58 TF

CHILD CARE

BABY SITTER, DEPENDABLE BRETON NURSERY SCHOOL, certified. Children two to six. Planned program, hot lunches. Half day and all day sessions. Transportation. Telephone North 7-6311, 255 Nutley Avenue. 8-25-60 TF

BABY SITTER, DEPENDABLE, MATURE WOMAN. EVENINGS, MORNINGS, AFTERNOONS. TELEPHONE NORTH 7-6174. 12-8

BABY SITTER — Dependable, available weekends and week-day nights. Telephone North 7-7168 after 4 P.M. TF

DECORATORS PAINTERS

DOES YOUR HOUSE NEED PAINTING? John Graczyk, General Contractor. Interior and exterior painting. Fully insured. Free Estimates. Telephone NO 7-4459. 7-30-59 TF

INTERIOR AND EXTERIORS PAINTING by a reliable contractor. Colorings painted. Estimates cheerfully given. Call Mr. Whitaker, 680 Franklin Avenue. — NO 7-6040. 8-25-60 TF

PAINTER-PAPERHANGER Interior — Exterior — 25 Years Experience First Class Guarantee NUTLEY REFERENCES Immediate Service — Low Price PRescott 3-9576 3-31-60TF

PAINTING & DECORATING — Quality work — Reasonable prices, 32 years exp. Fully insured. Only the best materials used. No job too small. Sweeney & Son, Plymouth 9-9585. TF

SPECIAL — I will hang the paper in any average size room for only \$8.95. D. D'EMILIO, 12 Brown St. Telephone North 7-9325. TF

ALTERATIONS Block & Acoustic Ceilings Painting & Paperhanging (Home & Industrial) WYman 1-8754 2-18-60TF

JOHN MISCIA, PAINTER AND DECORATOR. Also paperhanging. Estimates cheerfully given. Fully insured. Telephone North 7-6789. 7-21-60 TF

GUY SYPHER - DECORATOR — Painting, Paperhanging, Reasonable prices. 170 Linden Avenue, Belleville. Call PL 9-0671. 9-8-60TF

EWALD TORNIEPORTH, INC. PAINTING & DECORATING of the better grade We give quality and service 10 Jerome Ave., Belleville, N. J. Plymouth 9-1285 9-22-60-TF

BROOKLINE DECORATORS — Interior & Exterior Painting, Paperhanging & Repairs. Plymouth 1-1448 after 4 P.M. 11-24

ELECTRICIANS ALL TYPES of electrical work done. All work guaranteed. Telephone North 7-0140. Bill Marcase, 22 Hopper Avenue. 1-20-55 TF

FRED M. SMITH LICENSED ELECTRICIAN Power & Light Wiring Residential — Commercial — Industrial Pole & Line Construction NORTH 1-1443 7-21-60 TF

GEORGE H. HEWITT & SON Electrical Contractors Successors to Harold Kane North 7-0056 21 Hamilton Pl. 10-15-53 TF

DO YOU HAVE ENOUGH CURRENT in your home? 220 Volts 60-80-100 Amp. service line installed. George Mc Donough. Telephone North 7-8272. 7-24-58 TF

CALL US FOR PROMPT and complete electrical service. D. & D. Electric, 39 Ralph Street, Belleville. Telephone PL9-1282. 7-17-58 TF

7-17-58 TF

ELECTRICIANS

BELLO'S ELECTRIC SERVICE. Complete home wiring. Alterations and repairs. We specialize in 100 Amp. 220 line. PL 9-7964. Call anytime for free estimate. 1-14-60TF

LIVE BETTER ELECTRICALLY with full housepower. For free estimate phone Larson's Electric Service, 659 Belleville Avenue, Belleville. 24 hour Answering Service. Plymouth 9-9262. 8-2-57 TF

FOR RENT

STORE FOR RENT Busy location next to post office. 450 square feet plus 2 large windows - additional rear space available. Ideal for any type business - reasonable rent. North 7-0007. 11-17

4 1/2 ROOM GARDEN APARTMENT overlooking Nutley Park. One block to shopping and buses. Call Superintendent. North 7-3863. 11-10

FOUR ROOMS AND BATH, heat furnished. Rent \$70 a month. Ready December 1st. Plymouth 9-8239. Belleville.

THREE FURNISHED ROOMS: bedroom, living room and kitchen; for couple or business woman; 3rd floor; NO. 7-1206 11-24

TWO ROOMS, UNFURNISHED, third floor. Heat furnished. Horbelt, 392 Lincoln Avenue (near Verona Avenue) Newark. 11-17

WOMAN WOULD LIKE another woman to share apartment in Belleville. Can rent bedroom or share entire apartment. With or without meals, furnishings. Plymouth 9-2075. 11-24

FOUR ROOMS with hot water all year around. Steam heat. Telephone North 7-3264 after 3 P.M. 11-24

THREE AND A HALF ROOMS, heat and hot water. Excellent transportation. Business couple only. Available January 1st. Telephone North 7-0493 after 6 P.M. 12-1

3 ROOM APARTMENT, available immediately; one bedroom; ideal for single person or couple. Air-conditioner. \$75.00. White Box 40, c-o The Nutley Sun, 386 Franklin Avenue, Nutley. TF

FOUR ROOMS, unfurnished. Second floor, with heat, hot-cold water. Rent \$85. Available January 1, 1961. Plymouth 9-3326 after 5:30 p.m. 11-24

THREE ROOMS for rent. Business woman only. Call evenings North 7-7351. 11-24

THREE FURNISHED ROOMS, TV, one block to local and New York buses. Business couple or two women. Available immediately. Telephone Plymouth 9-0640. 11-24

FLOORS Sanded, Refinished, cleaned and waxed. American Floor Sanding Company, Lyndhurst. George Inglis. Telephone Geneva 8-8127. 2-9-61 TF

Floors Laid, Sanded, Finished. Cleaned, Waxed, Polished For Better Work Call IVAR BRANDSTEDT North 7-0327 185 Coeyman Ave. TF

FOR SALE LAMPS, FIXTURES REPAIRED.

Lamps from vases, etc. Lamp parts, shades, bases. Bargains in Driftwood & custom lamps; Fluorescent fixtures, Circulines, fluorescent lamps & parts, Shoplite, 650 Franklin Ave., North 7-6021. Until 7:30 p.m. 12-1

BELL STEREO AMPLIFIER. Model 3030. Cost \$149.95. Sell for \$85. Used one month. Telephone North 7-2826. 12-1

RUG, 12' x 16' (bound), nutria broadloom, Coral Lawson sofa, maple coffee table, Kelvinator refrigerator. Telephone North 7-6541. 11-24

CUSTOM MADE CONTEMPORARY two piece sectional couch. Foam rubber reversible cushions. Perfect condition. Fraction of original cost. Telephone North 7-9531. 11-24

EIGHT PIECE MAHOGANY DINING ROOM SET. Call after 6 p.m. Plymouth 9-6337. 12-1

SERVEL GAS REFRIGERATOR, good condition. \$15. Telephone North 7-6333. 11-24

CRIB, BOX SPRING MATTRESS. Excellent condition. Cheap. Also high chair. Telephone North 7-2057. 11-24

WINDOW AND PORCH STORM SASH. Very reasonable. Bring measurements. Also free screen. Telephone North 7-2885. 11-17

11-17

FOR SALE -

\$3—Have your roof, gutters leaders and flashings inspected. Any small, minor repair included. Aluminum combination windows and doors. General home maintenance. Please call before 8:30 A.M. or after 6 P.M. T. K. Oakes, North 7-2564 4-3-58 TF

AFRICAN VIOLETS — Gift plants \$1.50 — \$2.50. Small plants 50c and 75c. Special rates to clubs and organizations. Doris's African Violet Corner, 308 Franklin Street, Bloomfield. Telephone Pilgrim 8-5485. Open 11-17

USED DESKS, \$15 & UP. Filing cabinets, chairs and tables. Edelstein Office Furniture Warehouse, 200 Montgomery Street, Paterson, N. J. Lambert 3-6153. 5-26-60TF

RUGS — NEVER USED. Sacrifice to settle estate. 9 x 12, \$30; 9 x 15, \$35. Other sizes. GE vacuum, \$20. Also some wool hooked and braided rugs. Call Fulton 8-2028. 12-1

FOOD SALE — Saturday, November 19 - 9 a.m. to 4 p.m. American Legion Headquarters, 507 Franklin Avenue, Nutley. Cakes, pies and salads. Coffee Shop open for refreshment. 11-17

R O Y A L TYPEWRITER with magic margin, 18" carriage. \$50. Also Underwood standard \$20. Please phone North 7-4663 evenings. 11-17

WAREHOUSE FURNITURE: Beautiful 9 piece Duncan Phyfe dining room, \$179; 5 piece oak dinette, \$25; oak china closet, \$30; rock maple buffet, \$30; 7 piece modern bedroom set, \$89; walnut dresser, \$25; beds, \$10; springs and mattresses, \$5 each; mahogany tea wagon, \$25. Grand Rapids Furniture, 300 Monroe Street, Passaic. PRescott 7-7920. 12-1

CORDEUROY SKATING SKIRT with panties to match, size 10-12. \$2. Top cash register, \$1. Telephone North 7-1449 after 6 P.M. or all day Saturday and Sunday. 12-1

ARTIFICIAL CHRISTMAS TREE, electric steam radiator, cash register, knitting machine, roller and ice skates and shoes, air conditioner, fans, chairs, etc. Call Edison 8-1715. 11-17

AFRICAN VIOLETS. My fall selection now ready. Features many new varieties priced from 75 cents to \$1.50. Open evenings, Saturdays all day. E. A. Alley, 49 Daily Street, Nutley, North 7-0362. 12-1

CLARINET, Selmer Bundy Resonite. Like new. Used very little. Excellent opportunity for school band or private user. Bargain at half price. Telephone North 7-4031. 12-1

ANTIQUE SATIN LAVENDER COUCH, green club chair, green leather torch lamp. All in good condition. Reasonable. Telephone Plymouth 9-1305. May be seen evenings. 12-1

ONE 30 GALLON FISH TANK and all accessories, including stand. One set of American People's Encyclopedia, volumes 1 through 20, plus year books—1954 through 1959. Like new. Call North 7-0614. 12-1

RCA GAS RANGE. White Forman Goven, size 9. Call Plymouth 9-9991. 12-1

FIVE PIECE CHERRY MAHOGANY BEDROOM. Mirror, bedspread, two piece living room sectional, club chair, lamp table, two fireside chairs, 2 side chairs, drapes. Good condition. Reasonable. Plymouth 1-1701. 12-1

FREEZER 16 cubic feet, two door upright. No reasonable offer refused. Telephone Plymouth 9-2481. 12-1

1955 FORD four door Custom-line V8, standard. Radio, heater, new tires (2 snow), new battery. Clean inside and out. Very good condition. \$375. Telephone Plymouth 9-7457. 11-17

WELL ROTTED COW MANURE By the load. \$20 per load. Bonny Dell Farms. Telephone WEBSTER 9-6109. 11-3-60 TF

COOKWARE — SACRIFICE to settle estate of former dealer. We have a very limited supply of stainless steel waterless cookware. Regular value \$149.50. Sacrifice \$39.50. Fulton 8-2028. 12-1

EXCELLENT TRANSPORTATION — 1949 Chevrolet four door sedan, radio, heater. Clean and mechanically sound. \$99. Can be seen at 35 Chadwick Drive, Nutley, or call North 7-7187. 11-24

SOLID MAPLE DOUBLE COLORED roll-in bed with springs; folding roll-in way cot, innerspring mattress. Excellent condition. Reasonable. Call North 7-3877 before 5 P.M. 11-17

LIVING ROOM SOFA and matching chair. Club style. Very good condition. New slip covers. \$50. Telephone North 7-8411. 11-17

11-17

FOR SALE

SAVE ON FLUORESCENT FIXTURES — INCLUDE BULBS 22 watt Circulines — \$5.57 32 watt Circulines — \$8.51 22-32W. Instant start — \$11.95 1 lite 40 watt (48") — \$4.95 15 watt (18") chrome — \$3.75 6, 9 & 12 inch Midegits — \$4.95 Others 6 to 48" long. Fixtures repaired. Parts and ballasts. Until 7:30 pm. North 7-8021. SHOPRITE, 650 Franklin Ave. 11-17

BUICK 1953 Roadmaster four door. Radio, heater, power steering, new whitewall tires. Good V8 engine. \$295. Telephone North 7-8411. 11-17

VARIED GIFT ITEMS. Bracabr old and new. Drum tables, mahogany pedestals, marble tops. Books, records, frames. National Geographic, etc. Very reasonable. North 7-8708. 11-24

STORMS AND SCREENS. wood- assorted sizes. Good condition. North 7-1394. 12-1

FOR HOME OWNER or builder — new large noiseless ventilating fan, with all controls, ducts and shutters, suitable for attic, store or factory. — Used 1/4 ton car trailer, 150 cold chisels and points, ropes, pulleys — many other items. Call North 7-6335. 11-17

36 INCH GAS RANGE, Magic Chef, excellent condition. Asking \$50. Call North 7-6945 after 6:30 P.M. or all day on week ends. 11-17

FOR SALE - REAL ESTATE

LISTINGS WANTED! BUYERS WAITING!

WHY DO WE SELL SO MANY HOMES? Because I am the largest holder of Second Mortgages to finance purchases. GIVE ME A RING. **JOHN J. McGRANE** Licensed Real Estate Broker NO 7-3231 7-16-59 TF

BUY SELL OR TRADE investigate our trade - in plan. We will list your house for sale or consider buying it, if you purchase another house through our office. Let us know your requirements. Evenings and Holidays call Mrs. Kelly WE 9-3922. **STANLEY JOHNSON** Realtor 28 High Street North 7-8000 3-10-60 TF

BRICK AND FRAME COLONIAL. AL, three bedrooms, 1 1/2 baths, laundry room, enclosed porch. Chain link enclosed yard. Vicinity Radcliffe School. 88 Howard Place, Nutley. North 7-2830. 12-1

FARMHOUSE COLONIAL Now offered at \$17,900, in Spring Garden School district on 75x128 lot, 6 charming rooms, tile bath, modern kitchen, large open porch, automatic heat all in excellent condition. Everyone Knows. **GEORGE T. BOWES, Realtor** 677 Franklin Ave., NO. 7-3376 11-17

FOR THE EXECUTIVE See this 5 room Hollywood type stucco home on a corner lot 90x100 with a completely modern basement and recreation area including tile flooring, glass bar with hot and cold water, large clothes closet, storage rooms, kitchen facilities, gas range, refrigerator and freezer. Phone **CARL A. ORECHIO** at North 7-4000 11-17

NUTLEY PARK PRESTIGE COLONIAL Pass 472 Passaic Avenue. Living room, dining room, enormous tile kitchen, powder room, 3 master bedrooms, cedar walk-in closets, tile bath, stall shower, recreation room, garage. \$31,900. ED 8-8711. Walter Murphy **BROOKWOOD REALTY CO.** 12-1

THE LATHAM HOUSE — Large rooms near bath, with shower. Parking space. 144 Whitford Avenue (corner Nutley Avenue.) Telephone North 7-3556. 7-30-59 TF

FURNISHED ROOMS AVAILABLE at Kai's Guest House, 116 Harrison Street (off Franklin Avenue). Men only. 1-16-58 TF

If you can't find what you want in the classified section please turn to the "map page" directory. 11-17

LARGE COMFORTABLE ROOM adjoining bath. Private home. Convenient to transportation. Telephone Plymouth 9-3794. 12-1

FURNISHED ROOMS MEN'S SLEEPING ROOMS. Convenient to New York and Newark buses. Across street from diner. Private entrance. 432 Centre Street, Nutley. North 1-1465 after 6 P.M. 11-24

LARGE COMFORTABLE ROOM adjoining bath. Private home. Convenient to transportation. Telephone Plymouth 9-3794. 12-1

HELP WANTED LANE EMPLOYMENT AGENCY Announcing opening of a new branch for your convenience. ACCOUNTANTS ENGINEERS OFFICE PERSONNEL 11-17

HELP WANTED FEMALE SALES CLERK, steady position, 40 hour week. Good salary. Apply in person only. Gantner's Hardware, 160 Franklin Avenue, Nutley. 11-24

WOMEN: Light machine work. Thor Ceramics Inc., 225 Belleville Avenue, Bloomfield. 12-1

YOUNG WOMEN Press or conveyor line work. Will train. Short hours. 3:20 P.M.-7:20 P.M. or 7:50 P.M. - 11:50 P.M. Interviewing Monday through Friday between 1 P.M. and 5 P.M. only. **THE GREAT A&P TEA CO., INC.** 265 Cortlandt St. Belleville 11-17

TWO valuable territories for AVON COSMETICS now open in Nutley the next 3 days. Average to \$10 daily, part time. Earnings begin at once. Exclusive Christmas Gift Line. Call Mrs. Marx, Mitchell 2-5146 for FREE Booklet. 11-17

HELP WANTED MALE MAN TO DELIVER orders and work in store. 42 hours a week. Call North 7-2470. 11-17

11-17

FURNISHED ROOMS

MEN'S SLEEPING ROOMS. Convenient to New York and Newark buses. Across street from diner. Private entrance. 432 Centre Street, Nutley. North 1-1465 after 6 P.M. 11-24

LARGE COMFORTABLE ROOM adjoining bath. Private home. Convenient to transportation. Telephone Plymouth 9-3794. 12-1

HELP WANTED LANE EMPLOYMENT AGENCY Announcing opening of a new branch for your convenience. ACCOUNTANTS ENGINEERS OFFICE PERSONNEL 11-17

HELP WANTED FEMALE SALES CLERK, steady position, 40 hour week. Good salary. Apply in person only. Gantner's Hardware, 160 Franklin Avenue, Nutley. 11-24

WOMEN: Light machine work. Thor Ceramics Inc., 225 Belleville Avenue, Bloomfield. 12-1

YOUNG WOMEN Press or conveyor line work. Will train. Short hours. 3:20 P.M.-7:20 P.M. or 7:50 P.M. - 11:50 P.M. Interviewing Monday through Friday between 1 P.M. and 5 P.M. only. **THE GREAT A&P TEA CO., INC.** 265 Cortlandt St. Belleville 11-17

TWO valuable territories for AVON COSMETICS now open in Nutley the next 3 days. Average to \$10 daily, part time. Earnings begin at once. Exclusive Christmas Gift Line. Call Mrs. Marx, Mitchell 2-5146 for FREE Booklet. 11-17

HELP WANTED MALE MAN TO DELIVER orders and work in store. 42 hours a week. Call North 7-2470. 11-17

HELP WANTED FEMALE SALES CLERK, steady position, 40 hour week. Good salary. Apply in person only. Gantner's Hardware, 160 Franklin Avenue, Nutley. 11-24

WOMEN: Light machine work. Thor Ceramics Inc., 225 Belleville Avenue, Bloomfield. 12-1

YOUNG WOMEN Press or conveyor line work.

SERVICE
PASSAIC PRIVATE NURSING
HOME, for chronically ill, convalescent and bed-ridden; male and female; day and night nurses. Telephone PRescott 9-9028.
2-9-56 TF

A-1 PIANO TUNING
Repairing and polishing; players a specialty. Factory expert since 1910. All work guaranteed. Giglio, 205 Forest Street, Belleville, telephone PLymouth 9-2614.
2-26-53 TF

If you can't find what you want in the classified section please turn to the "map page" directory.

TELEVISION
TELEVISION REPAIRS - All Video Service, 31 Holmes St., Nutley. North 1-1253 weekdays after 5:30 P.M., all day Saturday, Sunday. Repairs and good will guaranteed.
5-5-60 TF

Upholstering
SLIP COVERS - reupholstery, new upholstered pieces of any samples. Nicholas Spirk, 421 workmanship, wide variety of Franklin Avenue. Telephone North 7-2529.
TF

KITCHEN AND DINETTE SETS REUPHOLSTERED
in modern plastic, classic pattern. Jerry Alkott, Telephone North 7-0440.
1-23-53 TF

WANTED TO BUY
DO YOU HAVE old gold jewelry you no longer use? We buy gold, platinum, diamonds, dental bridgework etc. Lane Jewelers (at the Center), North 7-4466.
4-2-59 TF

CLEAN WHITE RAGS. Large pieces, no buttons or other fasteners. 10 cents per pound. Bring to The Nutley Sun, 388 Franklin Avenue.
TF

OLD GUNS, SWORDS, AMMUNITION, MILITARY ITEMS including books, uniforms, knives. Telephone Gilbert 4-6252.
11-24

WATCH REPAIR
SAVE 30 PER CENT
Your Watch Cleaned, Oiled, Adjusted, Guaranteed 1 Year with New Crystal or Crown if needed.
\$4.95
We Restore All types of Clocks
QUALITY WATCH COMPANY
59 Hillside Crescent, Nutley.
Free Pickup, Estimate, Call North 7-1768

WORK WANTED
IMPROVE YOUR PROPERTY
New sidewalks and repairing. New lawns and repair. All labor work and trucking. V. Sampaio, 79 Garner Avenue, Belleville, N. J. Telephone, PLymouth 9-5859.
TF

ODD JOB SERVICE. Cellars, attics and yards cleaned. Junk and rubbish removed. Telephone Pilgrim 4-3264.
3-12-59 TF

PAINTING done at reasonable rates. North 7-4671.
11-24

WORK WANTED
RELIABLE WOMAN, Irish-American, honest, experienced, for general housework, wash day's work, including holidays. Telephone HUmboldt 4-8188.
8-18-58

WOMAN WISHES DAY'S WORK, five days a week. Telephone North 7-0964.

HANDY MAN WILL DO ANY ODD JOBS - Wash windows, clean cellars, clean yards, put up storm windows, etc. Telephone PLymouth 9-9626.
11-24

Sweet Adelines To Sing At West Caldwell Home
The West Essex Chapter of Sweet Adelines, Inc., national women's barbershop-style singing organization, will sing for the patients and staff of the Canfield Memorial Home, Westville Avenue, West Caldwell, today, Thursday.
The Chapter also sang for members of the Roseville Masonic Temple, Newark, on November 4. The Chapter meets every Thursday evening at the Central Presbyterian Church, Park Street, Montclair. Anyone wishing to join the group is asked to contact Tillie Wisecarver, 56 Cathedral Avenue, or Irene Hooper, 324 High Street.

Holy Family Rosarians Have Gay 90s Dance
The Fall "Gay Nineties" dance sponsored by the Rosary Altar Society of Holy Family Church was held Saturday evening, November 12, in the school gymnasium. Music was furnished by Carl Lombardi and his orchestra, with intermission entertainment by the Rosarians.
Mrs. Fred Nixon was chairman and Mrs. Frank Cocchiola, co-chairman. Proceeds went toward the church building fund.

Couples Club Will Hear Talk On United Nations
St. Paul's Couples Club will have a dinner meeting Saturday evening, Nov. 19, at the parish house. Mr. and Mrs. Henry Heigis' group will be in charge.
Mrs. L. R. Zocca of Chestnut Street will speak on economic and social activities in the UN. A question and answer period will follow.

O.R.T. Sabbath At Temple Menorah Friday
O. R. T. Sabbath will be observed in conjunction with the Sabbath services to be held at Temple Menorah, Bloomfield, tomorrow, Friday, at 8:30 p.m., in the new Sanctuary. Rabbi Nathan H. Fish, spiritual leader, will conduct the services.
Mrs. Samuel Levine of Union, vice president of the North Central Jersey Region, O. R. T. (Organization for Rehabilitation through Training, a world wide organization), will be guest speaker following the worship services.

Hospital Guild Meets
The monthly meeting of the Guild of Babies' Hospital, a unit of the United Hospitals of Newark, will be held at the home of Mrs. Albert Vreeland, 438 Ridgewood Avenue, Glen Ridge, on Monday, November 21, at 12:45 p.m. Mrs. Norman Brassler will preside and the members of the Guild will work on "Ollie" hand puppets for the children of the hospital.



ROCCO LIUZZI
The election of Rocco Liuzzi of Nutley as president of Preferred Realty Board of Bloomfield, Glen Ridge, Nutley and Belleville was reported in this paper last week. Active in real estate circles for 15 years, Mr. Liuzzi is a charter member of the organization he has been chosen to lead.

D.A.R. Meets Tonight, Will See Travelogue
The Evening Group of the Major Joseph Bloomfield Chapter, Daughters of the American Revolution, will hold its monthly meeting tonight, Thursday, at 8 o'clock at the Bloomfield Civic Center.
Miss Helen Hunt of Glen Ridge, chairman, will preside at the business meeting. She will be assisted as hostess by Mrs. Betsy Vaughan of Bloomfield.
A feature of the evening will be an illustrated travelogue presented by Miss Elsa Pilger of Verona. Miss Pilger spent nine months last year on a world tour.

Benefit Dinner Dance For Retarded Children
The Mt. Carmel Guild Special Education Department will sponsor a dinner-dance and stage show at the Meadowbrook, Cedar Grove, Wednesday evening, November 30 at 6:30 o'clock. The affair will be held for the benefit of St. Philip's School for Retarded Children, Newark.
Mr. and Mrs. Louis Crescenzi of Verona, formerly of Nutley, are general chairmen.

C. Bauer Named Division Head
Sun Chemical Corporation recently announced the appointment of Carl Bauer of Whitehouse Station as vice-president and general manager of the Chemical Coatings Division located at 57 East Centre Street, Nutley.
Mr. Bauer replaces Henry A. DePhillips, who has been appointed director of planning and research for Sun Chemical Corporation in New York City.
On graduation from Munich Polytechnic Institute in Germany Mr. Bauer began his career in 1935 as a chemist at Cloverleaf Paint & Varnish Co. in Long Island City. Later he became a chemist at Standard Toch Varnish Co., Staten Island, advancing to technical director, vice-president, executive vice-president and president.

Alumni Group To Honor National President
The Northern New Jersey Alumni Chapter of Mt. St. Mary's College, Emmitsburg, Md., will tender a testimonial banquet to John R. Morgan, LL.D., president, National Alumni Association, Friday evening, November 25. Final arrangements for the affair, which will be held at the Kingston Restaurant, Union, were announced at the Chapter's monthly meeting, November 4.
Guests will include Rt. Rev. Msgr. John L. Sheridan, College president and Rev. Hugh J. Phillips, executive secretary, National Alumni Association.

Workshop For Christmas Gift Making Slated
The bustling activity and gay expectations of the Christmas season are rapidly approaching. Children especially look forward to Christmas, its decorations and gifts. Parents can help their youngsters enjoy the full meaning of the holiday season by giving them the pleasure of making simple gift items and decorations for their individual trees.
To help groups planning a family Christmas program, the Essex County Home Economics Extension Service will hold a workshop meeting for leaders of groups who wish to have this

material to take back to their organized groups. The groups may be local PTAs, church, youth or recreational organizations.
Miss Shirley Johnstone, Essex County Home Agent will hold an all-day meeting tomorrow, Friday, from 10 a.m. to 3 p.m. at the Essex County Extension Service Workshop, 25 13th Avenue, Newark, (Hall of Records).
At the Children's Christmas Meeting workshop, adults will learn how to make decorations and gift items that will be easy for children to copy.

Essex Unit For Retarded To Hear Past President
Mrs. Fitzhugh W. Boggs, immediate past president of the National Association for Retarded Children, will be guest speaker at the monthly membership meeting of Essex Unit, N. J. Association for Retarded Children, to be held tonight, Thursday, at 8:30 p.m., at Post 73, American Legion Hall, 25 No. Munn Avenue, East Orange.
Her topic will be "News and Views on Mental Retardation in Europe and the United States." Mrs. Boggs has recently returned from a trip to Europe and has taken many interesting slides

of the facilities in Sweden and Holland. A national authority on mental retardation, she will compare the services in Europe with those in the United States.
Her presentation will highlight the fact that the national retarded children's drive is now underway and will continue through the month of November. The public is invited.

Ex-Stewardesses Meet
The November meeting of the Eastern Airlines' Silverliners (ex-stewardesses) will be held tonight, Thursday, at 8:30 o'clock at the home of Mrs. Raymond Del Tufo of Newark. The principal speakers will be Mrs. Thomas A. Brown of Iselin and Mrs. Henry P. Stoehr of Clifton who will discuss their airline careers. Refreshments will be served by Mrs. Lote B. Kinney of Nutley and her committee.
Eastern Airlines' ex-stewardesses interested in joining the group are asked to contact the membership chairman, Mrs. David Hofer, of 425 Ridge Road, North Arlington.

N.C.C.W. Will Meet In St. Aloysius Church
The Essex-Montclair District of the National Council of Catholic Women, of which Mrs. Joseph A. Reilly, of 7 Tennis Place, is president, will meet Monday evening, November 21, at St. Aloysius Church, Caldwell, with members of St. Aloysius Rosary Altar Society as hostesses. Rev. Patrick F. Joyce is pastor of the Caldwell church, and Rev. Joseph A. Beggans is N.C.C.W. moderator.
Members of the Rosary Altar Society will present a play, "The Purple Knob," and Mrs. Joseph Kane of Nutley will tell of lay work being done for the Missionary Servants of the Most Blessed Trinity. Mrs. Reilly will report on the recent N.C.C.W. national convention in Las Vegas.

Ohio man who drank 45 cups of coffee a day died at 95. So coffee, it seems, does not keep one awake indefinitely.
-The State Journal, Lansing, Mich.
Isn't it odd that a girl afraid of a mouse will accept a date with a wolf?
-The Prop Wash, Oak Harbo, Wash.

FREE!
100 S&H GREEN STAMPS
In addition to your regular stamps with purchases of \$10.00 or more and coupon at right. Coupon expires Sat., Nov. 26th.



- Frosted Foods**
- Fancy Large Shrimp 1 lb. 89c
 - Pot Pies Farmdale - Beef, 8-oz. 89c
 - Green Beans Birds Eye 5-9-oz. 89c
 - Vegetables Birds Eye 5-10-oz. 89c
 - Libby Peas 6-10-oz. \$1.00
 - Potatoes Mrs. Paul's 2-12-oz. 55c
 - Morton Biscuits Southern 12-oz. pkg. 27c

- Fruits and Vegetables**
- Emperor Grapes 2 lbs. 29c
 - White Boiler Onions 2 lbs. 25c
 - Golden Sweet Potatoes 3 lbs. 19c
 - Cranberries Cape Cod 1-lb. pkg. 15c
 - Chestnuts Imported Italian 2 lbs. 25c
 - Pitted Dates Genuine Hawaiian 1-lb. 39c
 - California Figs 32-oz. pkg. 39c
 - Fruit Salad Fresh Chilled Citrus quart 59c
 - Dessert Topping Lucky Whip 9 1/2-oz. can 39c

ACME GOOD WILL COUPON
Worth **100** Free S&H Green Stamps
In addition to your regular stamps with the purchase of \$10 or more and this coupon. Coupon expires November 26th.
Get 500 Green Stamps at all ACME SUPERMARKETS
ACME GOOD WILL COUPON

- Lancaster Brand Oven Ready TURKEYS**
- 20 lbs. and up **39c** lb.
 - 17 to 20 lbs. **41c** lb.
 - 11 to 16 lbs. **45c** lb.
 - Smaller Sizes 4-10 lbs. - lb. 49c
- Chuck Roast** Lancaster Brand Bone In **43c** lb.
- Lancaster Brand Oven Ready Rib Roast 1 lb. 69c
 - Lancaster Brand Boneless Cross Cut Roast 1 lb. 79c
 - Lancaster Brand Chuck Steaks 1 lb. 49c
 - Hormel Canned Ham 4-lb. size \$3.99
 - Lancaster Brand Arm Pot Roast 1 lb. 59c
 - Lancaster Brand Beef Short Ribs 1 lb. 45c
 - Lancaster Brand Sausage Meat 1 lb. 53c
 - Farmdale Rounds Corned Beef 1 lb. 65c

For Your Holiday Turkey

- Alcoa Wrap** reg. 25 ft. roll **29c** 25 foot heavy duty **59c**
- Yams** 16 oz. can **23c** 25 oz. can **29c**
- Coffee** Chock Full O' Nuts 1 lb. can **75c**
- Potatoes** Minute Mashed 2 7-oz. pkgs. **39c**
- Niblets Corn** Tender Sweet 6 12-oz. cans **1.00**
- Grape Jelly** Welch's 20 oz. jar **29c**
- Miracle Whip** Salad Dressing quart **49c**
- Dog Food** Strongheart 6 16-oz. cans **59c**

Do you want a Perfect Christmas Tree delivered to your home for Christmas?

Christmas Farm Christmas trees are unusually high quality nursery grown trees. They have been grown from a specially developed variety of the aristocratic Scotch pine. This variety has a particularly rich green color and pleasing shape and fullness. It will not lose its needles even after standing for several weeks in a hot dry room. Being cut and delivered to your home fresh, these trees are less easily set on fire than the partially dried out trees found at the average lot. Our supply of these special quality trees is very limited this year. To obtain one you must order now. Use the order form below to place your order today.

- ORDERING YOUR CHRISTMAS FARM CHRISTMAS TREE NOW SAVES YOU THE TIME AND BOTHER OF SHOPPING FOR A TREE DURING THE BUSY TIME JUST BEFORE CHRISTMAS.
- OUR DECEMBER DELIVERY SERVICE SAVES YOU THE MUSS AND FUSS OF BRINGING YOUR TREE HOME FROM A LOT.
- CHRISTMAS FARM CHRISTMAS TREES ARE FRESHER, MORE FIRE RESISTANT AND WILL NOT LOSE THEIR NEEDLES.
- CHRISTMAS FARM CHRISTMAS TREES HAVE PERFECT SHAPE, DENSITY AND COLOR.
- CHRISTMAS FARM CHRISTMAS TREES NEED FEWER ORNAMENTS AND LIGHTS FOR THAT DECORATED LOOK. THEY REQUIRE NO RAIN OR ICICLES TO HIDE HOLES AND OPEN DENSITY.
- SATISFACTION GUARANTEED. IF YOU ARE NOT COMPLETELY SATISFIED WITH YOUR TREE WHEN IT IS DELIVERED YOU MAY SIMPLY REFUSE TO ACCEPT DELIVERY WITHOUT OBLIGATION ON YOUR PART.

Christmas Farm

86 UNION AVE., NUTLEY, N. J. • North 7-0555
Please deliver the following Christmas tree(s) and white pine boughs to the address shown below:

- 3 ft. tree(s) @ \$4.50
- 4 ft. tree(s) @ \$5.50
- 5 ft. tree(s) @ \$6.50
- 6 ft. tree(s) @ \$7.50
- 7 ft. tree(s) @ \$8.50
- 8 ft. tree(s) @ \$10.50
- 9 ft. tree(s) @ \$12.50
- 10 ft. tree(s) @ \$14.50

(Note: tree height accuracy - plus or minus 6 inches)
Large bundle(s) (4 lbs.) white pine boughs @ \$1.00. (Sufficient fragrant, slender stemmed, long needled boughs to tastefully decorate the average room.)
Bale(s) (25 lbs.) white pine boughs @ \$4.50.

☐ Ship C.O.D.
☐ Send remittance in full with your order and receive free of charge one large bundle (4 lbs.) of white pine boughs with each tree. Satisfaction guaranteed or money refunded.

Name _____ Street Address _____
Apt. No. _____ Town or City _____
*Delivery only to communities in or adjoining Essex County, N. J.

Free 30 S&H GREEN STAMPS
In addition to your regular stamps with the purchase of One Pound Can of Ideal Coffee and this coupon.

NAME _____
ADDRESS _____
CITY _____
This coupon expires November 26th

shop ACME

- Dairy Department**
- Pillsbury Buttermilk or Sweetmilk Biscuits . . . 6 pkgs. **49c**
 - Ballard Biscuits . . . 6 pkgs. **49c**
 - Sharp Sticks Cracker Barrel 17-oz pkgs. **51c**
- All advertised prices effective Wed. thru Sat., Nov. 19th.

By Districts and Wards

Election Returns in Belleville

(Listed below by districts and wards is the voting tabulation of last Tuesday's election as computed by The Belleville Times.)

First Ward

FIRST DISTRICT
Nixon 184, Kennedy 321; Case 190, Lord 280; Miele 128, Rodino 359; Magee 163, Caputo 299; Giuliano 171, Williams 286; Faulkner 160, Sheets 294; Cundari 169, Reitman 151, McIver 159, Saldutti 290, Moss 295, McKenna 296; referendum, yes 208, no 30.

SECOND DISTRICT
Nixon 95, Kennedy 228; Case 105, Lord 205; Miele 70, Rodino 274; Magee 87, Caputo 217; Giuliano 87, Williams 216; Faulkner 81, Sheets 212; Cundari 88, Reitman 83, McIver 90, Saldutti 204, Moss 211, McKenna 211; referendum, yes 134, no 26.

THIRD DISTRICT
Nixon 277, Kennedy 409; Case 292, Lord 354; Miele 192, Rodino 473; Magee 244, Caputo 388; Giuliano 262, Williams 369; Faulkner 246, Sheets 376; Cundari 257, Reitman 247, McIver 247, Saldutti 369, Moss 371, McKenna 380; referendum, yes 355, no 55.

FIRST WARD TOTALS
Nixon 556, Kennedy 958; Case 587, Lord 839; Miele 390, Rodino 1,106; Magee 494, Caputo 904; Giuliano 520, Williams 871; Faulkner 487, Sheets 882; Cundari 514, Reitman 481, McIver 496, Saldutti 836, Moss 877, McKenna 887; referendum, yes 697, no 111. Registration 1,786, total vote 1,596.

Second Ward
FIRST DISTRICT
Nixon 306, Kennedy 254; Case 334, Lord 208; Miele 251, Rodino 300; Magee 292, Caputo 238; Giuliano 312, Williams 221; Faulkner 284, Sheets 217; Cundari 305, Reitman 296, McIver 289, Saldutti 224, Moss 222, McKenna 228; referendum, yes 284, no 65.

SECOND DISTRICT
Nixon 208, Kennedy 457; Case 231, Lord 384; Miele 156, Rodino 496; Magee 189, Caputo 423; Giuliano 226, Williams 393; Faulkner 182, Sheets 413; Cundari 215, Reitman 192, McIver 184, Saldutti 404, Moss 409, McKenna 415; referendum, yes 290, no 63.

THIRD DISTRICT
Nixon 281, Kennedy 572; Case 292, Lord 354; Miele 192, Rodino 473; Magee 244, Caputo 388; Giuliano 262, Williams 369; Faulkner 246, Sheets 376; Cundari 257, Reitman 247, McIver 247, Saldutti 369, Moss 371, McKenna 380; referendum, yes 355, no 55.

THIRD DISTRICT
Nixon 281, Kennedy 572; Case 292, Lord 354; Miele 192, Rodino 473; Magee 244, Caputo 388; Giuliano 262, Williams 369; Faulkner 246, Sheets 376; Cundari 257, Reitman 247, McIver 247, Saldutti 369, Moss 371, McKenna 380; referendum, yes 355, no 55.

THIRD DISTRICT
Nixon 281, Kennedy 572; Case 292, Lord 354; Miele 192, Rodino 473; Magee 244, Caputo 388; Giuliano 262, Williams 369; Faulkner 246, Sheets 376; Cundari 257, Reitman 247, McIver 247, Saldutti 369, Moss 371, McKenna 380; referendum, yes 355, no 55.

THIRD DISTRICT
Nixon 281, Kennedy 572; Case 292, Lord 354; Miele 192, Rodino 473; Magee 244, Caputo 388; Giuliano 262, Williams 369; Faulkner 246, Sheets 376; Cundari 257, Reitman 247, McIver 247, Saldutti 369, Moss 371, McKenna 380; referendum, yes 355, no 55.

THIRD DISTRICT
Nixon 281, Kennedy 572; Case 292, Lord 354; Miele 192, Rodino 473; Magee 244, Caputo 388; Giuliano 262, Williams 369; Faulkner 246, Sheets 376; Cundari 257, Reitman 247, McIver 247, Saldutti 369, Moss 371, McKenna 380; referendum, yes 355, no 55.

THIRD DISTRICT
Nixon 281, Kennedy 572; Case 292, Lord 354; Miele 192, Rodino 473; Magee 244, Caputo 388; Giuliano 262, Williams 369; Faulkner 246, Sheets 376; Cundari 257, Reitman 247, McIver 247, Saldutti 369, Moss 371, McKenna 380; referendum, yes 355, no 55.

THIRD DISTRICT
Nixon 281, Kennedy 572; Case 292, Lord 354; Miele 192, Rodino 473; Magee 244, Caputo 388; Giuliano 262, Williams 369; Faulkner 246, Sheets 376; Cundari 257, Reitman 247, McIver 247, Saldutti 369, Moss 371, McKenna 380; referendum, yes 355, no 55.

THIRD DISTRICT
Nixon 281, Kennedy 572; Case 292, Lord 354; Miele 192, Rodino 473; Magee 244, Caputo 388; Giuliano 262, Williams 369; Faulkner 246, Sheets 376; Cundari 257, Reitman 247, McIver 247, Saldutti 369, Moss 371, McKenna 380; referendum, yes 355, no 55.

THIRD DISTRICT
Nixon 281, Kennedy 572; Case 292, Lord 354; Miele 192, Rodino 473; Magee 244, Caputo 388; Giuliano 262, Williams 369; Faulkner 246, Sheets 376; Cundari 257, Reitman 247, McIver 247, Saldutti 369, Moss 371, McKenna 380; referendum, yes 355, no 55.

THIRD DISTRICT
Nixon 281, Kennedy 572; Case 292, Lord 354; Miele 192, Rodino 473; Magee 244, Caputo 388; Giuliano 262, Williams 369; Faulkner 246, Sheets 376; Cundari 257, Reitman 247, McIver 247, Saldutti 369, Moss 371, McKenna 380; referendum, yes 355, no 55.

365, Lord 447; Miele 219, Rodino 623; Magee 275, Caputo 534; Giuliano 285, Williams 511; Faulkner 270, Sheets 525; Cundari 304, Reitman 277, McIver 258, Saldutti 505, Moss 514, McKenna 526; referendum, yes 437, no 105.

FOURTH DISTRICT
Nixon 301, Kennedy 373; Case 323, Lord 313; Miele 234, Rodino 426; Magee 276, Caputo 339; Giuliano 312, Williams 316; Faulkner 282, Sheets 325; Cundari 306, Reitman 289, McIver 284, Saldutti 329, Moss 334, McKenna 327; referendum, yes 328, no 65.

FIFTH DISTRICT
Nixon 116, Kennedy 485; Case 153, Lord 432; Miele 86, Rodino 511; Magee 120, Caputo 448; Giuliano 143, Williams 436; Faulkner 102, Sheets 462; Cundari 135, Reitman 119, McIver 112, Saldutti 433, Moss 441, McKenna 463; referendum, yes 294, no 41.

SIXTH DISTRICT
Nixon 233, Kennedy 452; Case 270, Lord 379; Miele 144, Rodino 529; Magee 194, Caputo 432; Giuliano 244, Williams 291; Faulkner 200, Sheets 419; Cundari 225, Reitman 216, McIver 200, Saldutti 409, Moss 399, McKenna 420; referendum, yes 320, no 75.

SECOND WARD TOTALS
Nixon 1,445, Kennedy 2,593; Case 1,676, Lord 2,163; Miele 1,090, Rodino 2,885; Magee 1,346, Caputo 2,414; Giuliano 1,532, Williams 2,268; Faulkner 1,321, Sheets 2,361; Cundari 1,490, Reitman 1,319, McIver 1,327, Saldutti 2,304, Moss 2,319, McKenna 2,379; referendum, yes 1,953, no 414. Registration 4,568, Total Vote 4,119.

Third Ward
FIRST DISTRICT
Nixon 429, Kennedy 411; Case 477, Lord 317; Miele 340, Rodino 481; Magee 402, Caputo 378; Giuliano 477, Williams 315; Faulkner 405, Sheets 353; Cundari 426, Reitman 409, McIver 399, Saldutti 366, Moss 348, McKenna 354; referendum, yes 405, no 118.

SECOND DISTRICT
Nixon 276, Kennedy 339; Case 305, Lord 287; Miele 217, Rodino 374; Magee 271, Caputo 315; Giuliano 292, Williams 303; Faulkner 255, Sheets 315; Cundari 269, Reitman 263, McIver 255, Saldutti 321, Moss 315, McKenna 321; referendum, yes 290, no 63.

THIRD DISTRICT
Nixon 281, Kennedy 572; Case 292, Lord 354; Miele 192, Rodino 473; Magee 244, Caputo 388; Giuliano 262, Williams 369; Faulkner 246, Sheets 376; Cundari 257, Reitman 247, McIver 247, Saldutti 369, Moss 371, McKenna 380; referendum, yes 355, no 55.

THIRD DISTRICT
Nixon 281, Kennedy 572; Case 292, Lord 354; Miele 192, Rodino 473; Magee 244, Caputo 388; Giuliano 262, Williams 369; Faulkner 246, Sheets 376; Cundari 257, Reitman 247, McIver 247, Saldutti 369, Moss 371, McKenna 380; referendum, yes 355, no 55.

THIRD DISTRICT
Nixon 281, Kennedy 572; Case 292, Lord 354; Miele 192, Rodino 473; Magee 244, Caputo 388; Giuliano 262, Williams 369; Faulkner 246, Sheets 376; Cundari 257, Reitman 247, McIver 247, Saldutti 369, Moss 371, McKenna 380; referendum, yes 355, no 55.

THIRD DISTRICT
Nixon 281, Kennedy 572; Case 292, Lord 354; Miele 192, Rodino 473; Magee 244, Caputo 388; Giuliano 262, Williams 369; Faulkner 246, Sheets 376; Cundari 257, Reitman 247, McIver 247, Saldutti 369, Moss 371, McKenna 380; referendum, yes 355, no 55.

THIRD DISTRICT
Nixon 281, Kennedy 572; Case 292, Lord 354; Miele 192, Rodino 473; Magee 244, Caputo 388; Giuliano 262, Williams 369; Faulkner 246, Sheets 376; Cundari 257, Reitman 247, McIver 247, Saldutti 369, Moss 371, McKenna 380; referendum, yes 355, no 55.

THIRD DISTRICT
Nixon 281, Kennedy 572; Case 292, Lord 354; Miele 192, Rodino 473; Magee 244, Caputo 388; Giuliano 262, Williams 369; Faulkner 246, Sheets 376; Cundari 257, Reitman 247, McIver 247, Saldutti 369, Moss 371, McKenna 380; referendum, yes 355, no 55.

THIRD DISTRICT
Nixon 281, Kennedy 572; Case 292, Lord 354; Miele 192, Rodino 473; Magee 244, Caputo 388; Giuliano 262, Williams 369; Faulkner 246, Sheets 376; Cundari 257, Reitman 247, McIver 247, Saldutti 369, Moss 371, McKenna 380; referendum, yes 355, no 55.

THIRD DISTRICT
Nixon 281, Kennedy 572; Case 292, Lord 354; Miele 192, Rodino 473; Magee 244, Caputo 388; Giuliano 262, Williams 369; Faulkner 246, Sheets 376; Cundari 257, Reitman 247, McIver 247, Saldutti 369, Moss 371, McKenna 380; referendum, yes 355, no 55.

THIRD DISTRICT
Nixon 281, Kennedy 572; Case 292, Lord 354; Miele 192, Rodino 473; Magee 244, Caputo 388; Giuliano 262, Williams 369; Faulkner 246, Sheets 376; Cundari 257, Reitman 247, McIver 247, Saldutti 369, Moss 371, McKenna 380; referendum, yes 355, no 55.

319; referendum, yes 271, no 93.

THIRD DISTRICT
Nixon 270, Kennedy 317; Case 291, Lord 277; Miele 228, Rodino 352; Magee 268, Caputo 295; Giuliano 276, Williams 288; Faulkner 256, Sheets 295; Cundari 263, Reitman 263, McIver 259, Saldutti 290, Moss 285, McKenna 292; referendum, yes 292, no 94.

FOURTH DISTRICT
Nixon 346, Kennedy 264; Case 370, Lord 213; Miele 269, Rodino 332; Magee 333, Caputo 240; Giuliano 351, Williams 227; Faulkner 334, Sheets 231; Cundari 343, Reitman 335, McIver 331, Saldutti 225, Moss 224, McKenna 232; referendum, yes 304, no 105.

FIFTH DISTRICT
Nixon 315, Kennedy 471; Case 336, Lord 420; Miele 249, Rodino 533; Magee 279, Caputo 471; Giuliano 343, Williams 405; Faulkner 285, Sheets 440; Cundari 305, Reitman 293, McIver 281, Saldutti 444, Moss 436, McKenna 442; referendum, yes 361, no 102.

SIXTH DISTRICT
Nixon 502, Kennedy 765; Case 577, Lord 614; Miele 379, Rodino 886; Magee 472, Caputo 709; Giuliano 567, Williams 618; Faulkner 471, Sheets 657; Cundari 548, Reitman 473, McIver 467, Saldutti 667, Moss 642, McKenna 671; referendum, yes 602, no 163.

THIRD WARD TOTALS
Nixon 2,132, Kennedy 2,567; Case 2,356, Lord 2,128; Miele 1,680, Rodino 2,978; Magee 2,025, Caputo 2,408; Giuliano 2,306, Williams 2,156; Faulkner 2,006, Sheets 2,291; Cundari 2,154, Reitman 2,036, McIver 1,992, Saldutti 2,313, Moss 2,280, McKenna 2,310; referendum, yes 2,239, no 675. Registration 5,275; Total vote, 4,799.

Fourth Ward
FIRST DISTRICT
Nixon 147, Kennedy 589; Case 168, Lord 500; Miele 110, Rodino 616; Magee 114, Caputo 553; Giuliano 251, Williams 424; Faulkner 120, Sheets 484; Cundari 189, Reitman 119, McIver 118, Saldutti 505, Moss 447, McKenna 487; referendum, yes 193, no 56.

SECOND DISTRICT
Nixon 185, Kennedy 492; Case 224, Lord 385; Miele 158, Rodino 514; Magee 161, Caputo 441; Giuliano 274, Williams 348; Faulkner 160, Sheets 397; Cundari 259, Reitman 167, McIver 168, Saldutti 400, Moss 380, McKenna 388; referendum, yes 374, no 63.

THIRD DISTRICT
Nixon 195, Kennedy 518; Case 195, Lord 377; Miele 159, Rodino 543; Magee 131, Caputo 423; Giuliano 336, Williams 291; Faulkner 142, Sheets 341; Cundari 254, Reitman 153, McIver 136, Saldutti 368, Moss 333, McKenna 347; referendum, yes 200, no 35.

FOURTH DISTRICT
Nixon 472, Kennedy 973; Case 556, Lord 809; Miele 348, Rodino 1,075; Magee 433, Caputo 922; Giuliano 574, Williams 782; Faulkner 439, Sheets 845; Cundari 538, Reitman 442, McIver 435, Saldutti 859, Moss 834, McKenna 859; referendum, yes 585, no 204.

FIFTH DISTRICT
Nixon 542, Kennedy 501; Case 580, Lord 377; Miele 348, Rodino 570; Magee 492, Caputo 468; Giuliano 579, Williams 389; Faulkner 499, Sheets 414; Cundari 559, Reitman 514, McIver 499, Saldutti 439, Moss 409, McKenna 427; referendum, yes 485, no 106.

SIXTH DISTRICT
Nixon 529, Kennedy 730; Case 592, Lord 581; Miele 377, Rodino 856; Magee 472, Caputo 676; Giuliano 602, Williams 567; Faulkner 478, Sheets 627; Cundari 563, Reitman 482, McIver 477, Saldutti 619, Moss 618, McKenna 613; referendum, yes 568, no 172.

FOURTH WARD TOTALS
Nixon 2,070, Kennedy 3,803; Case 2,315, Lord 3,029; Miele 1,605, Rodino 4,174; Magee 1,803, Caputo 3,483; Giuliano 2,616, Williams 2,795; Faulkner 1,838, Sheets 3,108; Cundari 2,362, Reitman 1,877, McIver 1,833, Saldutti 3,190, Moss 3,051, McKenna 3,121; referendum, yes 2,303, no 636. Registration 6,672, Total Vote, 6,067.

TOWN TOTALS
Nixon 6,203, Kennedy 9,921; Case 6,934, Lord 8,159; Miele 4,765, Rodino 11,143; Magee 5,668, Caputo 9,209; Giuliano 6,974, Williams 8,090; Faulkner 5,654, Sheets 8,642; Cundari 6,520, Reitman 5,713, McIver 5,648, Saldutti 8,670, Moss 8,507, McKenna 8,697; referendum, yes 7,192, no 1,836. Registration 18,301; Total Vote 16,581.

George Emch, Jr. Ends Training
Marine Pvt. George E. Emch Jr., son of Mr. and Mrs. George E. Emch of 121 Malone Avenue, Belleville, completed recruit training October 5 at the Marine Corps Recruit Depot, Parris Island, S. C.

Relatives and friends of Emch were on hand to witness the graduation ceremonies.

The 12-week training schedule included drill, bayonet training, physical conditioning, parades and ceremonies, and other military subjects.

Three weeks were spent on the rifle range where the recruits fired the M-1 rifle and received instruction in basic Marine infantry weapons.

This recruit training prepares Emch for further specialized infantry training at Camp Lejeune, N. C.

Play Directors' Course At Nutley Woman's Club
A drama course for play directors, open to all Women's Clubs in the Eighth District, will start today, Thursday, at 9:15 a.m., and continue for five weeks at the Nutley Woman's Club, 226 Chestnut Street.

Mrs. Earl Wood, former State drama chairman, will be the instructor. Classes will be held weekly, from 9:15 to 11:15 a.m. Registrations may be made with Mrs. C. Stanton Jones, 2 St. Clair Avenue, Rutherford.

Seaman Sam says: "Then there was the girl who went out to buy a straw hat and came back with a sailor."

—USS Concord Minute Men.

CUSTOM RELOADING
243 AND 30/06
Shotgun Shells
MICHAEL SERVIENTE
NO. 7-7168
After 5 P.M.
24 HOUR SERVICE

PEACE of mind is yours when you use our service

Relax . . . and have a good time on your trip, knowing that travel details have been arranged well in advance by our travel bureau.

• Airlines
• Steamships
• Cruises
• Hotel Accommodations
• Honeymoon Trips
• Tours

PL 1-2727
The Happiest Trips . . . Begin Here!
Belleville Travel Service
246 Washington Avenue
Belleville, N. J.

Peace of mind is yours when you use our service

Relax . . . and have a good time on your trip, knowing that travel details have been arranged well in advance by our travel bureau.

• Airlines
• Steamships
• Cruises
• Hotel Accommodations
• Honeymoon Trips
• Tours

PL 1-2727
The Happiest Trips . . . Begin Here!
Belleville Travel Service
246 Washington Avenue
Belleville, N. J.

Peace of mind is yours when you use our service

Relax . . . and have a good time on your trip, knowing that travel details have been arranged well in advance by our travel bureau.

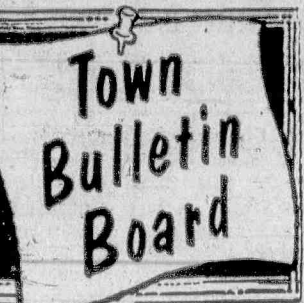
• Airlines
• Steamships
• Cruises
• Hotel Accommodations
• Honeymoon Trips
• Tours

PL 1-2727
The Happiest Trips . . . Begin Here!
Belleville Travel Service
246 Washington Avenue
Belleville, N. J.

Peace of mind is yours when you use our service

Relax . . . and have a good time on your trip, knowing that travel details have been arranged well in advance by our travel bureau.

• Airlines
• Steamships
• Cruises
• Hotel Accommodations
• Honeymoon Trips
• Tours



THURSDAY

12:00 noon — Belleville Lions Club — Christian's Restaurant.

3:45 p.m.—Jr. Red Cross Town Wide Chapter Meeting — Belleville Chapter Headquarters.

7:30 p.m.—OES Belleville Chapter — Masonic Temple.

8:15 p.m. — American Legion Auxiliary 105 — Legion Home.

8:00 p.m.—VFW Youngster Allden Post 275 — Veterans' Home.

8:00 p.m.—Fewsmithe Sr. Choir — Fewsmithe Presbyterian Church.

8:00 p.m.—P.T.A. Meeting—Guest speaker on Promoting Traffic Control—No. 10 School.

8:00 p.m.—CYO—St. Peter's.

FRIDAY
7:30 p.m.—Bingo games—St. Peter's.

8:00 p.m.—Choral Society — St. Peter's.

8 p.m.—CYO—St. Mary's.

8:15 p.m.—Sr. Choir — Silver Lake Baptist Church.

SATURDAY
8:00 p.m.—Fewsmithe Couples Club — Fewsmithe Presbyterian Church.

6:30 p.m.—Fewsmithe Jr. Westminister Fellowship—Fewsmithe Presbyterian Church.

7:45 p.m.—Fewsmithe Sr. Westminister Fellowship—Fewsmithe Presbyterian Church.

MONDAY
6:00 p.m.— Buffet Supper — Men's Night, Program. Mr. Kenneth Haynes "A Comis Interlude"—Womans Club.

7:30 p.m. — O.E.S. North Star Chapter—Masonic Temple.

8:00 p.m. — American Legion Post 105—Legion Home.

8:00 p.m.—CYO—Holy Family Family.

8:00 p.m. — Independent Order of Odd Fellows Harmony Lodge 25 — Masonic Temple.

8:00 p.m. — Belleville Chess Club—Recreation House.

8:30 p.m.—Knights of Columbus meeting — Knights of Columbus Home.

TUESDAY
12:15 p.m.—Belleville Kiwanis—Bethany Lutheran Church.

8:00 p.m. — Fewsmithe Mothers Club—Fewsmithe Presbyterian Church.

8:00 p.m. — Court Santa Maria —CDA—St. Peter's.

8:00 p.m. — Petrean Club—St. Peter's.

8:45 p.m.—Hadassah — Belleville — Nutley Chapter—Temple.

WEDNESDAY

9:30 a.m.—Retired Men's Club — Fewsmithe Presbyterian Church.

10:00 a.m. — Cancer Dressing Unit—Woman's Club.

12:15 p.m.—Rotary Club — For Hills.

3:45 p.m.—Fewsmithe Jr. Choir — Fewsmithe Presbyterian Church.

7:30 p.m.—Belleville F & A M Lodge 108—Masonic Temple.

7:30 p.m.—Radio Club—Recreation House.

7:30 p.m.—Bingo, Legion Home, 621 Washington Avenue.

Unico National Auxiliary Plans Jan. Card Party

The Woman's Auxiliary of Unico National, Nutley Chapter, will meet tonight, Thursday, at 8:15 o'clock at the Amvets Civic Center, 184 Park Avenue.

Plans will be completed for the fourth annual card party to be held January 27. Mrs. Felix Mirucki is chairman, and Mrs. Carl Orechio, co-chairman.

If you would reform the world from its errors and vices, begin by enlisting the mothers.

—C. Simmons.

LEGAL NOTICE
PUBLIC NOTICE
Re: 28 Sanford Avenue, Belleville, N. J. Block 696 lots 38 & 39 A

Take Notice: that I will apply to the Board of Commissioners of the Town of Belleville at the next regular meeting on November 22, 1960 for a Resolution removing a certain deed restriction contained in a deed from Town of Belleville to John Silvestri dated June 29, 1953. The said restriction being as follows:

"Restricted to one family residential building only."

The purpose of this application is to get legal clearance to erect a two family house on the said premises. Any objectors will be heard at this time.

Gerard T. Capodanno
Attorney for applicant
Samuel Aramando.
Fee \$9.90

SURROGATE'S NOTICE
ESTATE OF VIOLA SIEBERT, an incompetent now, deceased.

NOTICE OF SETTLEMENT
Notice is hereby given that the accounts of the subscriber, Guardian of the estate of VIOLA SIEBERT, an incompetent now deceased, will be audited and stated by the Surrogate and reported for settlement to the Essex County Court, Probate Division, on Tuesday, the 20th day of DE-

BOSTON
60¢
3 min station rate from Newark after 6 P.M. 10% tax not included.

CEMBER next.
VIOLA GLADWIN
Dated: November 14, 1960
LUM, FAIRLIE & FOSTER, Attorneys
605 Broad Street
Newark 2, N. J.
Fee \$14.00

SURROGATE'S NOTICE
Dated: October 31, 1960
Estate of STEVE MATYJASEK, deceased
Pursuant to the order of DAV- ID H.

Belleville Eleven Will Face Orange Thanksgiving Day

Bell Stadium in Orange will be the center of attention Thanksgiving morning at 11 o'clock when Belleville meets the Tornadoes, a team still in the running for Group IV state championship titles.

The Belleboys will face a team edged-out by East Orange, 20-19 for its only loss of the season. Orange lists among its conquered Nutley High School; score of that game was 25-7.

While the predictors are busily predicting victories for Orange this Thursday there is some consolation for Belleville fans to reflect on last year's holiday game when the Belleboys left Orange with a 10-0 present.

It should be made very clear somewhere, so let's make it here, that Orange really doesn't have Thursday's game sewed up. While the Orange and Black are favorites, everyone all year has been waiting for Belleville to explode.

It's so possible that the explosion may pop, bang or really boom Thursday morning that a full house is expected at Bell Stadium.

BELLEVILLE CHANGES

Belleville head coach Ed Berlinski isn't going into Thursday's game without a few tricks up his sleeve. For one thing, he's been pondering the question of what happens to his team in second halves. The Belleboys often this season have put in a good show during the opening half only to flub their leads in the final two periods.

Belleville's tentative starting lineup, which is boxed in in these columns, is news in itself. Coach

Berlinski and line coach Tom Testa may have some surprises for Orange after all.

Tom Perry, a 165 pound 5-9 senior, is listed as joining the starting team in the right guard position.

(Continued on Page 7)

Church, Turkey And Football Set For Thursday

Most churches in Belleville are planning special Thanksgiving services for either tomorrow or Thursday. The church listings which appear on page five of today's paper include the times and topics of the services.

Another feature of the Thanksgiving holiday will be the Belleville - Orange football game at Orange. The kickoff is scheduled for 11 o'clock in the morning. Details of the Thanksgiving football game, predictions and so forth appear on the sports section starting on page seven.

The staff of The Belleville Times extend to all its readers a rewarding and pleasant holiday.

Testimonial for Director

Rocco L. Constantino, town transportation director, will be tendered a testimonial dinner this Saturday at the Robert Treat Hotel, Newark.

Diane Nappi, 14, Wins N. J. Ballet Membership

Diane Nappi, 14 year old daughter of Mr. and Mrs. M. Nappi of 221 Holmes Street has been awarded a performing membership in the Garden State Ballet, the civic ballet company sponsored by the Ballet Foundation of New Jersey.

All dancing schools and teachers in the north Jersey area were notified of this audition. Competing against 50 contestants, Diane was one of 17 finalists selected by the Auditions committee to join the Garden State Ballet as a performing member.

Also selected at this dancers' audition to serve as an apprentice was Diane Orio, 13, of 286 North Belmont Avenue, Belleville.

The Ballet Foundation of New Jersey is a non-profit cultural organization whose main purpose is to support and sponsor performances of this New Jersey Ballet company. The Garden State Ballet made its public debut this month when they performed in Atlantic City for the convention of the New Jersey

Congress of Parents and Teachers.

Along with her academic studies, Diane spends four days each week taking classes in ballet and modern dance at the Newark Ballet Academy, where she is enrolled in the professional division. She now faces additional program of rehearsals in preparation for a busy season with the Garden State Ballet.

The company will next appear at the Newark Museum in a ballet.

(Continued On Page 2)

Nettleton New ITT Director



J. GILBERT NETTLETON JR.

Election of J. Gilbert Nettleton Jr., as vice president, director of marketing for ITT Federal Division, Clifton and ITT Laboratories, Nutley has been announced by I. Nevin Palley, president of the two divisions of International Telephone and Telegraph Corporation.

Nettleton was formerly a vice-president of Northrop Corporation, Hawthorne, California and general manager of its international division, a post he has held since 1957.

He joined Northrop Corporation in 1946 and, with Northrop Aircraft, Inc., held positions as executive assistant to the vice-president, director of military relations and assistant to the president.

(Continued On Page 2)

Accident Toll: 15 Stitches



HEAD ON CRASH Thursday noon in Belleville sent two local women to the Clara Maass Memorial Hospital. The accident came near the intersection of Perry and Main Streets. The car at the right was driven by Mrs. Claire Dougherty, 31, of 26 Division Avenue. She suffered lacerations of the face requiring nine stitches. A passenger in her car, Mrs. Viola Atkins, 36, of 255 Greylock Parkway, received six stitches on her right leg. Both women have been released. The driver of the second car, John Micone of Newark, was not injured. Sergeant John Monahan and Patrolman Thomas J. Dunleavy investigated.

Use Absentee Forms

Clara Maass Hospital Patients Cast Ballots

Because of the importance of the election this year, the Public Relations Department of the Clara Maass Memorial Hospital made an all-out effort to see that all patients unable to get to the polls had an opportunity of casting their ballots for the candidates of their choice.

Before the Registration deadline, all patients were canvassed to be sure they were properly registered. Pamphlets explaining how an absentee ballot could be obtained and how important each vote is were distributed to each patient. Then another check was made before October 31 to find anyone who wanted to apply for an absentee ballot.

During the past week, as these ballots were received, assistance was provided in completing the forms which accompany the secret ballot; and the forms were

notarized by William Searles of Nutley who donated his time as a public service.

Searles expressed the feelings of all those working on this project when he said, "It's the least I can do. Anyone who goes to so much trouble to vote when he is sick in the hospital deserves all the help we can give him."

Post Addresses N. Y. Confab



RICHARD G. POST

Richard G. Post, executive assistant to the vice-president of Federal Industries, Belleville addressed the Manufacturing Orientation Seminar of the American Management Association last week at the Hotel Astor, New York. Post spoke on the "Value of Materials Handling Consult-

(Continued On Page 2)

New Map Page Contest Today

A brand new map page contest starts today in The Belleville Times. Because of the early deadlines of today's holiday issue, any winners of the last contest will be announced in next week's paper. If no one wins last week's contest, today's contest will offer prizes totaling \$20. Participating sponsor of this week's contest is Paul's Shoe Stores, 153 Washington Avenue. The contest rules follow:

Turn to the double - spread Map Page and you will see a picture of a group of people snapped at a Belleville place of business.

One of the persons in the photo is singled out with a circle. Readers are invited to identify this person (in this instance a woman), and the spot where the picture was taken.

The first one to do so - by mail or in person at the office of The Times - will receive an award of a \$5 check drawn to the order of one of the co-operating places of business listed on the Map Page.

PLEASE NOTE: Identification of the person and place must be made by coming to the office of The Times, 246 Washington Ave., or by mail. Phone calls will not be accepted.

The person who is circled is requested to call at our office in person and receive a similar \$5 check as her prize.

It is important in playing this fascinating game of identification to note these simple rules: 1) the winner must tell us who the person is whose photo is circled and where picture was taken; 2) entries in the contest must be made in person or by mail - NOT by phone; 3) the prize will be awarded to the one who submits the FIRST correct identification; 4) all decisions by The Times are final; 5) there is a prize also for the person whose photo is circled.

(Continued On Page 2)

Independent Citizens Organize in Support Of New Government

A second group is being mobilized to change Belleville's form of government to the Mayor Council type. Headed by Attorney John Noonan, the new group will formally organize "within a

fortnight" and will comprise independent citizens without regard to politics.

The new group of citizens will be independent of a second organization headed by Commissioner George Kiernan in urging the government change. Working with Kiernan in the "Council for Better Government" are former Commissioner Pat Waters and Richard Shaffer who has headed the "council" since it was organized early last year.

Noonan, a former state attorney general, told The Times in an interview last night that he believes a "truly interested town-wide citizen movement representing business and professional men from all sections of town" will greatly benefit the success of the mayor-council movement.

Asked if the creation of the new group reflects any differences between him and Kiernan, Noonan answered saying "there is no disagreement with Mr. Kiernan. As a Belleville citizen, he has every right to further the cause of Mayor-Council government for Belleville in any way he chooses."

Continuing, Noonan said, "as for myself, I have received much enthusiastic support from citizens who are anxious to organize a truly independent citizens' committee to obtain signatures for a change to mayor-council government."

Noonan reported that "within the next fortnight, I shall call a meeting of interested citizens to discuss the steps necessary for a successful changeover from the present commission form of government to the mayor - council

form of government."

Meanwhile Comm. Kiernan yesterday reported that "about a dozen people" picked up petitions from his office. He said that while signatures are already being solicited, "we don't expect to have any results in until the weekend."

NO CONFLICT

Noonan, who resides at 31 Overlook Avenue, stressed that he independent citizens and Kiernan's Council for Better Government.

"We have one thing in common," the attorney said. "We both believe that mayor - council government is best for Belleville. I see absolutely no conflict whatsoever between Mr. Kiernan's actions and my own."

Noonan said that the organization of the independent citizens' group to obtain signatures for a government change "should give no added comfort to those politicians in Belleville who oppose progress for our community."

A total of 3,690 signatures are needed on the petitions to force a referendum for a change to the mayor - council type. Kiernan reported late last month that he expected to wrap up the project "in a couple of months."

A third group in Belleville, the Citizens Tax Council, has been working for more than a year toward the 3,690 signatures for a government change referendum to the council - manager form. Tax Council president Sal Calabro addressed the Valley Civic Association last night. A report on this meeting will appear in The Times next week.

William Brooks New Director Of Palsy School



WILLIAM H. BROOKS

The appointment of William H. Brooks as Director of the Cerebral Palsy School and Treatment Center in Belleville was recently announced by George Isenberg, president of Cerebral Palsy of Essex and West Hudson, Brooks, who will direct the activities of this school for handicapped children, has had more than a decade of experience in this field.

After receiving a bachelor's degree in physical education from New York University and serving in the United States Army.

(Continued On Page 2)

Chamber Installation Scheduled for January

Belleville Chamber of Commerce newly - elected officers will be installed at a dinner in January; the dinner will also give tribute to the Public Service Electric Company for its cooperation in speeding the installation of new street lights along Washington Avenue.

William McDowell is chairman of the January dinner. Although the exact date of the dinner has not been announced, it will be on a Wednesday night. Assisting McDowell are Robert Horsefield and Edward Bonnet.

Officers to be installed include Arthur Jackson, president; Albin H. Oberg, Horsefield, William J. Orchard and Clayton Shepherd, vice presidents; Frank Orechio, board chairman; Rob- ael Pariso, treasurer, and Harry T. French, executive director.

State Chamber Shows Property Tax Impact

Of the \$159,856,408 property tax bill for 1960 levied by the municipalities within Essex County, 46.21 per cent is levied on residential property and the remaining 53.73 per cent is levied on the various forms of non - residential property, according to a study just released to the Belleville Times by the New Jersey State Chamber of Commerce.

The chamber's study shows for each municipality in the State the amount of the 1960 property tax levied on business real property, inventories, machinery and equipment; on farm real property, stock and machinery; on Class II (locally taxed) railroad property; on vacant land, and on residential real property and household goods. It also shows the tax value of the veterans' exemptions.

Prepared by the State Chamber's Department of Governmental and Economic Research, the study offers a broad and detailed picture of the impact of the 1960 local property tax in New Jersey. It is titled:

"Where the Money Comes From"

The Chamber recently published a companion study "Where the Money Goes," analyzing distribution of the property tax for school county and municipal purposes.

Statewide, residential property is paying about half of the 1960 levy - 52 per cent, while 48 per cent falls on the various forms of non - residential property. A breakdown of the non - residential category shows 42 per cent of the levy falling on commercial and industrial property and large apartment houses (with more than four families); less than two per cent falling on farm property; less than two per cent on railroad Class II property; and three per cent on vacant land.

In Essex County, industrial and commercial property and large apartment houses support 51.60

(Continued On Page 2)

BSA Cabinet Elects Officers

The Belleville Boy Scout District Explorer Cabinet has elected Victor Russomanno its president. Russomanno is with post 306 at the Montgomery Presbyterian Church.

Others elected are Richard Barton, vice - president; Joseph Dzwonkowski, secretary, and Joseph Maluchny, treasurer.

Barton and Dzwonkowski are with post 375 at St. Peter's Church; Maluchny's post is 306. Plans for a district social on December 17 are being completed. Peter Fineo of post 387 at St. Anthony's Church is chairman.

Other plans of the cabinet include an "Explorer Ball," a father - son bowling match, marksmanship instruction and a conservation weekend at Blairs - town's Boy Scout Camp Mohican.

The next cabinet meeting is December 7 in the Recreation House at 7:30 p.m.

The Explorer Cabinet is comprised of two representatives from each post in Belleville. Purpose of the group is to supplement unit programs with activities which ordinarily could not be arranged or financed by individual posts.

Installation of New Water Mains Underway



ON SCHEDULE: Installation of new 12-inch water mains along Washington Avenue is underway and on schedule. Commissioner Robert Gruhin, director of public works, scheduled the water-main work's completion before the resurfacing of the avenue is undertaken. The new lines will extend between Rossmore Place and the Nutley line. The added mains will improve water pressure in the area and will help to give the town a high rating in its fire prevention facilities.



Contribution of \$6,500 to the Cerebral Palsy School and Treatment Center in Belleville by the Rose Fisch Kaunitz Memorial was announced this week by the center and the memorial.

Fourteen - year - old Karl Perry of 320 Courtland Street suffered a fractured leg last Wednesday when he was struck by a car while crossing Washington Avenue at Academy Street. He was in fair condition in Clara Maass Memorial Hospital.

Miss Lola DiBella of 139 White Oak Terrace has been chosen Miss Garden State Editor by the New Jersey Industrial Editors' Association. Miss DiBella acted as hostess for the Association at its annual institute last week in the Military Park Hotel, Newark. Miss DiBella is a Belleville High School graduate. She was Miss Sea Queen 1959, Miss Men's Apparel Club 1959 and a finalist in the Miss New Jersey Press Photographers Association and Miss New Jersey contests.



Proceeds from a children's bazaar benefited the Children's Orphanage, Washington Avenue, Nutley where this picture was taken. The Belleville children who conducted the bazaar are shown above with Mother Superior; they are, left to

This Weeks Thought

BY HARRY H. DOUMA
"GODLESS COMMUNISM"

When our forefathers came to America they established a country which gave freedom to all who entered. Now in 1960 we are seeing a force which is on the move to overthrow this freedom. This force is godless, lying, deceitful, communism. Slowly, slowly,—it is trying to conquer. This murderous society has many evil tactics. One of these is lying propaganda, and another is using innocent peoples to do their dirty work. Only in this year we saw the communist inspired riots using our young people in San Francisco. They want to oust the committees in our land which are preserving our freedom. But the saddest thing of all is that we are so stupid in America to believe its lies.

At present the Christian Anti-Communism Crusade is sponsoring a week of schooling in Philadelphia, Pa. Would to God that many more of these might be established in our country. Let us be frank with ourselves. There is no room for Communism in our country. We fear God, they are godless. Let us stand up and combat this evil. The following lines are from the Christian Beacon in Collingswood, N. J.

"Khrushchev is a man of 'peace'"

This we all recall
A piece of this, a piece of that—
Until he has it all!
And finally, let us look at a verse from the Bible.

"They that trust in the Lord shall be as Mount Zion, which cannot be removed, but abideth forever."

SAVE! SAVE!
Save \$3.20 over the newsstand price by starting your subscription to The Belleville Times before December 1. After December 1, the yearly subscription rate goes up from two to three dollars.

SCHOOL NEWS
Every week during the school year, The Belleville Times features a page of news concerning activities in our schools. Keep up with all the news by reading The Belleville Times every week.

Post Addresses

(Continued From Page 1)
ants."

A graduate of Upsala College and of the Traffic Manager's Institute in New York City, Post also completed courses in advanced management procedures at Rutgers University and the Newark College of Engineering. He holds a patent pending on a warehousing device that greatly improves storage capacity.

Federal Industries is the largest manufacturer of vinyl coated fabrics in the world, a great portion of the firm's production being utilized in the automotive industry. The firm was organized in 1919 and currently occupies 16 acres of manufacturing space in Belleville.

dance roles in six ballets during this coming season. Ruthanna Boris, renowned ballerina and choreographer for the Ballet Russe de Monte Carlo and the New York City Ballet, has been engaged as guest choreographer and will stage three new ballets for presentation this season. An original modern ballet entitled, "Roundelay," a narrative ballet to a score by Aaron Copland and the third act of Delibes' familiar "Coppelia" will be directed by Miss Boris.

A fourth work will be choreographed by Joyce Trisler, noted modern dancer to the "Brandenburg Concertos" of J. S. Bach. Diane will also perform in "Peter and the Wolf" and "Carnival" for special children's matinees.

Name Brooks

(Continued From Page 1)
Brooks returned to New York University and received a master's degree in education, majoring in physical therapy. He served as chief physical therapist for the United Cerebral Palsy Association of Nassau County for two and a half years, co-ordinator-physical therapist at the Godmothers League of the Cerebral Palsy Rehabilitation Center of New York City for an additional two and a half years, director of program services for United Cerebral Palsy of Queens County for more than three years, and as senior physical therapist for one year at BS Coler Hospital on Welfare Island and one year at the Coney Island Hospital in Brooklyn.

Brooks also spent one year in Mar del Plata, Argentina as a consultant for the rehabilitation program for the Centro de Rehabilitacion Para Ninos Lisiados; in this capacity he was responsible for organizing and developing a total program for cerebral palsied children in Argentina.

State Chamber

(Continued From Page 1)
per cent of the levy; farm property supports .04 per cent; Class II railroad property supports .04 per cent; Class II railroad property, supports .61 per cent; and vacant land supports 1.53 per cent.

Among the state's 21 counties, the percentage of property tax falling upon the different categories of taxable property range as follows:

Class of Property	Percentage
Residential	69 per cent
Commercial, Industrial and Lg. Apartments	23 per cent
Hudson 63 p.c.	Ocean 17 p.c.
Hunterdon 23 p.c.	Hudson .02 p.c.
Class II Railroad	Hudson 12 p.c.
Vacant Land	(x) .07 p.c.
Ocean 11 p.c.	Essex 1.50 p.c.
(x) Identical for Burlington, Gloucester, Ocean and Sussex.	

STATE AND COUNTY CHANGES CITED

The total statewide levy on residential property this year amounts to \$433 million — an increase of \$36 million or nine per cent over last year. Taking into account a \$21 million deduction for veterans' exemptions, this total includes \$435 million of tax on residential real property and \$19 million of tax on household goods. In Essex County, the residential property levy rose to \$73,875,788 from the 1959 total of \$70,340,433—an increase of \$3,535,355 or 5.03 per cent over 1959.

Diane Nappi

(Continued From Page 1)
let demonstration scheduled for Christmas week. A performance in March is planned with the Queens Symphony Orchestra, in Forest Hills, N. Y. As members of the Northeast Regional Ballet Festival Association, the Garden State Ballet expects to travel to Dayton, Ohio early in May for a performance in the ballet festival to be held there in which 15 other civic ballet companies from the North east United States will participate.

For its own season, the Ballet Foundation of New Jersey will sponsor two or three local performances of the Garden State Ballet, with Achilles D'Amico of West Orange, conducting the Ballet Foundation orchestra.

Diane will learn and perform

PL 9-1497

EYES EXAMINED

Dr. M. Rooschvarg

OPTOMETRIST

BY APPOINTMENT 132 Washington Avenue
Belleville

CLOSE OUTS - 1960 PATTERNS

5,000 ROLLS

WALLPAPER

49c Per Roll

Belleville Paint & Wallpaper Co.

132 Ave. PL 9-2802 Belleville, N. J.

Future President?



TIMOTHY PATRICK KIERNAN
This cute fellow won an honorable mention in the Children's National Photographic Contest and is eligible for the grand final selection from entries across the United States.

This is Timothy Patrick Kiernan, son of Mr. and Mrs. George F. Kiernan, Jr., of Nutley and formerly of Belleville. Tim is the grandson

of Commissioner and Mrs. George Kiernan and Homer Newsom, all of Belleville. He has a sister, Pamela Frances, three.

Final selections in the national contest will be made this month. Tim's picture was entered through Hahne's Studios, Newark. He is 16-months-old.

The vacant land levy in all the counties increased to \$25 million this year from \$23 million last year, an increase of \$2 million or 8 per cent.

In Essex County the vacant land levy amounts to \$2,439,577 in 1960 as compared to \$2,570,339 in 1959, a drop of \$130,762 or a drop of 5.09 per cent.

In releasing the study, Executive Vice President Albert H. Acken said that the Chamber's 1959 study of the impact of the local property tax formed the basis for the Chamber's analysis of property tax legislation before the State Legislature last February.

"Our present and future studies," he said, "will form the basis for showing the actual changes in tax impact on each category of property brought about by the new property tax assessment law when it becomes operative in 1962."

WHEELING

80¢

3 min station rate from Newark after 6 PM. 10% tax not included.

TURKEY

PUMPKIN PIE

CALLING THE FOLKS

it's part of the Thanksgiving Tradition

No matter how far away they are, your phone will bring you together for a real family visit—in person, in seconds... and so inexpensively — Thanksgiving Day—or any day of the year.

NEW JERSEY BELL

Map Page

(Continued From Page 1)

If no one identifies the circled photo and the place where picture was taken, the prize money will be added to the following week's award.

Each week a picture of this type will be taken somewhere in Belleville. Each week the picture will appear on the Map Page and test your ingenuity — and your power of observation.

It can be lots of fun. Get started NOW.

ed NOW. Work fast. Be the First, right answers. Remember, being to come to our office with the first means being the winner.

BELLEVILLE AUTOMOTIVE SUPPLY CO.

33 WASHINGTON AVE.

AUTOMOTIVE MACHINE SHOP

DUPONT PAINT

A.P. Mufflers & Pipes Delco Remy Ignition

Borg Warner Clutches New & Rebuilt Fuel Pumps

Rebuilt Clutches Carburetor Kits

Thermoid FHP Belts EIS Brake Parts

PL. 9-0400

Do you want a Perfect Christmas Tree delivered to your home for Christmas?

Christmas Farm Christmas trees are unusually high quality nursery grown trees. They have been grown from a specially developed variety of the aristocratic Scotch pine. This variety has a particularly rich green color and pleasing shape and fullness. It will not lose its needles even after standing for several weeks in a hot dry room. Being cut and delivered to your home fresh, these trees are less easily set on fire than the partially dried out trees found at the average lot.

Our supply of these special quality trees is very limited this year. To obtain one you must order now. Use the order form below to place your order today.

► ORDERING YOUR CHRISTMAS FARM CHRISTMAS TREE NOW SAVES YOU THE TIME AND BOTHER OF SHOPPING FOR A TREE DURING THE BUSY TIME JUST BEFORE CHRISTMAS.

► OUR DECEMBER DELIVERY SERVICE SAVES YOU THE MUSS AND FUSS OF BRINGING YOUR TREE HOME FROM A LOT.

► CHRISTMAS FARM CHRISTMAS TREES ARE FRESHER, MORE FIRE RESISTANT AND WILL NOT LOSE THEIR NEEDLES.

► CHRISTMAS FARM CHRISTMAS TREES HAVE PERFECT SHAPE, DENSITY AND COLOR.

► CHRISTMAS FARM CHRISTMAS TREES NEED FEWER ORNAMENTS AND LIGHTS FOR THAT DECORATED LOOK. THEY REQUIRE NO RAIN OR ICICLES TO HIDE HOLES AND OPEN DENSITY.

► SATISFACTION GUARANTEED. IF YOU ARE NOT COMPLETELY SATISFIED WITH YOUR TREE WHEN IT IS DELIVERED YOU MAY SIMPLY REFUSE TO ACCEPT DELIVERY WITHOUT OBLIGATION ON YOUR PART.

86 UNION AVE., NUTLEY, N. J. • North 7-0555

Please deliver the following Christmas tree(s) and white pine boughs to the address shown below:

— 3 ft. tree(s) @ \$4.50	— 7 ft. tree(s) @ \$ 8.50
— 4 ft. tree(s) @ \$5.50	— 8 ft. tree(s) @ \$10.50
— 5 ft. tree(s) @ \$6.50	— 9 ft. tree(s) @ \$12.50
— 6 ft. tree(s) @ \$7.50	— 10 ft. tree(s) @ \$14.50

(Note: tree height accuracy—plus or minus 6 inches)

Large bundle(s) (4 lbs.) white pine boughs @ \$1.00. (Sufficient fragrant, slender stemmed, long needed boughs to tastefully decorate the average room.)

Bale(s) (25 lbs.) white pine boughs @ \$4.50.

☐ Ship C.O.D.

☐ Send remittance in full with your order and receive free of charge one large bundle (4 lbs.) of white pine boughs with each tree. Satisfaction guaranteed or money refunded.

Name

Street Address

Apt. No. Town or City

*Delivery only to communities in or adjoining Essex County, N. J.

Christmas Farm

Large bundle(s) (4 lbs.) white pine boughs @ \$1.00. (Sufficient fragrant, slender stemmed, long needed boughs to tastefully decorate the average room.)

Bale(s) (25 lbs.) white pine boughs @ \$4.50.

☐ Ship C.O.D.

☐ Send remittance in full with your order and receive free of charge one large bundle (4 lbs.) of white pine boughs with each tree. Satisfaction guaranteed or money refunded.

Name

Street Address

Apt. No. Town or City

*Delivery only to communities in or adjoining Essex County, N. J.

Thanksgiving 1621

Four wild turkeys were served at the first Thanksgiving feast as the Pilgrims joined with their new-found neighbors in celebrating a good harvest after a winter of great starvation and privation - -

and 1960 . . .

Our Thanksgiving comes at a time of unprecedented abundance. Yet, will it be as meaningful as that first Thanksgiving? Yes — if we fill our hearts with thankfulness for the privilege of working — and saving — for even brighter tomorrows.

DeWITT Savings

And LOAN ASSOCIATION

463 Washington Ave., Belleville, N. J. PL. 9-5264